

# INTERNATIONAL SERVICES NEWSLETTER

Fall Semester, 2005

## INTERNATIONAL STUDENT BANQUET

The Annual International Student Banquet “United in Mission & Vision” was held in the university Student Center on Friday, November 4. As always, the room was packed and everyone had a great time. Entertainment was provided by the Japanese Student Association.

Award winners this year were:

### **Outstanding Scholastic Achievement:**

Undergraduate Female:

Ai Katagiri

Undergraduate Male:

Javier Perez

Graduate Female:

Archana Aluka

Eun-Jeong Han

Graduate Male:

Izhar Saeed

Nutan Prasain

### **International Athlete Award:**

Female:

Kristin Bachman

Male:

Akena Stephens Larubi

### **Spirit Award:**

Elipio Pereira De Andrade

### **Best Faculty Member**

Dr. Surendra Baliga  
Pediatrics

### **Best Staff Member**

Randolph Hunter  
Student Center

### **Outstanding Organization:**

Japanese Student Association

### **Outstanding International**

#### **Student Award:**

Vikram Siddamsetty

### **Outstanding Service Award:**

Christopher Reihsmann

### **President’s Award:**

Christopher Reihsmann

Kathy Tran

### **Emcees:**

Mahnaz Baghaei

Donny Kakati

Banquet photos can be ordered at  
[www.partypics.com](http://www.partypics.com).

Password: USAINTSTU

Order Deadline: December 10



## SPRING 2005 PRESIDENT’S LIST

Yukiko Akiyama

Angela Ang

Nicole Baab

Kim Courchesne

Sanaa Elkhattabi

Eri Fukuda

Shilpa Gadde

Subin Hada

Manami Hatanaka

Masaru Hirashita

Ren Haur Huan

Sudha Joga

Habtekiros Kahssay

Sushil Karki

Erin Kinnear

Yutaka Kunisato

Chiemi Kurebayashi

Ayaka Matsushita

Thorsten Meffert

Anna Miyatsuka

Ana Montes Ulldemolins

Maria Morales Davaus

Kibo Nakano

Dominika Nemcovicova

Piyush Neupane

Nhan Ngo

Mihoko Noguchi  
Tsubomi Odashima  
Chihiro Oishi  
Shun Okada  
Katarina Palenikova  
Javier Perez  
Kumaresan Raman  
Ali Rbaibi  
Robbert Reddering  
Sabrina Rigo  
Julio Ruiz  
Mariano Ruiz  
Minami Sato  
Christian Schmitt  
Emiko Shimazaki  
Netain Shrestha  
Ayano Sugiyama  
Marcela Vernaza  
Zheng Wang  
Sayaka Yoshii

## **SPRING 2005 DEAN'S LIST**

Elin Andersson  
Kayedion Andrews  
Kharen-Dawn Andrews  
Sahand Ayoobzadeh Shirazi  
Kristin Bachman  
Znar Barwary  
Tania Bayne  
Veronika Bobakova  
Alberto Campos-Rivera  
Alberto Chavez  
Carlos Diaz  
Tam Do  
Dias Doskarayev  
Christophe Dumeet  
Jennifer Edgar  
Wasim Farooque  
Saori Fueta  
Takuya Fujihara  
Yu Fukasawa  
Shenoda Gadalla  
Lusine Gasparyan  
Yuko Hatanaka  
Andres Hernandez  
Yuta Hosoya  
Iraj Hossain  
Xiaofei Hu  
Tomoyuki Inaba  
Makiko Inamura  
Chiharu Iwama

Kohei Kanki  
Ai Katagiri  
Miau Liang Khor  
Megumi Kimura  
John Kimwele  
Risa Koshiba  
Andrea Kurekova  
Man Lam  
Louiza Lazarou  
Duyen Le  
Juan Loo  
Hon Lon Lum  
Shanti Maharjan  
Mizusa Masuda  
Jyotsna Mentreddi  
Tea Milicevic  
Ana Milicevic  
Hiromi Mori  
Regulo Moy  
James Muisyo  
Chu Guan Nah  
Thanuja Nakandala  
Yuko Okamoto  
Lay Ooi  
K M Masood Parvez  
Jose Pinto  
Ana Rupic  
Sumie Sakamoto  
Ahsan Saleem  
Partha Sarker  
Juraj Sekera  
Bakhtiar Shirani  
Prabindra Shrestha  
Kok Hao Song  
Yuka Sugahara  
Akram Syed  
Yukie Takeda  
Nagisa Tetsuka  
Nagisa Tojo  
Michelle Toth  
Madhu Tummala  
Julian Varga  
Angela Villa  
Fabiola Villamizar  
Natalia Villamizar  
Be Nho Vo  
Thanh Vuong  
Sandhya Wilhelm  
Yong Keong Wong  
Lin Yang  
Maria Zivcicova

## **SUMMER 2005 PRESIDENT'S LIST**

Fuh Jong  
Thongsamai Manuthong

## **SUMMER 2004 DEAN'S LIST**

Josephine Davis  
Tam Do  
Patience Mbamba  
Mathew Mwathi  
Sugam Rijal  
Josephine Davis  
Tam Do  
Patience Mbamba  
Mathew Mwathi



## **MEDICAL INSURANCE REMINDERS**

All F-1 students at South Alabama must have health insurance. Our current policy is provided by HTH Worldwide. Go to their website at [www.hth.students.com](http://www.hth.students.com)

### **Please remember this:**

Do not use an Emergency Room for non-emergencies. The insurance will not pay 100% of charges for a non-emergency situation, even within the PPO. There is always a co-pay for hospital visits. Our own Student Health Services is your first and only cost-free choice for non-emergency illnesses.

There is a co-pay and you must pay up-front for prescription drugs. File the claim form for a refund after purchasing. Asking for generic drugs can save you money on that co-pay. Student Health is hoping to begin dispensing prescription drugs again soon.

If you did not receive a card or have questions, contact Kelley Lynd, Enrollment Services. (Admin Bldg 255, 460-6494). Being unaware of coverages and procedures can cost you extra money.

Students on OPT can purchase the student health insurance through Kelley. See her before the end of this semester if you are graduating in December and wish to buy it for Spring and Summer.



## **IMPORTANT IMMIGRATION NEWS**

Now, more than ever, it is important that all F-1 students be aware of and abide by all status requirements.

Do not let your I-20 expire!! It must be extended before the expiration date or it will be automatically cancelled by the SEVIS system. It is YOUR responsibility to be aware of passport and I-20 expiration

dates. Suspension or dismissal from the University does not allow you to apply for an extension. Passports should be renewed six months before expiration as processing time can be several months.

You must register as a full-time student no matter what. The only exception is a well-documented medical condition or graduation during that semester. If graduating, you must notify us when taking less than a full course load at the beginning of your final semester. If you are not a full-time student and do not meet the reasons above, you will be reported to INS as out of status.

Failure to officially drop the course with the university will result in an F on your transcript.

Under the new regulations, anyone out of status for more than 5 months is not allowed to apply for reinstatement with INS. Thus, your only option would be to return to your home country.

If you are out of status, our office will not be able to provide you with a good-standing letter for any reason.

Unless you have compelling reasons or a documented medical problem, we are very limited in extending your I-20. Suspension or dismissal from the University does not allow you to apply for an extension.

If you are transferring to another school, notify our office for the proper transfer. We do not transfer your SEVIS record until you are 100% sure you want to stay there.

If you are going home and sitting out a semester, you are not to re-enter the United States more than 30 days prior to the start of the next term. Re-entering before this time jeopardizes your immigration status.

New students trying to enter the U.S. more than 30 days before the start of their I-20 will be returned home and their visas cancelled. Do not let this happen to any of your friends who will be joining us.

If you are visiting a country other than your own, you may need to obtain a visitor's visa. Most Embassies have special web pages regarding current visa requirements and forms.

Let the Office of International Services know when traveling outside the US to verify your documents and sign your I-20 for travel.

Anyone formerly required to attend Special Registration must still leave the U.S. at the designated airports and have their departure documented. It is not enough just to surrender your I-94 card. Failure to follow the procedures will keep you from being allowed back into the U.S. It has happened to some of our students already--don't let it happen to you too.

If you are traveling inside the U.S., keep your passport, I-20 and I-94 with you. Any officer of the law can ask for your immigration documents. If you have a car, it's a good idea to keep a copy of your passport/I-20/I-94 in the glove box with your insurance and car registration.

If you move, please notify us of your new address within 10 days so we may report the change.

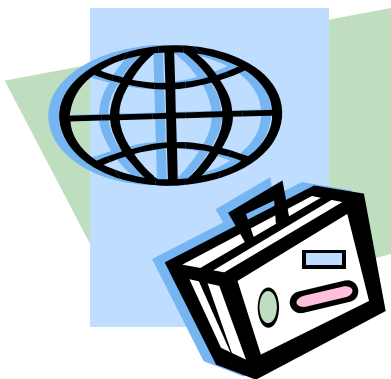
These are very difficult times and as always we are working to assist you in all ways possible.

## ATTENTION GRADUATE FEMALES

The P.E.O. Sisterhood is an international organization with interests in furthering educational opportunities for women.

They are offering the P.E.O International Peace Scholarship Fund of up to \$8000 annually for women in graduate studies.

Stop by our office for information or go directly to their web site at [www.peointernational.org](http://www.peointernational.org). Deadline is December 15 for this year.



## ARRIVAL ASSISTANCE

It's that time again....we need your help in the arrival of new students. With snow storms delaying flights and holiday closings everywhere, your help is most important.

Please let Cindy in our office know if you will be in town over the holidays and are willing to help out with new students.

## CRICKET TOURNAMENT

The C.I.S.O. will be holding the annual Cricket Tournament during the Thanksgiving holidays at the new intramural fields.

For more information:

<http://www.southalabama.edu/intnatsrv/news.htm>

## EMPLOYMENT AUTHORIZATION

USCIS must receive your OPT application before graduation or your OPT will be denied. The official date of graduation for Fall is December 19.

When you apply, you will select a start date which can be as late as 60 days after graduation. So apply early, even if you want it to start late.

Traveling while on your practical training is risky. There is no guarantee that you will be allowed back into the U.S.

You cannot postpone your graduation to delay applying for your OPT. You must apply when you finish your coursework even if the job market is low. Graduate students may complete Thesis or COMPS while on OPT and should also apply upon the completion of coursework.

You may receive an additional year of OPT each time you proceed to a higher degree. This means one year upon completion of bachelors and another year upon completion of masters or masters to doctoral degrees.

If you begin a new program while on your Optional Practical Training, the remaining time on your EAD is cancelled.

In order to be approved for Curricular Practical Training (CPT), you must register for an internship. See us regarding CPT approval, even if it is in the middle of a semester.



## NEED A RIDE???

Baptist Campus Ministries is still running their regular ride assistance to Wal-Mart on Thursdays. This service has become so popular that they have enlisted the help of Friends of Internationals. Pick-up is at 4:15 p.m. at the Compass ATM outside the Student Center.

Call their office 344-5904 for more information regarding the scheduled times



## PHI BETA DELTA HONOR SOCIETY

Phi Beta Delta is an international honor society dedicated to the recognition of achievement in international education. Founded in 1986 at California State University, our own Delta Eta Chapter was founded in 1997.

We are pleased to announce the new Phi Beta Delta members inducted at the International Banquet on November 4th:

Archana Aluka, Graduate  
Electrical Engineering  
Nadia Bood, Graduate  
Marine Sciences  
Shu Kae Chin, Graduate  
Mechanical Engineering  
Sang Min Hong, Graduate  
Mechanical Engineering  
Man Ho Lam, Undergraduate  
Civil Engineering  
Alexandria Lewis, Undergraduate  
Clinical Laboratory Sciences  
Guoshun Li, Graduate  
Business Administration  
Washington Makau, Undergrad  
Biomedical Sciences  
Osama Malik, Graduate  
Business Administration  
Adriana Murayama, Undergrad  
International Marketing  
Chu Guan Nah, Undergraduate  
Mechanical Engineering

Ali Rbaibi, Undergraduate  
Information Sciences  
Assad Siddiqui, Graduate  
Information Sciences

To qualify for membership students must be junior, senior or graduate with minimum 3.5 gpa and have attended USA for at least one academic year.

Faculty or staff must have demonstrated interest and involvement in international scholarly activities. American students who study abroad and are involved in international activities may also be eligible.

If you are interested in joining Phi Beta Delta please contact Heather Goins in our office.

## GREEN CARD LOTTERY

You can get information on the DV Lottery at the official State Department lottery web site at [http://travel.state.gov/visa/immigrants/types/types\\_1318.html](http://travel.state.gov/visa/immigrants/types/types_1318.html)  
Other information is available at <http://uscis.gov/graphics/howdoi/divlott.htm>

Don't forget to pay attention to the deadlines and new nationalities restrictions.

Watch out for bogus companies and web sites promising green cards. E-mails telling you to send money to increase your chances of winning are scams. Do NOT fall victim to such schemes.

There is never a fee for entering the DV Lottery and all entry is done electronically

## CHRISTMAS INTERNATIONAL HOUSE

Are you interested in spending part of your Christmas holiday with an American host family in another city?

Come by the International Services Office or get info at [www.ChristmasIH.org](http://www.ChristmasIH.org) Deadline for applications: Dec 1, 2005

If you are interested in spending time with a local American host family, contact Jim & Mary Mather with Friends of Internationals at 344-4756

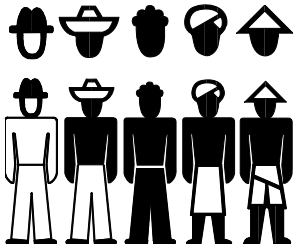
*Happy  
Holidays*

## UNIVERSITY HOLIDAY CLOSINGS

The Office of International Services and entire university will be closed for Thanksgiving Holidays from Noon Wednesday, Nov 24 to Monday, Nov 29.

Christmas holiday closing will be from Dec 23 until Jan 3rd. Have a safe and happy holidays.

If you would be willing to help with new students over the holidays please see Cindy Nobles. Your help is greatly needed and appreciated, especially with so few places open for the new students over the holidays.



## C.I.S.O. HAPPENINGS

C.I.S.O. stands for Council of International Student Organizations, one of the largest student organizations on campus. This year's officers are:

President: Elipio Pereira  
Vice President: Philip Lagat  
Secretary: Molly Del Santo  
Treasurer: Mohamed Kamal

CISO Meetings are open to everyone, whether participating on behalf of a student organization or individually. They are held each Tuesday at 4:30 p.m. in the CISO Office.

CISO events held this semester already include a Welcome Party on September 2, the Banquet on Nov. 4, and a Soccer competition on Nov. 12. Congratulations to the Soccer Tournament winners, Japanese Student Organization

CISO sponsors Student Discount Cards available in International Services.

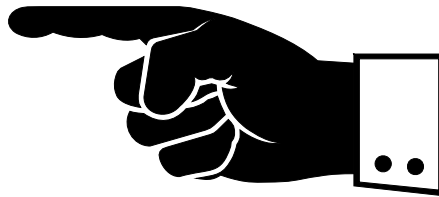
Check out the CISO web site at [www.southalabama.edu/ciso](http://www.southalabama.edu/ciso)

Check your Jaguar1 email account for CISO events as well as important university notices.

## STUDENT HAPPENINGS

Many of our international student organizations have been very active in contributing money, time and effort into relief efforts for hurricane victims and earthquake victims. We know many of you are still working actively with these relief efforts.

We want to share your projects and stories. Please write up a brief statement of your organization's activities so we can report them all.



## OTHER POINTS OF INTEREST

By now everyone knows that F-1 students are no longer eligible for Social Security cards until they already have an on-campus job, a graduate assistantship, or CPT/OPT work authorization.

If you get one and are eligible to apply, see our office. You will need a letter from your on-campus employer as well as a letter from International Services.

You are also required to actually be working before you are eligible. Therefore, do not ask offices to merely offer you employment so you can get a

social security card. We realize students often want social security cards in order to obtain credit cards, but that is not what the numbers are for—they are only for employers to withhold taxes from wages.

Also, if you are lucky enough to be offered an on-campus job, you need be courteous and responsible enough to fulfill your obligations. We know you want that office to be glad they hired an international student. And we want our campus offices to continue their practice of hiring international students in the future.

Each of you should be checking your Jaguar1 e-mail address on a regular basis. Important correspondence from our office as well as other university offices is sent to this account.

## NEW STUDENT ORGANIZATION

Congratulations to our newest student organization—the Turkish Student. We know everyone will want to give them support and encouragement in all of their projects.

Officers are:

M. Serkan Ozkan, President  
M. Can Kisacikoglu, Vice Pres  
O. Caglar Onar, Secretary  
Zekeriya Boz, Treasurer

You can look for these guys to be active in all the CISO events as well as events sponsored by the Intercultural Student Association. Check out their web site at <http://www.usouthal.edu/turkey/index.htm>

## **ATTENTION ALUMNI**

We now have an Alumni Database on our office web page. And we want to hear from you!!

<http://www.southalabama.edu/intnatsrv/alum.htm>

## **EXCITING NEWS**

By the time of our next newsletter, the Office of International Services should be in our new location on campus.

We will be moving to the new Student Services Building across from the Student Center when it opens in Spring. We are all very excited about this move!

## **SPRING REGISTRATION AND TUITION PAYMENT POLICY**

Spring semester registration is going on now!! Check your PAWS registration for your

assigned time. The earlier you register, the better your selection of classes.

Be aware also of the Spring tuition payment policy. You must pay 50% of your tuition and fees by December 13 in order to hold your classes and to defer the balance of your account until January 11. For full details, see the Bursar web page at <http://www.southalabama.edu/financialpolicies.html>