

STUDENT DOCUMENTATION

Introduction

The Experiment Management System provides an easy method for you to sign up for experiments, and track your progress through the term. Everything is done through the software's web-based interface, so you can access the system at any time, from any computer, with a standard web browser.

The web address for access to our system is

<http://usapsychology.sona-systems.com>

You can get access from the Psychology department computer lab, in LSCB Room 241m whenever a regular class is not in session, or from ANY computer with internet access and a current browser.

It should be noted that this documentation covers all the features in the system, USA has chosen to disable certain features. Do not be alarmed if the documentation covers options and features that are not visible on the system you are using.

Getting Started

Your interaction with the system will be minimal and hopefully as painless as possible. After you log in to the system, you can view a list of available experiments and any restrictions, sign up for experiments that interest you, and track your progress throughout the semester. The system will track when you receive credits for an experiment, so you can view this online as well.

The system works best if you use a web browser that is less than 2 years old. It works well with Internet Explorer version 4 and above, and Netscape version 4 and above. It will work with other web browsers, and with older version of Internet Explorer and Netscape, however the layout may not be as clean. No functionality will be lost by using an older web browser. This documentation assumes you have a basic knowledge of how to use the web. On this system, it is not necessary to use the Back button. You can always use the toolbar on the top of every screen to navigate anywhere on the site.

Requesting an Account

It is very important that you fill in your email address under the “alternate email address field.”

You will see a link on the front page of the site to request an account. Click the link, and you will be required to provide some very basic information. It is critical to give your primary email account address, because you will receive an email notification immediately with your login information. The email notification will include login instructions for the system. You will be assigned a default password, which you can change after your first login. In many cases, you may also provide an alternate email address (after your first login) if you prefer to receive future notifications at another email address. **YOU WILL RECEIVE NO JUNK EMAILS AS A RESULT OF SIGNING UP WITH THIS WEBSITE!**

Request an Account - Microsoft Internet Explorer

File Edit View Favorites Tools Help

Back Forward Stop Refresh Home Search Favorites Media Mail

University Psychology Department

experiment management system

Request an Account

Using this form, you may request an account on the system. After the administrator approves the account, you will receive an email with the login information. You will only be identified to researchers with a unique numeric code that the system will assign, not by your name.

Fields marked with a (+) below are optional.

Account Information

First Name

Last Name

User ID @yourschool.edu

Student ID Number (+)

Phone (+)

Course(s)
85102B
85102C
(hold the Ctrl key and click for multiple courses)

Request Account

Figure 1 - Requesting an Account

Logging In

Once you have your login information, go to the front page of the site and enter your user ID and password to login.

Again, the web address for access to our system is <http://usapsychology.sona-systems.com>

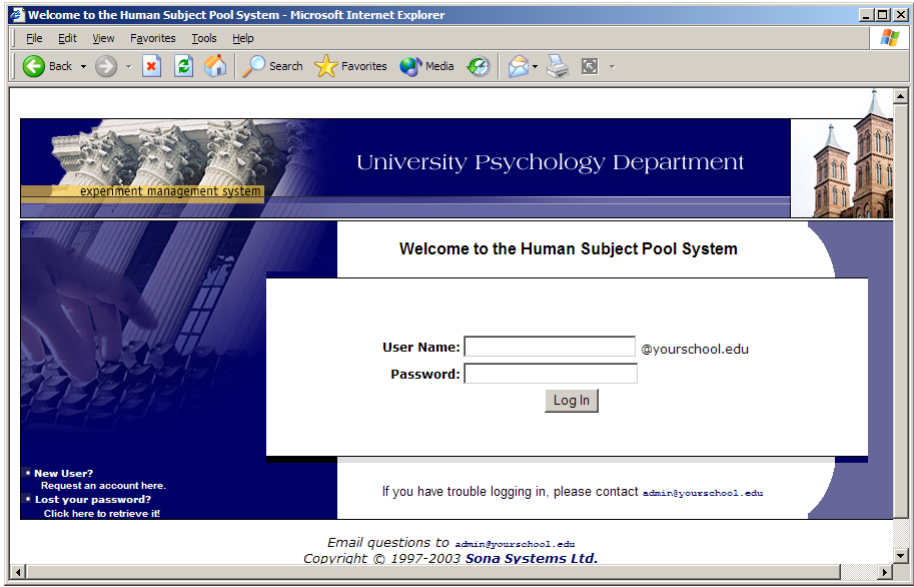


Figure 2 - Login Page

Once you login, you may be asked to review and acknowledge your organization’s human subject policy for research. You will need to acknowledge this only once every 6 months. You will also be asked to participate in a pretest. After you complete these tasks, you will see the Main Menu.

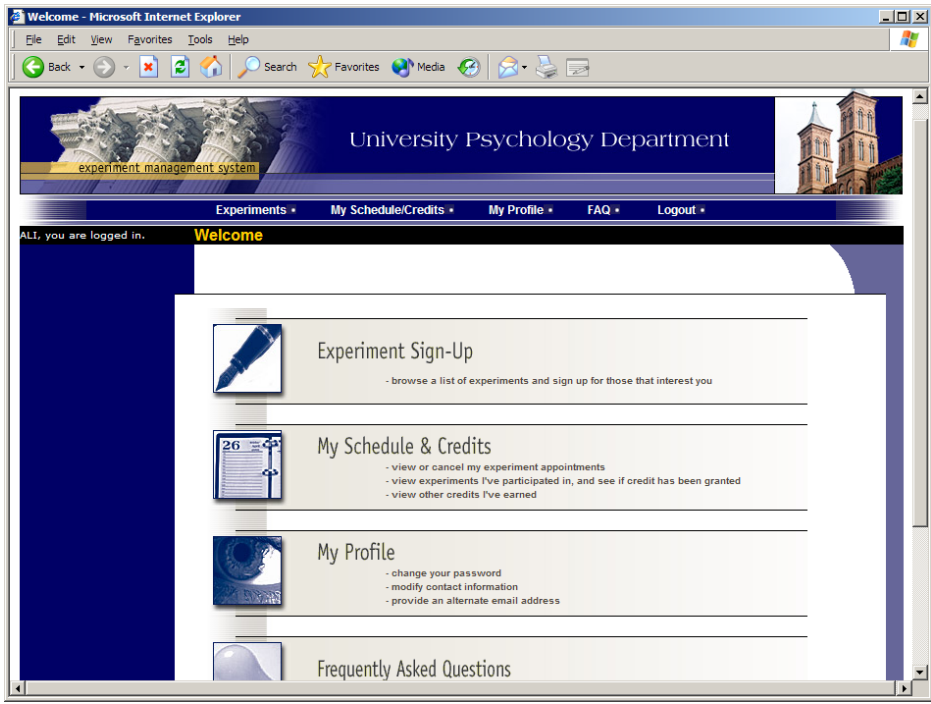


Figure 3 - Main Menu

Your login (also known as a session) will expire after a certain period of inactivity, usually 20-60 minutes. This is done for security purposes. If this happens, you can always log in again. When you are done using the system, it is better to explicitly log out, to

prevent any problems that may arise if someone uses your computer before the session expires. This is especially important if you are using a public computer lab.

Retrieving a Lost Password

If you have forgotten or do not have your password, and the feature is enabled on the system, then you may choose to have your password emailed to you. You will see an option on the front login page if this feature is enabled. Your password will be emailed after you submit the form, and should arrive in your email box momentarily. If you provided an alternate email address (see the Email Address Options section of this documentation), it will be sent there. Otherwise, it will be sent to your main email address, which is derived from your user ID.

Logging Out

When you are done using the system, choose Log Out from the toolbar on the left side to log out. You are now logged out. It is always a good security measure to close all your browser windows as well, especially if you are using a computer that is shared by others.

Changing Your Password and Other Information

If you would like to change your password or other information about yourself, choose My Profile from the top toolbar. If you would like to change your password, type your new password (twice, for confirmation) in the provided boxes. If you would *not* like to change your password, simply leave these boxes empty.

Fields marked with a (+) are optional.

My Profile

Name ALI ATALIK

Identity Code 28825
(Experimenters will see only this code, and never your name)

User ID aatalik@yourschool.edu

New Password
Enter twice, or leave blank if you do not want to change your password.

Student ID # 999000907

Phone Number (+)

Alternate Email Address (+)
If provided, all emails sent to you from the system will be sent to this address.

Credits Earned 0

Credits Required 3

Course(s) • 85102N

Pretest Status Completed

Figure 4 - Updating Your Profile

Email Address

It is very important that you fill in your email address under the “alternate email address field.”

There are certain events in the system which will cause an email notification to be sent to you. Most often, these are notifications that you have received credit for an experiment, or a confirmation that you have signed up for an experiment. Your email address is also displayed to the experimenter when they view who has signed up for their experiment, in the event they need to contact you.

Unique ID Codes

If enabled, the system will automatically assign a unique, numeric ID code to you. You should continue to use your normal login ID to log in to the system. The purpose of the ID code is to identify you to researchers in a way that does not reveal your identity or compromise your privacy. If this feature is enabled, you will see this ID code when you view the Human Subjects Policy, when you update your profile, and in email confirmations and reminders about your upcoming experiment sessions. You should bring this ID code with you when you go to experiments or when communicating with experimenters, as they know you only by your ID code, and not your name.

Experiments

With the system, you may view experiments and sign up for those that interest you and where you meet any special requirements. You may cancel your sign-up through the system as well.

You may see some experiments that are online experiments. You should read the details of these experiments closely, but generally you may participate in them online. It is usually assumed you will participate in the experiment shortly after you sign up for it, though you have until the Participation Deadline Date to participate.

Viewing Experiments

To view a list of experiments, click on Experiments from top toolbar. You will see a list of experiments. A brief description of each experiment will be listed, as well as any special requirements that may restrict your eligibility to participate in the experiment.

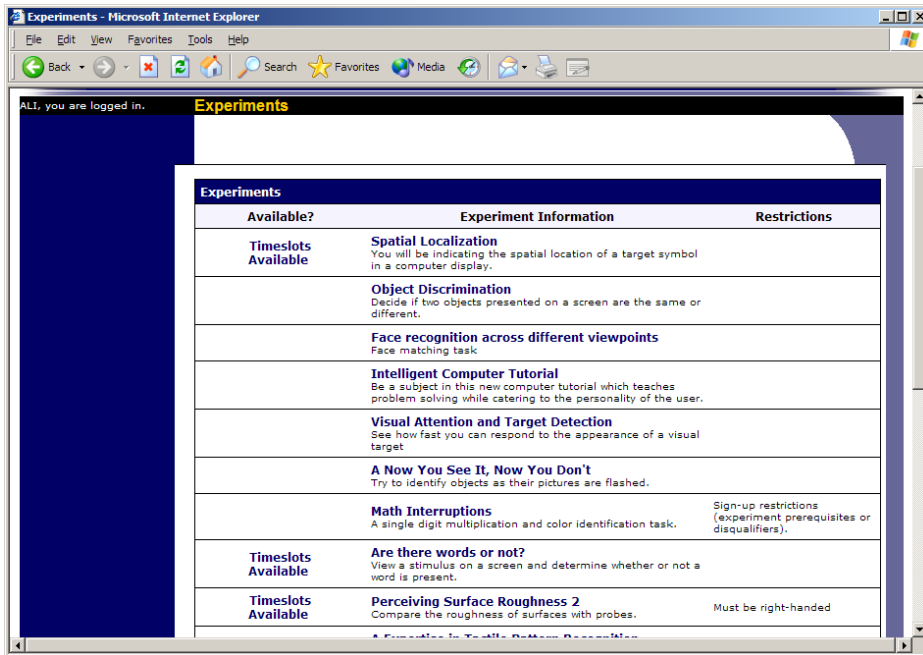


Figure 5 - Viewing Experiments

Experiments that currently have available participation times (timeslots) will have “TIMESLOTS AVAILABLE” listed next to the name of the experiment. If no experiments have available timeslots, you may want to logon to the system a few days later to see if new timeslots have been added.

To view more information about an experiment, click on the name of the experiment.

Signing Up For Experiments

To sign up to participate in an experiment, find the experiment you would like to participate in (see Viewing Experiments in this documentation). Click on the experiment name for more information. You will see a list of any special restrictions or eligibility requirements, as well as a contact person if you have questions about the experiment.

Some restrictions are automatically enforced by the system. If the experiment has certain pre-requisites or disqualifiers (experiments you must *not* have participated in to participate in this experiment), those will be listed, as well as a note about whether you meet those eligibility requirements.

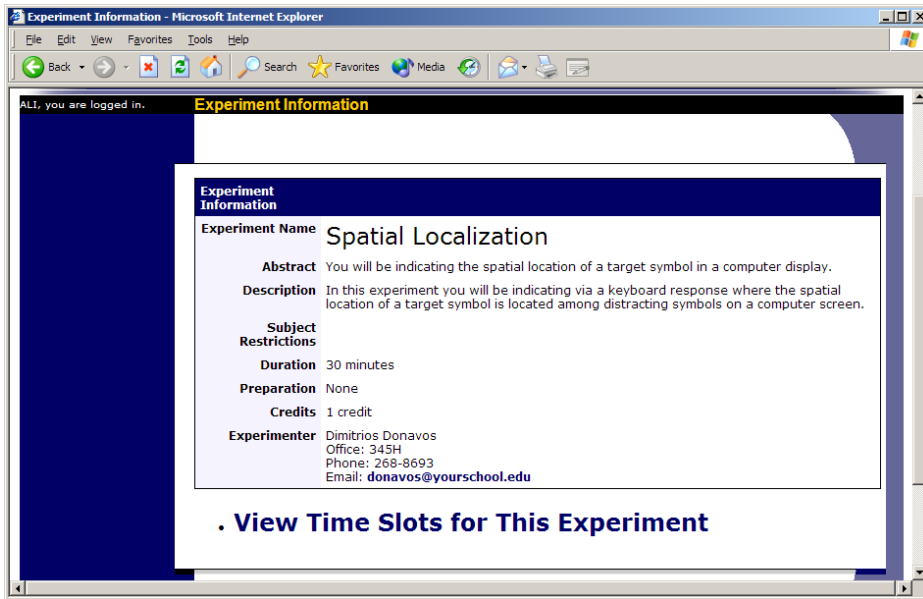


Figure 6 - Experiment Information

The experiment may have other restrictions listed as Subject Restrictions. An example of a Subject Restriction is “Left-handed people only.” If listed, then the system does *not* enforce this restriction, but you should only sign up for the experiment if you meet this restriction. If you sign up for the experiment and you do not meet the restrictions, you will likely not receive credit for the experiment, and could face a penalty.

Some experiments require a special password to sign up. If this is the case, it will be noted. The experimenter should have given you this special password. It is *not* the same as the password you use to login to the system. You will need to enter the special sign-up password just before you click the Sign Up button to sign up for a timeslot.

You may only sign up for a timeslot up until a certain time before that timeslot is scheduled to occur. The system will not show a Sign Up button for timeslots where it is too late to sign up.

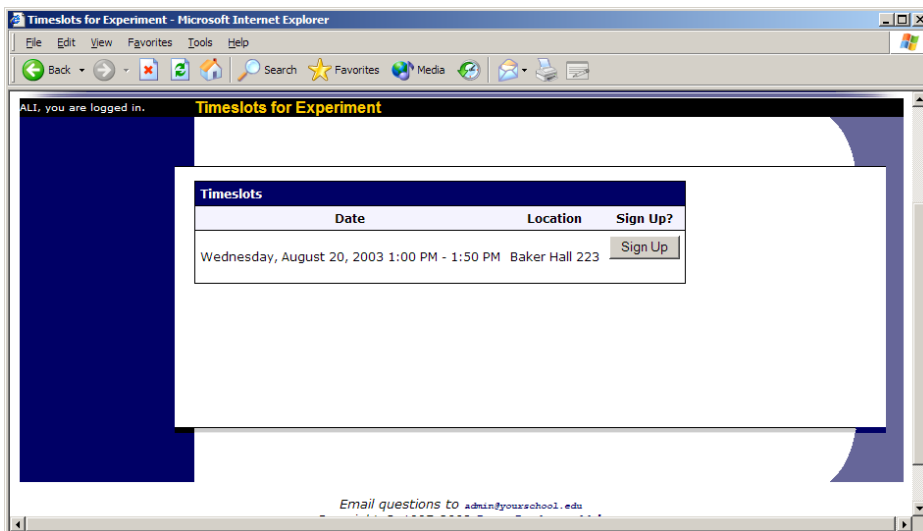


Figure 7 - Experiment Timeslots

Once you have determined you meet all the requirements, click on View Timeslots for This Experiment and you will see a list of available timeslots. Choose a timeslot that is convenient for you, and click Sign Up.

After you click Sign Up, you will see information displayed confirming the time and location of the experiment you plan to participate in. You may receive an email confirmation as well, depending on how your system is configured. You are now signed up for the experiment. To cancel your sign-up, see Canceling a Sign-Up in this documentation.

Canceling a Sign-Up

If you need to cancel a timeslot you have signed up for, you can do this from the My Schedule and Credits page. Choose the My Schedule/Credits option from top toolbar.

You will see listed all the experiments you have signed up for, as well as those you have completed (see the Tracking Your Progress section of this documentation for more information).

Experiments you have signed up for that you are allowed to cancel will have a Cancel button next to them. There is a time limit before the experiment is to occur, when it is too late to cancel. This restriction is listed at the bottom of the page.

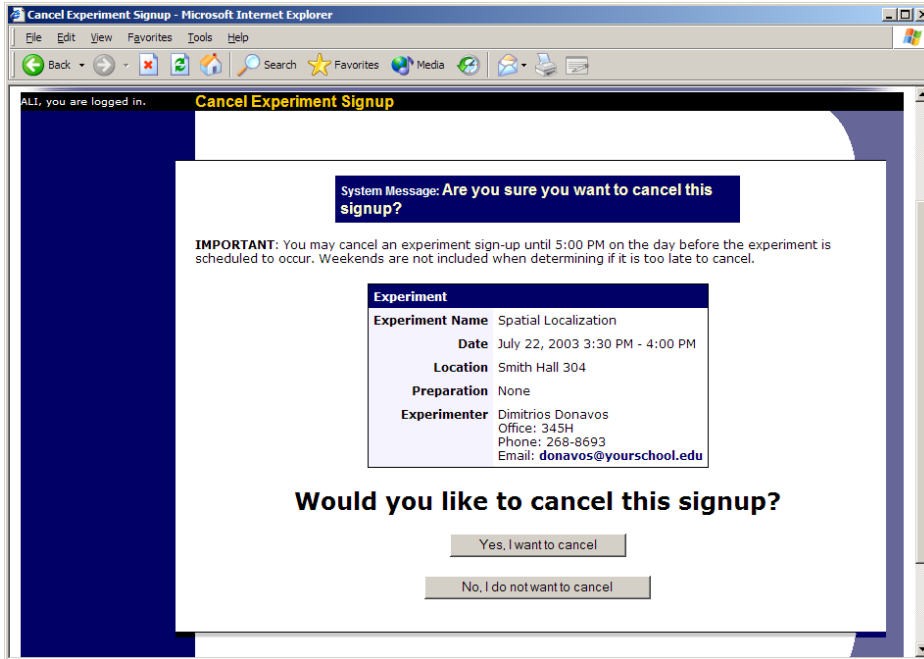


Figure 8 - Sign-Up Cancellation

Once you click Cancel to cancel your sign-up, you will see a confirmation page. You will also be warned if your cancellation might affect your ability to participate in other experiments you have signed up for, due to pre-requisite restrictions. If the cancellation will affect your ability to participate in another experiment you are signed up for, it is *your* responsibility to deal with this issue (usually by canceling the depending experiment as well). The system will warn you, but will not block the cancellation.

Click Yes to cancel your sign-up, and the sign-up will be cancelled.

Tracking Your Progress

You may track your progress at any time by choosing the My Schedule/Credits option from the top toolbar.

When you view this page, you will see at the top a list of the number of credits you are required to earn, and how many you have earned so far. Below that, if you have signed up for any experiments, those are listed as well. In the list of experiments, you will see information about your credit status.

Credit Information
You have earned 2 credits out of the 4 credits you must earn.

Experiment Sign-Ups
NOTE: Researchers only know you by your identity code, which is 28804, so please use that when corresponding with them.

Experiment	Time	Location	Credit Status	Course	Comments	Cancel?
A Now You See It, Now You Don't (1 Credit)	January 21, 1999 10:00 AM - 10:15 AM	329A Baker Hall	Awaiting action from experimenter.	85221		
A Can You Handle It? Grasping and Lifting Smooth to Slippery Objects (1 Credit)	January 26, 1999 3:45 PM - 4:30 PM	342 C Baker Hall	Failure to appear (1 credit penalty).	None		
Math Interruptions (1 Credit)	January 28, 1999 11:30 AM - 11:48 AM	Baker Hall 345M	Awaiting action from experimenter.	None		
Object Perception (1 Credit)	December 30, 2002 1:00 PM - 1:30 PM	BH233	Awaiting action from experimenter.	None		
Quick Web Experiment (1 Credit)	January 31, 2003 1:00 PM (Participation)	Online	Awaiting action from .	85221	dd	

Figure 9 - Viewing Your Progress

If you failed to appear for an experiment, it is possible you were assessed a penalty. That will be displayed in your progress, and the penalty (if assessed) will increase the number of credits you must earn. You can also see any comments the experimenter left regarding the experiment and your credit for it.

Non-experiment credit is also listed, when applicable. Non-experiment credit is usually granted for writing a paper or some other special situation.

Reassigning Credits

If you belong to multiple courses, and the system is configured to allow it, you may reassign a credit from one course to another. To do this, simple use the Reassign link that appears when you view your progress. The link appears under the course entry for each item in your progress listing.

Online Pretests

If enabled on your system, you may be asked to take an online pretest before you use the system. Depending on how the pretest was configured, you may have the option to opt out of the entire pretest and/or individual questions. You should realize that declining to participate in the pretest or certain questions may affect your eligibility for some experiments, so participation is strongly encouraged.

In some cases, you may earn credit for participating in the pretest, and you may even earn credit if you decline to participate in the pretest. If either case holds true, the system will inform you of this before you commence the pretest.

The pretest may consist of multiple sections. All questions are either multiple-choice or fill-in (free-entry) answer, so it should be rather easy to complete. At the end of the

pretest, you will have a chance to review and change any of your responses. After you save all your responses, you may not take the pretest again, so answer the pretest carefully.

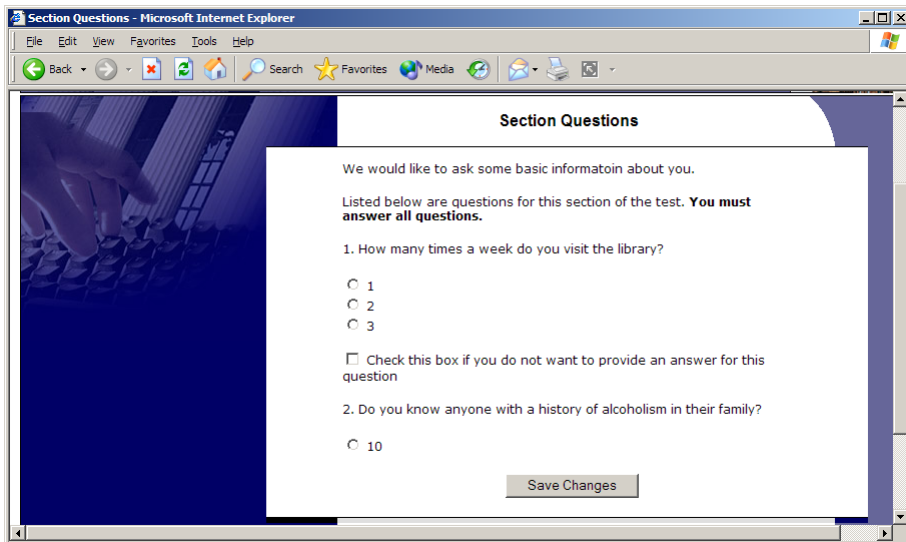


Figure 10 - Pretest Questions

Frequently Asked Questions

I participated in an experiment, but I have yet to receive credit. How do I receive credit?

The experimenter must grant you credit. This is usually done shortly after your participation. If it has been some time and you have still not received credit, contact the experimenter.

Who can see the information about my sign-ups? I don't want everyone to know which experiments I signed up for.

Only the experimenter and principal investigator of the experiment may see that you have signed up for it, along with the subject pool administrator. No other users, including other experimenters, may see this information.

How do I change the email address where email notifications from the system are sent?

Provide an Alternate Email address and notifications will be sent there. See the Email Address Options section of this documentation for more information.

I wrote a paper instead of participating in experiments. How do I know I have completed my requirements?

View the My Schedule and Credits page and any non-experiment credit will also be listed there. See the Tracking Your Progress section of this documentation for more information.

I noticed that with some experiments, I can sign up for them again even if I participated before, while others don't allow for this. Why is this?

Experimenters can choose if their experiments allow you to participate more than once. Not all experiments allow you to participate more than once.

I attempted to sign up for an experiment, and I was prevented from doing so because the experiment I was trying to sign up for is a disqualifier for another experiment I am scheduled to participate in. Why is this?

If you have signed up for an experiment that has disqualifiers (experiments you must *not* have participated in to participate in that experiment), you may not then sign up for the experiments that are listed as the disqualifier experiments. You *are* allowed to sign up for the disqualifier experiments if the disqualifier experiment will take place after the experiment with disqualifiers, or if you have already participated in (and received credit for) the experiment with disqualifiers. The easiest way to sign up for both experiments is to schedule the disqualifier experiment at a time later than the experiment with disqualifiers.