

Jazz Ensemble Audition Packet

-Auditionees for all instruments must play the posted etude in the appropriate key. -Rhythm section audition info is at the end of the packet.

-If the printed range of an etude is an issue, students are welcome to transpose or change octaves of certain pitches, please just let me know in your audition.

-All wind auditions will occur in Dr. VandeWaa's office room 1103 during the first class session of jazz ensemble. A sign-up sheet will be posted on Dr. VandeWaa's bulletin board.

-Rhythm section auditions will occur AFTER wind auditions and will be held in the rehearsal hall, room 1230.

-Any auditionee needing to audition before or after the scheduled course time must let Dr. VandeWaa know, preferably via e-mail.

-All students must register for the Jazz Ensemble course, MUO 121, 421, or 521. -Students should prepare 2 scales or modes of their choice, in addition to the printed etude for their instrument.

-Any questions can be sent directly to Dr. VandeWaa at his university e-mail: ajvandewaa@southalabama.edu

B-flat instruments

ROODY'N YOM

A-7b5 D7#9 G-7b5

C7#9 F-7b5 Bb7#9

2. Eb6 EbΔ7 (A-7b5)

Bb-7 Eb7 Bb-7 Eb7 Bb-7 A7

AbΔ7 C-7 F7 C-7 F7

C-7 B7 Bb7 A-7b5

D7#9 G-7b5 C7#9

F-7b5 Bb7#9 EbΔ7 F-7 EbΔ7 (AbΔ7)

"MILES PLAYS JAZZ CLASSICS"

E-flat Instruments (play top line only)

410. **WOODY' N YOU** DIZZY GILLESPIE

UP

Chords and notation in the score:

- System 1: E-7b5, A7#9, D-7b5, G7#9
- System 2: C-7b5, F7#9, Bbmaj7 C-7, G7/D Ebmaj7
- System 3: Bbmaj7 (Eb7b5)/D, F-7 Bb7, F-7 Bb7, F-7 E7
- System 4: Ebmaj7, G-7 C7, G-7 C7, G-7 Gb7
- System 5: F7, D.C. al Coda, Bbmaj7 C-7, Bbmaj7 (Ebmaj7)

FORM: AABA

"MILES PLAYS JAZZ CLASSICS"

DIZ - "HAVE TRUMPET, WILL EXCITE"

Bass Clef Instruments

450

(FAST BOB)

WOODYN' YOU

-DIZZY GILLESPIE

[A]

G-7b5

C7#9

F-7b5

Bb7#9



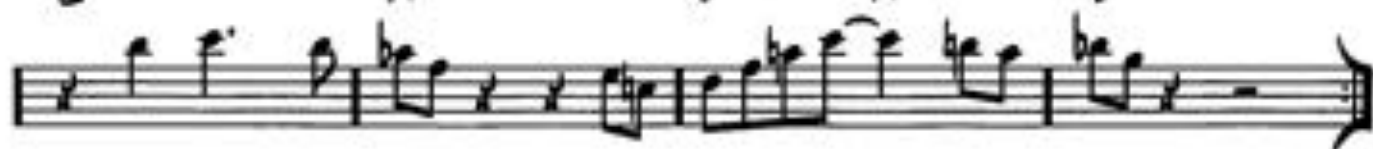
Eb-7b5

Ab7#9

Dbmaj7

Ab7

Db6



[B]

Ab-7

Db7

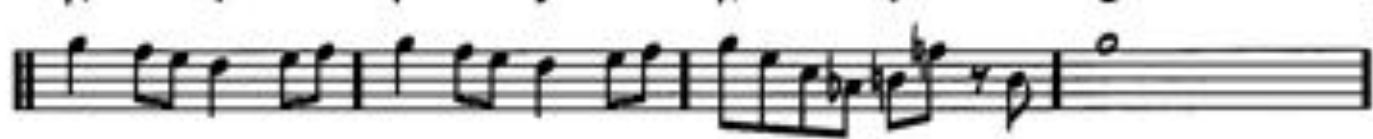
Ab-7

Db7

Ab-7

Db7

Gbmaj7



Bb-7

Eb7

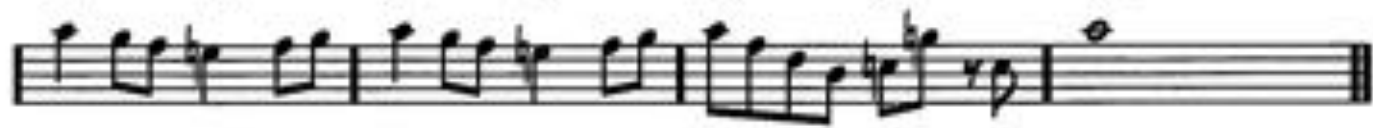
Bb-7

Eb7

Bb-7

Eb7

Abmaj7



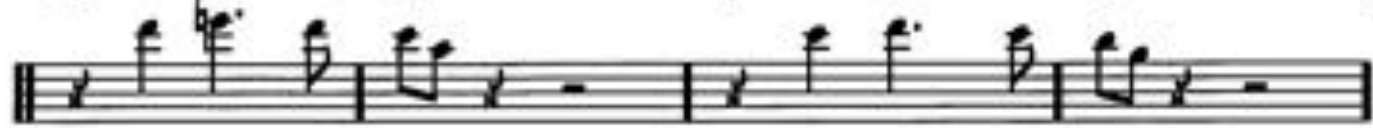
[A]

G-7b5

C7#9

F-7b5

Bb7#9



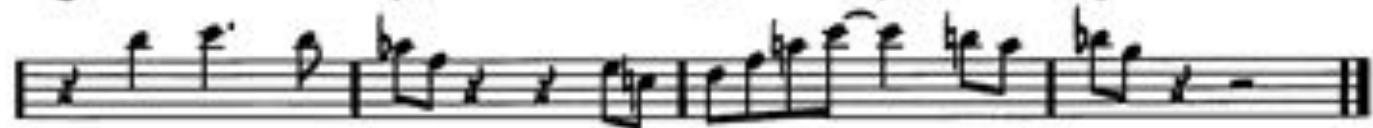
Eb-7b5

Ab7#9

Dbmaj7

Ab7

Db6



C-Instruments

470.

(V)

WOODY'N YOU

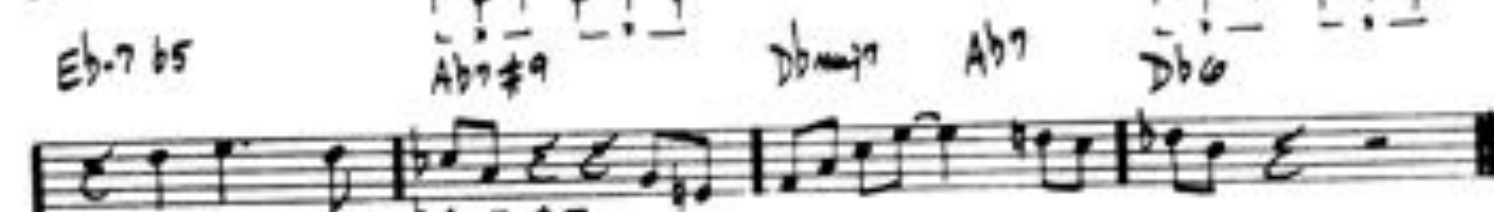
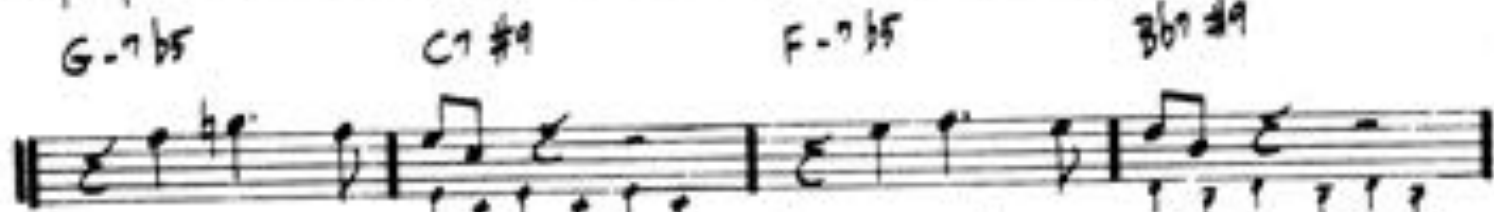
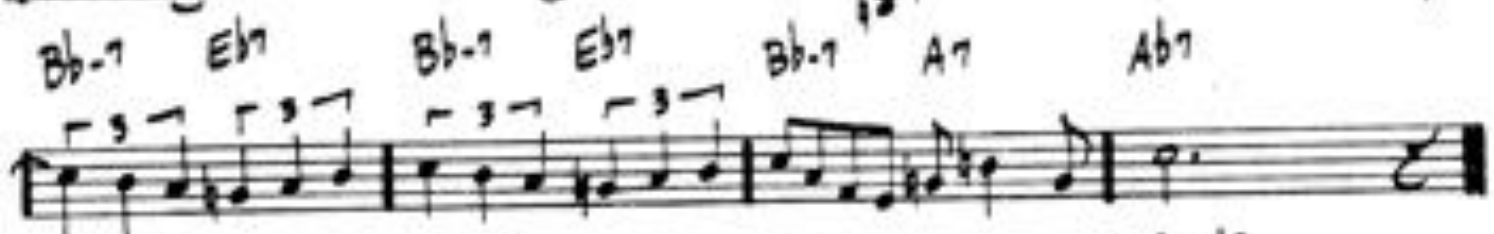
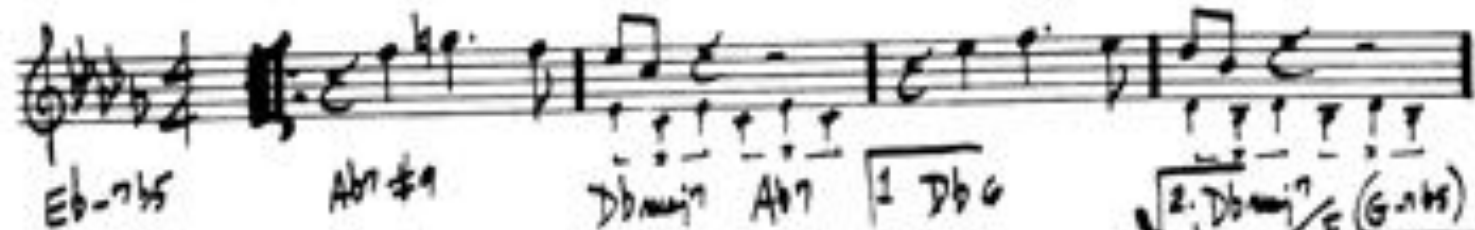
- DIZZY GILLESPIE

G-7 b5

C7 #9

F-7 b5

Bb7 #9



Rhythm Section Requirements

Piano/Guitar

- Play the melody of the Concert pitch etude, then comp the changes of the etude
- Improvisation over the changes may be asked as well

Bass

- Play the melody of the bass clef etude, then walk a bass line through the changes
- Walk a bass line through a 12-bar F, C, or B-flat blues form

Drum set

- Play through the following styles/forms:
 - A.Swing-Medium Tempo-use brushes (mm=120-132): 12 Measures
 - B.Swing-Fast Tempo (mm=210+): 24 Measures
 - C.Bossa Nova/Latin (mm=120-132): 24 Measures
 - D.Ballad-Slow-use brushes (mm=60-66) 12 Measures
 - E.Funk (mm=90-106): 16 Measures