



UNIVERSITY OF
SOUTH ALABAMA



WELCOME TO THE UNIVERSITY OF SOUTH ALABAMA



SOUTH IS A SPECIAL PLACE

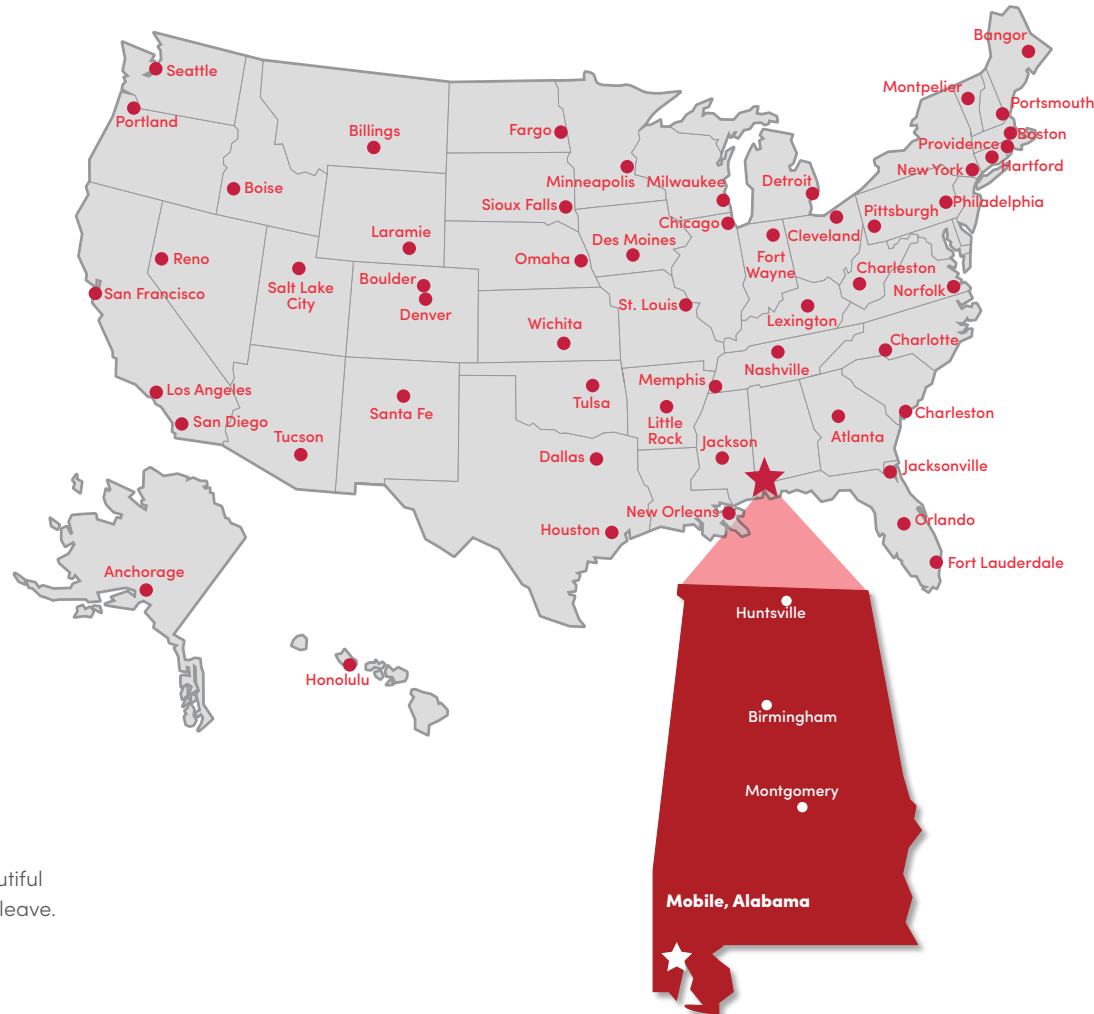
See what it's like to be part of the Jaguar family.





SOUTH STUDENTS

come from all 50 states and over 50 countries! We have a campus environment that fosters diverse experiences and meaningful relationships, which is why so many students have chosen to call South "home." You can get here from anywhere, and we encourage you to come see our vibrant community for yourself!



APPROXIMATE
TOTAL ENROLLMENT

13,463

AVERAGE ACT OF
ENTERING FRESHMEN

23.1

AVERAGE GPA OF
ENTERING FRESHMEN

3.75

AVERAGE
CLASS SIZE

19

NCAA DIVISION 1
SPORTS TEAMS

17

MAIN CAMPUS
ACREAGE

1,225

STUDENT TO
FACULTY RATIO

17:1

ANNUAL ECONOMIC
IMPACT

\$3 Billion

Seeing is believing. Come tour our beautiful campus, and you'll likely never want to leave.

**Go to SouthAlabama.edu/visit or call
(251) 341-3951 to schedule a tour.**

THESE ARE GENERAL ADMISSIONS STANDARDS

The University of South Alabama will occasionally admit students who do not meet these exact criteria. Students should apply for admission if their grades and scores are close to the standards.

Students under admissions requirements can provide additional information to be reviewed by an admissions committee. This is another great path for students with good grades. Test-optional students may be asked to provide additional materials, and test-optional admissions are based on performance, course selection, and other key academic factors.



APPLICATION PROCESS

1. APPLY ONLINE

SouthAlabama.edu/apply

2. SUBMIT TEST SCORES AND TRANSCRIPTS

Request an official transcript be sent to USA Office of Admissions. Request that your ACT or SAT scores be sent to USA.

3. NOTIFICATION OF ACCEPTANCE

You will be notified by email, or you can check your status on the admissions portal.

4. LOG INTO PAWS AND JAGMAIL

Your acceptance letter will include your J number. Use this to sign in.

5. APPLY TO LIVE ON CAMPUS

SouthAlabama.edu/MyUSAHousing

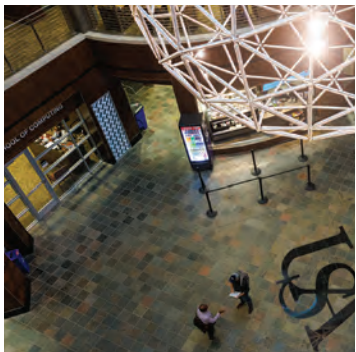
6. PRE-ORIENTATION AND ORIENTATION

Prior to orientation, you should submit immunization records and complete an online alcohol-prevention program.

7. ACADEMIC ADVISING

Your academic advisor will assist you with course selection.

8. ATTEND YOUR ORIENTATION SESSION



ACADEMIC PROGRAMS

PAT CAPPS COVEY COLLEGE OF ALLIED HEALTH PROFESSIONS

Biomedical Sciences
Emergency Medical Services
EMT Certification
Professional Health Sciences
Radiologic Sciences
Speech and Hearing Sciences

COLLEGE OF ARTS AND SCIENCES

Advertising and Public Relations
Anthropology
Art
Biology
Chemistry
Communication Studies
Criminal Justice
Digital Film and TV
Dramatic Arts
English
Environmental and Sustainability
Sciences
Modern Languages and Literature
Geography
Geology
Gerontology (Certificate)
History
International Studies
Journalism
Mathematics/Statistics
Marine Sciences
Meteorology-Professional Track
Meteorology-Graduate School
Track
Meteorology-Broadcast Met
Track
Music
Philosophy
Physics
Political Science
Psychology
Social Work
Sociology
Theatre Arts

MITCHELL COLLEGE OF BUSINESS

Accounting
Economics and Finance-
Economics Concentration
Economics and Finance-
Finance Concentration
Economics and Finance-
Real Estate Concentration
General Business
International Business
Management-
Entrepreneurship Concentration
Management-General
Management Concentration
Management-Human Resources
Concentration
Marketing-Marketing
Management Concentration
Marketing-Professional Sales
Concentration
Supply Chain Management

SCHOOL OF COMPUTING

Computer Science
Health Informatics
Information Systems
Information Technology
Process Technology Certification

COLLEGE OF EDUCATION AND PROFESSIONAL STUDIES

Diversity and Cultural Competence
Certification
Early Childhood Studies
Elementary Education K-6
Exercise Physiology and Kinesiology
Exercise Science - health and
fitness concentration
Exercise Physiology and Kinesiology
Exercise Science -
pre-professional concentration
Exercise Physiology and Kinesiology
Health Education 6-12 Teaching
Certification
Exercise Physiology and Kinesiology
Health Promotion

Exercise Physiology and Kinesiology
Physical Education P-12 and
Health Education Teaching
Certification
Health - Health Education 6-12
Teacher Certification
Health -Health Promotion
Health - Physical Ed-Physical
Education P-12 and Health
Education 6-12 Teacher
Certification
Hospitality and Tourism
Management
Interdisciplinary Studies
Organizational Leadership
Recreational Therapy
Secondary Education Biology
Secondary Education English
Language Arts
Secondary Education General
Sciences
Secondary Education
Mathematics
Secondary Education Social
Science
Special Education
Sport Management and
Recreation Studies-Coaching
Administration
Sports Management and
Recreation Studies-Sport
Administration
TEFL/TESL Certification

COLLEGE OF ENGINEERING

Chemical Engineering
Civil Engineering
Computer Engineering
Electrical Engineering
Mechanical Engineering

COLLEGE OF NURSING

Nursing

HONORS COLLEGE

The Honors College provides students with engaging opportunities to stimulate thinking and intellectual curiosity and to give back to our communities. Honors students and faculty work together throughout the University's colleges, establishing a center of innovation and collaboration. The Honors College is a magnet for differently talented and motivated campus leaders, and constitutes a distinct and valuable asset to the University's culture and community.

SouthAlabama.edu/Honors



IN THE PAST FIVE YEARS, USA HONORS COLLEGE STUDENTS HAVE WON:

- Upwards of 100 nationally competitive academic awards, scholarships and fellowships.
- Seven Goldwater awards (the most prestigious award for STEM undergraduates in the country).
- Multiple awards from the National Science Foundation, National Institutes of Health, Tau Beta Pi Engineering Honor Society, American Meteorological Society and more.



ACADEMIC PROGRAMS

Biomedical Sciences
Emergency Medical Services
EMT Certification
Professional Health Sciences
Radiologic Sciences
Speech and Hearing Sciences



ESHAUN WRAY

Class of 2021

B.S. Speech & Hearing Science
with a minor in Psychology

Scan for more.



PAT CAPPS COVEY COLLEGE OF ALLIED HEALTH PROFESSIONS

The Pat Capps Covey College of Allied Health Professions is dedicated to providing the highest quality in basic medical sciences and health professional education to meet healthcare needs and to contribute to new knowledge through research. The College has seven departments: Biomedical Sciences, Emergency Medical Services, Occupational Therapy, Physical Therapy, Physician Assistant Studies, Radiologic Sciences, and Speech Pathology and Audiology. SouthAlabama.edu/alliedhealth



COLLEGE OF ARTS & SCIENCES

Arts and Sciences majors at USA learn to combine their disciplinary knowledge with invention, teamwork and creativity in order to find new answers and solutions. Whether in physics or philosophy, anthropology or visual arts, all fields in Arts and Sciences involve the study of those aspects of our world that address complex, open-ended problems and challenges. As a result, earning an Arts and Sciences degree provides for a rich development of the whole person.

SouthAlabama.edu/artsandsci



ACADEMIC PROGRAMS

Advertising and Public Relations
Anthropology
Art
Biology
Chemistry
Communication Studies
Criminal Justice
Digital Film and TV
Dramatic Arts
English
Environmental and Sustainability
Sciences
Modern Languages and Literature
Geography
Geology
Gerontology (Certificate)
History
International Studies
Journalism
Mathematics/Statistics
Marine Sciences
Meteorology-Professional Track
Meteorology-Graduate School
Track
Meteorology-Broadcast Met
Track
Music
Philosophy
Physics
Political Science
Psychology
Social Work
Sociology
Theatre Arts



KALEB NAILER
 Class of 2019
 B.A. History
[Scan for more.](#)



CARMEN HERNANDEZ
 Class of 2022
 B.S. Meteorology
[Scan for more.](#)





MITCHELL COLLEGE OF BUSINESS

The Mitchell College of Business offers undergraduate majors in accounting, economics and finance, general business, international business, management, marketing, and supply chain and logistics management. The College also offers a Master of Business Administration, a Master of Accounting and a Doctor of Business Administration with concentrations in business analytics, management and marketing. It holds AACSB accreditations in both business and accounting. The Mitchell College of Business emphasizes experiential learning opportunities throughout the curriculum through internships, course assignments and center-driven projects. The College prides itself in ensuring that its students are more than just a number.

SouthAlabama.edu/mcob



ACADEMIC PROGRAMS

- Accounting
- Economics and Finance-
Economics Concentration
- Economics and Finance-
Finance Concentration
- Economics and Finance-
Real Estate Concentration
- General Business
- International Business
- Management-
Entrepreneurship Concentration
- Management-General
Management Concentration
- Management-Human Resources
Concentration
- Marketing-Marketing
Management Concentration
- Marketing-Professional Sales
Concentration
- Supply Chain Management



MADDIE MITCHELL

Class of 2021

B.S.B.A in Management with a
concentration in Human Resources

Scan for more.



ACADEMIC PROGRAMS

Computer Science
Health Informatics
Information Systems
Information Technology
Process Technology Certification



**DEMARCUS
WILLIAMS**

Class of 2018
B.S. Computer Science
[Scan for more.](#)



SCHOOL OF COMPUTING

Establishing a skilled computing workforce is essential to the long-term economic stability of the region and can provide South Alabama students long-term, recession-resilient employment opportunities. Whether you are interested in creating computer games, defending cyberspace, building computer networks or finding computing solutions to business challenges, South's School of Computing offers education and support to help you start your career. Our graduates are equipped with a broad spectrum of technological and analytical skills. Students have been placed in high-tech companies such as Microsoft, Northrop Grumman and Cisco. The School of Computing also offers a scholarship program that leads directly to cyber defender jobs in the federal service sector.

SouthAlabama.edu/SOC



MIA PENNISON,
Class of 2022
B.A. Special Education
Scan for more.



COLLEGE OF EDUCATION AND PROFESSIONAL STUDIES

The College of Education and Professional Studies offers a quality-driven education equipping students for their careers and beyond, actively supporting them every step of the way through a residential campus experience or online. Graduates are highly qualified professionals who serve as teachers, administrators, instructional designers, counselors and other professionals in educational settings, industry and human service agencies. The College also offers degrees for those seeking a career in a variety of disciplines and for a range of professional roles including health, fitness and wellness, mental health counseling, hospitality and tourism, sport management, and recreation. SouthAlabama.edu/CEPS



ACADEMIC PROGRAMS

Diversity and Cultural Competence Certification
Early Childhood Studies
Elementary Education K-6
Exercise Physiology and Kinesiology
Exercise Science – health and fitness concentration
Exercise Physiology and Kinesiology
Exercise Science – pre-professional concentration
Exercise Physiology and Kinesiology
Health Education 6-12 Teaching Certification
Exercise Physiology and Kinesiology
Health Promotion
Exercise Physiology and Kinesiology
Physical Education P-12 and Health Education Teaching Certification
Health – Health Education 6-12 Teacher Certification
Health – Health Promotion
Health – Physical Ed-Physical Education P-12 and Health Education 6-12 Teacher Certification
Hospitality and Tourism Management
Interdisciplinary Studies
Organizational Leadership
Recreational Therapy
Secondary Education Biology
Secondary Education English Language Arts
Secondary Education General Sciences
Secondary Education Mathematics
Secondary Education Social Science
Special Education
Sport Management and Recreation Studies-Coaching Administration
Sports Management and Recreation Studies-Sport Administration
TEFL/TESL Certification

ACADEMIC PROGRAMS

Chemical Engineering
Civil Engineering
Computer Engineering
Electrical Engineering
Mechanical Engineering



CHRIS WILLHITE

Class of 2022

B.S. Civil, Coastal and
Environmental Engineering

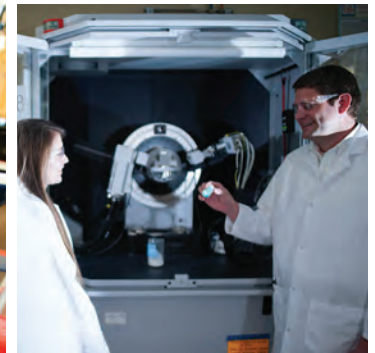
Scan for more.

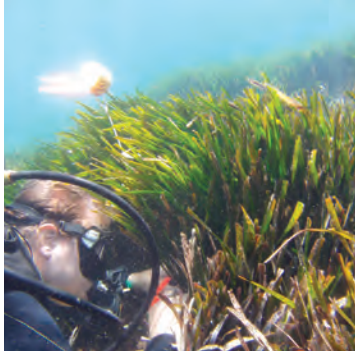


COLLEGE OF ENGINEERING

The College of Engineering at the University of South Alabama is recognized for the quality of our graduates. Our students have done well in industrial and government careers, not only in the local Gulf Coast region, but also nationally and internationally. The College offers five baccalaureate degrees, five master's degrees and a doctoral degree in systems engineering. The foundation of the College of Engineering is its excellent faculty, with their dedication to teaching and researching new knowledge.

SouthAlabama.edu/engineering





SCHOOL OF MARINE & ENVIRONMENTAL SCIENCES

The University of South Alabama has a history of investment in marine sciences education and research, supporting a faculty of renowned experts in a range of marine-related disciplines. The USA School of Marine & Environmental Sciences within the College of Arts and Sciences is designed to address pressing environmental concerns of the coastal regions. The School trains the next generation of marine and environmental scientists, conducts cutting-edge research, and extends the impact of this training and research through service activities. SouthAlabama.edu/marinesciences



ACADEMIC PROGRAMS

Marine Sciences
Environmental and Sustainability Sciences



LEAH TOWNSEND

Class of 2023

B.S. Marine Sciences

Scan for more.





The College of Nursing offers bachelor's, master's and doctoral degree programs as well as postgraduate certificates.

COLLEGE OF NURSING

The College of Nursing offers quality, innovative educational programs for students working toward earning a Bachelor of Science in Nursing (BSN). Using highly trained faculty and staff, state-of-the-art simulation and lab facilities, and local clinical experiences, our on-campus students train to license successfully in their profession, as well as further their education in our Master of Science in Nursing and Doctor of Nursing Practice programs. As early adopters of the use of technology in education, the faculty at the College of Nursing are also experts in delivering high-quality online nursing degree programs for the working nurse. SouthAlabama.edu/CON



ACADEMIC PROGRAMS

Nursing



FAITH EDGELL

Class of 2022

B.S. Nursing

Scan for more.



STUDY ABROAD

Study Abroad is the opportunity for South students to spend time in a different country while earning credit toward their degree through taking classes, interning, volunteering and more. Studying abroad can be one of the highlights of a student's university career, giving students a wonderful and challenging experience that will allow students to grow both academically and professionally. Get started today!

- \$100,000 awarded in study abroad scholarships every year
- Programs in over 60 countries
- Internships, volunteer programs and research opportunities available
- Trips can be as short as one week or as long as one year.
- Study abroad and finish in four years.

The USA Visual Arts in Italy program provided students from all majors the opportunity to explore firsthand the art, architecture, archaeology, and culture of Italy.



ALLISON DOLLUS

South gave me an opportunity to study abroad. It allowed me to experience a new culture while earning credits for my degree! The Study Abroad office provided me with different countries I could study in. Students can apply for different types of programs lasting a few weeks, a semester or all year. South offers scholarship opportunities for students who would like to study abroad. These scholarships assist in covering the cost of tuition and living expenses. As a Spanish minor, I chose to study abroad in Spain for six weeks with a USA faculty member, and I received nine credits to complete my Spanish minor. Studying abroad gave me a new perspective on different cultures. I was able to increase the level of my Spanish skills by immersing myself in the language and being exposed to a different way of living. Without the help and guidance of the South faculty and Study Abroad program the memories and the sights I experienced would not have been possible.

TRADITIONS AT SOUTH

Junk the Jungle
Oozeball
NPHC Step Show
Songfest
Jaguar Block Party
Prowl Homecoming Parade
Glow in the Dark Dodgeball
Fun Fest
Haunted Nature Trail
Homecoming Concert
Headphone Glow Party





RESOURCES

SOUTHALABAMA.EDU/ ADMISSIONS

- Admissions
- Campus tours
- Recruitment
- Enrollment
- Orientation
- Scholarship services
- Financial aid

SOUTHALABAMA.EDU/ ACADEMICSUCCESS

- Center for Academic Excellence
- Transfer services
- Free tutoring
- Writing resources

SOUTHALABAMA.EDU/ STUDENTSERVICES

- Career Services
- Center for Educational Accessibility and Disabilities Resources
- International services
- Housing and dining
- Veteran Affairs

CAMPUS LIFE

- JagTran – campus transportation
- Athletics
- Intramural sports
- Multicultural Student Affairs
- Office of Community Engagement
- Student Government Association
- Police and security
- Student organizations

HEALTH AND WELLNESS

- Student Health Center
- Student health insurance
- Counseling and testing services
- USA Health
- Campus Recreation
- Outdoor Adventures
- Jag Fitness Trail (pictured)





FIRST YEAR EXPERIENCE

College readiness/college integration courses are among the research-based practices recommended for improving retention and are considered a high impact educational practice by the AAC&U LEAP (Liberal Education and America's Promise) initiative. USA offered Freshmen Experience Courses in the College of Arts and Sciences, the College of Engineering, the Mitchell College of Business, the School of Computer and Information Sciences, and the College of Nursing. Course enrollment is typically restricted to 25 students.

(251) 460-7103

studentsuccess@southalabama.edu

STUDENT ACADEMIC SUCCESS

Student Academic Success (SAS) supports the mission of the University by developing, implementing, and assessing initiatives and practices to ensure all students are offered the resources and relationships necessary for high quality learning, academic persistence, and degree completion.

(251) 460-7103

studentsuccess@southalabama.edu

CENTER FOR ACADEMIC EXCELLENCE

The Center for Academic Excellence is South Alabama's tutoring and writing center. The CAE's mission is to provide tutoring and other learning resources to help all USA students succeed in their coursework and achieve their goals. This mission is grounded in the belief that students can learn anything with hard work, perseverance, and good study habits. Academic Advising Academic advising is the process where you obtain the critical information you need to make thoughtful decisions about your college career, such as deciding upon your major or solving any roadblocks you may encounter along the way. An academic advisor's purpose is to encourage students to develop as self-directed learners and decision makers. Good academic advising also supports the mission of the University of South Alabama through encouraging student academic success and persistence towards graduation.

(251) 460-6480

cae@southalabama.edu

MARX LIBRARY

To support the present and anticipated teaching, research and service goals of the University of South Alabama, the mission of the University Libraries is to select, acquire, organize, promote and provide timely and efficient access to information resources, regardless of format or location. This includes instruction and critical evaluation of those resources.

(251) 460-7028

webref@southalabama.edu

CENTER FOR EDUCATIONAL ACCESSIBILITY & DISABILITY RESOURCES (CEADR)

The University provides services to students with physical, psychological, or learning disabilities. Students in need of accommodations due to a disability should make contact with the Center for Educational Accessibility & Disability Resources by visiting us in the Educational Services Building or by calling or emailing.

(251) 460-7212

disabilityservices@southalabama.edu

CAMPUS RECREATION & WELLNESS

The Student Recreation Center (SRC) is the Department of Campus Recreation and Wellness' state-of-the-art fitness center. Our 116,000 square-foot facility hosts events and activities for all programs within our department.

(251) 460-6065

src@southalabama.edu

CLUBS

As part of the Division of Student Affairs, USA Student Activities seeks to provide students with developmental opportunities beyond the scope of the classroom through involvement in activities, campus and community service, and student organizations. Our office is responsible for the registration and supervision of over 200 student clubs and organizations ranging from social to professional/departmental, religious organizations, honor societies and special interest groups. There is something for everyone!

(251) 461-1627

southsports@southalabama.edu

STOKES HALL

6299

HOUSING

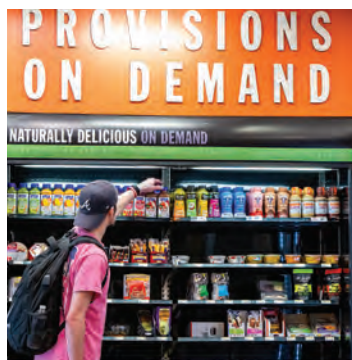
Stay close and stay connected! USA Housing offers 33 unique on-campus residence halls, all of which are:

- A short walk or tram ride to classes.
- Close to on-campus dining options.
- Near the Rec Center and fitness trail.
- Right next to Hancock Whitney Stadium.

Live on campus and you get everything in one affordable package: parking, wireless internet, cable TV, furniture, utilities, free unlimited laundry access and support staff who are available 24 hours a day.

South students who live on campus say it's the best way to get involved, make friends and stay on top of studies.

To see all the housing choices and benefits of living on campus, visit SouthAlabama.edu/Housing.



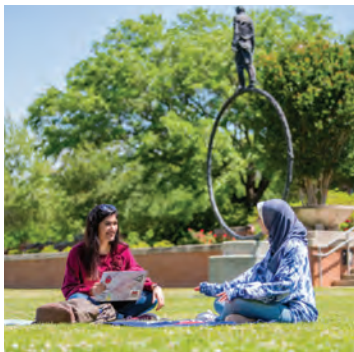
DINING

USA Dining offers a wide variety of food and convenient services across campus. These services are designed with your needs in mind, providing flexibility and convenience to meet your demanding schedule. The meal plan options for residential students offer quality food at a discounted price. The Dining Hall is conveniently located within the residential area. Commuter meal plans are also available.

Other campus dining options include:

- Starbucks
- Einstein Bros. Bagels
- Greens to Go
- P.O.D. (Provisions On Demand)
- Chick-fil-A
- Delta Deli
- Moe's Southwest Grill
- Panda Express
- Prowler Bowls





FINANCIAL AID

You can submit your Free Application for Federal Student Aid (FAFSA) at **FAFSA.gov** starting Dec. 1 of your senior year. Financial assistance can help you make a college education possible and South is eager to help you as you and your family make this most important investment. Financial aid is awarded annually for the academic year, which begins each August. The University uses FAFSA to evaluate students for federal and need-based aid.

FINANCIAL AID

[SouthAlabama.edu/departments/finaid](https://southalabama.edu/departments/finaid)

USA PAYMENT PLAN

[SouthAlabama.edu/studentaccounting](https://southalabama.edu/studentaccounting)

VETERAN AFFAIRS

[SouthAlabama.edu/veterans](https://southalabama.edu/veterans)

(251) 460-6230

ONE STOP @ SOUTH

[SouthAlabama.edu/onestop](https://southalabama.edu/onestop)

(251) 341-4USA (4872)

Be sure to check out our College Cost Estimator to help plan ahead:

southalabama.edu/onestop/costestimator



SCHOLARSHIPS

For a full listing of available scholarships, visit [SouthAlabama.edu/freshscholarships](https://southalabama.edu/freshscholarships). Freshman ACT/GPA admissions scholarships are automatically awarded and test optional awards are reviewed weekly.

For additional scholarship consideration, visit JagSPOT, the University's scholarship portal. The University of South Alabama reserves the right the right to adjust scholarship levels after our priority deadlines have passed. Please be sure to check our website for further details and opportunities.

SCHOLARSHIPS ARE AWARDED TO INCOMING FRESHMEN BASED ON THEIR TEST SCORES AND HIGH SCHOOL/COLLEGE GPA AS WELL AS TEST OPTIONAL BASED ON GPA AND COURSE RIGOR.

2023-2024 FRESHMEN SCHOLARSHIPS 4-YEAR RENEWABLE AWARDS

ACT	SAT	GPA 3-3.49	GPA 3.5-3.74	GPA 3.75 AND UP
21-22	1060-1120	\$2,000	\$2,500	\$3,000
23-24	1130-1190	\$3,000	\$3,500	\$4,000
25-26	1200-1250	\$3,500	\$4,000	\$5,000
27-29	1260-1350	\$4,000	\$5,500	\$6,000
30-31	1360-1410	\$4,500	\$7,000	\$8,000
≥32	1420-1600	\$5,000	A&S Tuition*	A&S Tuition*

**Tuition value is up to 30 credit hours at the Arts & Sciences rate per year (fall/spring).
Out-of-state students awarded one of these awards receive in-state tuition.*

2023-2024 TEST OPTIONAL 4-YEAR RENEWABLE AWARDS

USA also offers scholarships in the amounts of \$2,000 - \$9000 for students who chose to apply test optional to South. Those scholarships are awarded on the basis of GPA, course selection (honors, AP, etc.), and a variety of other holistic factors.

In addition, South offers need-based funding to admitted students who qualify through their FAFSA's. These awards are made after initial scholarship consideration, so it is possible to receive one award and then a few weeks later receive another.

Students should always check JagSPOT for additional scholarship opportunities and be sure to apply for them by **February 15**.

IMPORTANT DATES

BEGINNING AUGUST

Apply for admissions
explore.southalabama.edu/apply

OCTOBER 1

Apply for additional scholarships in JagSPOT by February 15.
SouthAlabama.edu/scholarships

AUGUST 1

Honors College application opens.



STOP ONE @ SOUTH

At the University of South Alabama, there's a shortcut for students with questions about everything from financial aid to academic resources to campus activities. It's called One Stop. And it's making problem-solving more convenient so students can focus on school and make the most of their college experience.

SouthAlabama.edu/OneStop

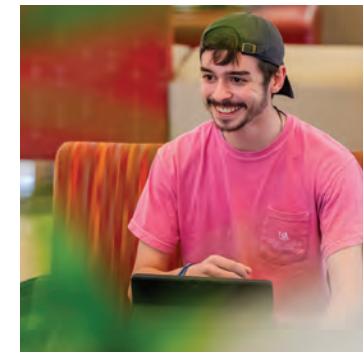
COST

2023-2024 ANNUAL COST OF ATTENDANCE

	YEAR IN-STATE	YEAR OUT-OF-STATE
Tuition	\$11,220	\$22,440
Fee*	\$400	\$400
Room Rate	\$4,480-\$7,250	\$4,480-\$7,250
Meal Plan	\$4,350	\$4,350
Books & Supplies (est.)	\$2,020	\$2,020
Total Cost:	\$22,470 - \$25,240	\$33,690-\$36,460

*An Academic Infrastructure & Technology Fee of \$200 for full-time students is added per semester.

A monthly payment plan for tuition, housing and dining costs is available. Visit SouthAlabama.edu/studentaccounting.



SEPTEMBER 1
On campus housing application opens

SEPTEMBER 1
Early Acceptance Program (EAP) applications will open.



DECEMBER
The Free Application for Federal Student Aid (FAFSA) opens.
FAFSA.gov

FEBRUARY
Registration opens for Southbound Orientation.
SouthAlabama.edu/departments/orientation

APRIL 1
On campus housing application opens + prepayment priority date

MAY - AUGUST
Southbound Orientation sessions are held.



SOUTH IS AMAZING,
BUT DON'T TAKE OUR
WORD FOR IT. COME
SEE FOR YOURSELF!

We are so glad that you are interested in connecting with us. We can't wait to show all of our prospective Jaguars what South Alabama is all about. Check out the options below for visiting with us! Students who attend an on-campus tour with a South Guide, virtual meeting with USA recruitment staff, or one of our special events are eligible to receive a \$100 visit credit.

CAMPUS TOURS

Tours are given Monday-Friday and select Saturdays. Go to SouthAlabama.edu/visit or call (251) 341-3951 to schedule a tour.

USA DAYS

Saturday open houses held in the fall and spring. For dates and additional information, visit SouthAlabama.edu/usaday.

VIRTUAL MEETINGS

We can't wait for you to be here, but in the meantime, we want to answer your questions and tell you all about South. During this meeting, you will have the opportunity to meet with one of our Admissions Officers and learn more about our great University. SouthAlabama.edu/visit

WELCOME TO THE GULF COAST

The University of South Alabama is located minutes from the beautiful Gulf of Mexico in Mobile, Alabama. Mobile boasts a rich history and a prime location and is a vibrant cultural, recreational and economic hub along the Gulf Coast.



ARTS AND ENTERTAINMENT

Mobile has a thriving arts community with festivals, art walks and live music year-round. The Hangout Music Festival, held over three days in May in Gulf Shores, attracts a lineup of more than 50 artists and thousands of music lovers.



GULF COAST BEACHES

South Alabama's campus is a short drive away from the most beautiful beaches in the world.

Dauphin Island, AL, 33.9 mi.

Gulf Shores, AL, 68.4 mi.

Gulfport, MS, 77.0 mi.

Destin, FL, 122.2 mi



MARDI GRAS

Mobile is the birthplace of Mardi Gras (1703), and the city celebrates big with multiple parades leading up to Fat Tuesday. Every year, the Jaguar Marching Band participates in at least one parade, with President Bonner throwing beads to thousands of people lining the streets.



BELLINGRATH GARDENS AND HOME

The 65-acre property sits on Fowl River in south Mobile County and is listed on the National Register of Historic Places. The home and gardens are open to the public year-round, and the Magic Christmas in Lights has been named one of the top ten light displays in America by *USA Today*.



THE FOOD

Being on the water has it's advantages, one of them being an abundance of fresh local seafood. From crawfish boils to shrimp po-boys, you'll find endless opportunities to satisfy your cravings.

CAMPUS MAP

V Visitor Parking

? Information and Parking Permits/
USA Police

DESIGNATED PARKING LOTS

L101 Intramural Fields
L102 Intramural Fields
L103 Intramural Field House
L104 Transportation Services
L105 Hancock Whitney Stadium South
L201 Baptist Church
L202 Faculty Club
L203 Stadium Dr. Southwest
L204 Stadium Dr. Southeast 1
L205 Stadium Dr. Southeast 2
L206 Sorority Houses
L301 Stanky Field
L302 Jaguar Blvd. South
L303 Beta Gamma Lot
L304 Jaguar Blvd. North
L305 Delta Loop
L306 Greek Dr.-Stokes Hall
L307 Hancock Whitney Stadium East

L308 Pi Kappa Phi Fraternity House
L309 Sigma Chi Fraternity House
L310 Pi Kappa Alpha Fraternity House
L311 Athletics Administration
L312 Football Field House
L401 Mitchell Center
L501 Shelby/Student Services Dr. South
L502 Shelby/Student Services Dr. North
L503A University Commons-Academics
L503B University Commons-USA Health
L601 Laidlaw/Mitchell College of Business
L602 Administration/USA South Dr.
L603 Mitchell College of Business
L604 Student Center East
L605 Bethel/Townhouse
L606 Student Center West
L607 Humanities
L608 Communication/Science Laboratory

L607 MacQueen Center/
Humanities South
L701 Visual Arts
L801 Health Sciences
L802 College of Medicine
L803 Life Sciences Building
L804 Marx Library/Humanities North/
Chemistry
L901 Aubrey Green at Ernest Cleverdon
L902 Clinic Dr. North
L903 Clinic Dr. South
L904 Educational & Outreach
L905 TRP North
L906 Laboratory of Infectious Diseases
L907 TRP I
L908 TRP II

**FOLLOW THE
PAW PRINTS
FOR CAMPUS
TOUR**

Honors College
Seamen's Bethel
(251) 461-1637

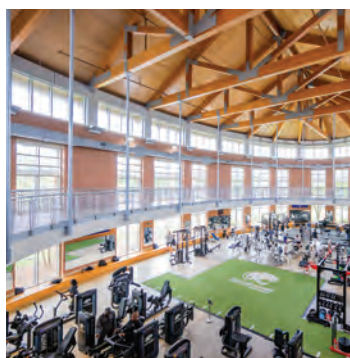
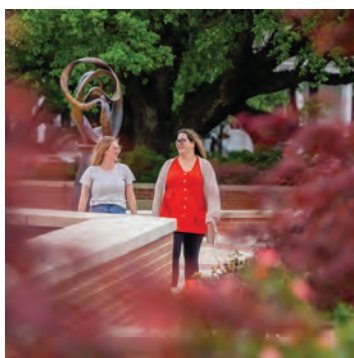
**New Student
Orientation**
Mobile
Townhouse

**Mitchell College
of Business**
103 Mitchell College
of Business
(251) 560-6419

**College of
Education and
Professional
Studies**
3600 University
Commons
(251) 380-2738

**College of Arts
and Sciences**
118 Humanities Building
(251) 460-6280

**College of
Medicine**
5795 USA North Dr.
(251) 341-3030





CAMPUS FACILITIES, ALPHABETICAL LISTING

- | | | | |
|--|---|--|---|
| 84 Academic Services Center | 26 Delta Commons | 2 Intramural Fieldhouse | 52 Parking Services |
| 19 Alpha Gamma Delta Sorority House | 27 Delta Residence Hall 3 | 1 Intramural Sports Complex | 17 Phi Mu Sorority House |
| 102 Alpha Hall East | 28 Delta Residence Hall 4 | 66 Jag Fitness Trail | 23 Pi Kappa Alpha Fraternity House |
| 106 Alpha Hall South | 29 Delta Residence Hall 5 | 62 Jaguar Track | 21 Pi Kappa Phi Fraternity House |
| 18 Alpha Omicron Pi Sorority House | 30 Delta Residence Hall 6 | 6 Jaguar Training Center | 52 Police/Beta-Gamma Commons |
| 68 Archaeology Lab 1 | 15 Dining Facility (Fresh Food Company) | 5 James A. and Frances H. Yancey | 40 Property Inventory Warehouse |
| 69 Archaeology Lab 2 | 96 Education & Outreach Building | Football Practice Facility | 65 Science Laboratory Building |
| 67 Archaeology Museum | 13 Epsilon Residence Hall 1 | Jon Lieber Clubhouse | 79 Seamen's Bethel/Honors College |
| 70 Archaeology Storage | 14 Epsilon Residence Hall 2 | 24 Kappa Alpha Fraternity House | 117 Shelby Hall |
| 9 Athletics Administration Building | 10 Faculty Club | 20 Kappa Delta Sorority House | 22 Sigma Chi Fraternity House |
| 63 Athletics Annex | 59 Farish Beard Indoor Practice Facility (Softball) | 41 Kappa Sigma Chapter Room | 58 Soccer Field (The Cage) |
| 32 Azalea Hall | 7 Football Fieldhouse | 95 Laboratory of Infectious Diseases | 57 Softball Field (Jaguar Field) |
| 33 Beta Apartment Residence Hall 1 | 42 Gamma Residence Hall 0 | 114 Laidlaw Performing Arts Center | 56 Softball/Soccer Fieldhouse |
| 34 Beta Apartment Residence Hall 2 | 43 Gamma Residence Hall 1 | 110 Life Sciences Building | 55 Stanky Field |
| 35 Beta Apartment Residence Hall 3 | 44 Gamma Residence Hall 2 | 109 Life Sciences Lecture Hall | 25 Stokes Hall |
| 36 Beta Apartment Residence Hall 4 | 45 Gamma Residence Hall 3 | 83 Lubel Memorial Tennis Courts | 92 Student Center |
| 37 Beta Apartment Residence Hall 5 | 46 Gamma Residence Hall 4 | 53 Luis Gonzalez Hitting Facility | 22 Student Health Center |
| 98 BMA Dialysis Center | 47 Gamma Residence Hall 5 | 77 MacQueen Alumni Center | 12 Student Recreation Center |
| 91 Bookstore | 48 Gamma Residence Hall 6 | 74 Maintenance Garage | 99 Technology & Research Park |
| 31 Camellia Hall | 49 Gamma Residence Hall 7 | 60 Marching Band Practice Field | 97 Technology & Research Park, Building III |
| 90 Center for Educational Accessibility & Disability Resources | 50 Gamma Residence Hall 8 | 61 Marching Band Practice Field Pavilion | 72 Telecommunications Building |
| 105 Central Services Admin Building | 51 Gamma Residence Hall 9 | 94 Marx Library | 113 Tholos of Delphi Replica |
| 71 Central Utilities Plant | 108 Glass Arts Building | 111 Mathematical Sciences & Physics Building | 78 Toulmin House (formerly Alumni Hall) |
| 103 Charles M. Baugh Biomedical Library | 38 Grounds Department | 104 Medical Sciences Building | 4 Transportation Services |
| 76 Chemistry Building | 8 Hancock Whitney Stadium | 93 Meisler Hall | 39 Treatment Storage & Disposal |
| 16 Chi Omega Sorority House | 85 Health, Kinesiology & Sport Building/Jag Gym | 82 Mitchell Center | 118 University Commons |
| 64 Communication Building | 100 Health Sciences Building | 115 Mitchell College of Business | 107 Visual Arts Complex |
| 87 Computer Services Center | 101 Health Simulation Building | 116 Mitchell Learning Resource Center | 3 Warehouse |
| 73 Construction Services & Facilities Warehouse | 75 Humanities Building | 80 Mobile Townhouse | 112 Whiddon Administration Building |
| 88 Counseling & Testing | 89 Innovation in Learning Center | 81 Moulton Tower & Alumni Plaza | |
| | | 11 Outdoor Adventures | |

CAMPUS FACILITIES, NUMERICAL LISTING

- | | | | |
|---|---|---|--|
| 1 Intramural Sports Complex | 32 Azalea Hall | 62 Jaguar Track | 91 Bookstore |
| 2 Intramural Fieldhouse | 33 Beta Apartment Residence Hall 1 | 63 Athletics Annex | 92 Student Center |
| 3 Warehouse | 34 Beta Apartment Residence Hall 2 | 64 Communication Building | 93 Meisler Hall |
| 4 Transportation Services | 35 Beta Apartment Residence Hall 3 | 65 Science Laboratory Building | 94 Marx Library |
| 5 James A. and Frances H. Yancey | 36 Beta Apartment Residence Hall 4 | 66 Jag Fitness Trail | 95 Laboratory of Infectious Diseases |
| Football Practice Facility | 37 Beta Apartment Residence Hall 5 | 67 Archaeology Museum | 96 Education & Outreach Building |
| 6 Jaguar Training Center | 38 Grounds Department | 68 Archaeology Lab 1 | 97 Technology & Research Park, Building III |
| 7 Football Fieldhouse | 39 Treatment Storage & Disposal | 69 Archaeology Lab 2 | 98 BMA Dialysis Center |
| 8 Hancock Whitney Stadium | 40 Property Inventory Warehouse | 70 Archaeology Storage | 99 Technology & Research Park |
| 9 Athletics Administration Building | 41 Kappa Sigma Chapter Room | 71 Central Utilities Plant | 100 Health Sciences Building |
| 10 Faculty Club | 42 Gamma Residence Hall 0 | 72 Telecommunications Building | 101 Health Simulation Building |
| 11 Outdoor Adventures | 43 Gamma Residence Hall 1 | 73 Construction Services & Facilities Warehouse | 102 Alpha Hall East |
| 12 Student Recreation Center | 44 Gamma Residence Hall 2 | 74 Maintenance Garage | 103 Charles M. Baugh Biomedical Library |
| 13 Epsilon Residence Hall 1 | 45 Gamma Residence Hall 3 | 75 Humanities Building | 104 Medical Sciences Building |
| 14 Epsilon Residence Hall 2 | 46 Gamma Residence Hall 4 | 76 Chemistry Building | 105 Central Services Admin Building |
| 15 Dining Facility (Fresh Food Company) | 47 Gamma Residence Hall 5 | 77 MacQueen Alumni Center | 106 Alpha Hall South |
| 16 Chi Omega Sorority House | 48 Gamma Residence Hall 6 | 78 Toulmin House (formerly Alumni Hall) | 107 Visual Arts Complex |
| 17 Phi Mu Sorority House | 49 Gamma Residence Hall 7 | 79 Seamen's Bethel/Honors College | 108 Glass Arts Building |
| 18 Alpha Omicron Pi Sorority House | 50 Gamma Residence Hall 8 | 80 Mobile Townhouse | 109 Life Sciences Lecture Hall |
| 19 Alpha Gamma Delta Sorority House | 51 Gamma Residence Hall 9 | 81 Moulton Tower & Alumni Plaza | 110 Life Sciences Building |
| 20 Kappa Delta Sorority House | 52 Parking Services/Police/Beta-Gamma Commons | 82 Mitchell Center | 111 Mathematical Sciences & Physics Building |
| 21 Pi Kappa Phi Fraternity House | 53 Luis Gonzalez Hitting Facility | 83 Lubel Memorial Tennis Courts | 112 Whiddon Administration Building |
| 22 Sigma Chi Fraternity House | 54 Jon Lieber Clubhouse | 84 Academic Services Center | 113 Tholos of Delphi Replica |
| 23 Pi Kappa Alpha Fraternity House | 55 Stanky Field | 85 Health, Kinesiology & Sport Building/Jag Gym | 114 Laidlaw Performing Arts Center |
| 24 Kappa Alpha Fraternity House | 56 Softball/Soccer Fieldhouse | 86 Student Health Center | 115 Mitchell College of Business |
| 25 Stokes Hall | 57 Softball Field (Jaguar Field) | 87 Computer Services Center | 116 Mitchell Learning Resource Center |
| 26 Delta Commons | 58 Soccer Field (The Cage) | 88 Counseling & Testing | 117 Shelby Hall |
| 27 Delta Residence Hall 3 | 59 Farish Beard Indoor Practice Facility (Softball) | 89 Innovation in Learning Center | 118 University Commons |
| 28 Delta Residence Hall 4 | 60 Marching Band Practice Field | | |
| 29 Delta Residence Hall 5 | 61 Marching Band Practice Field Pavilion | | |
| 30 Delta Residence Hall 6 | | | |
| 31 Camellia Hall | | | |





ATHLETICS

The University of South Alabama fields eight men's and nine women's athletic programs, competing at the **NCAA Division I** level. South Alabama is a charter member of the **Sun Belt Conference** with a multisport history of excellence in competition and in the classroom.



**SOUTH HAS 17
NCAA DIVISION 1 TEAMS**

Men

- Baseball
- Football
- Basketball
- Tennis
- Golf
- Track & Field
- Cross Country

Women

- Soccer
- Softball
- Basketball
- Tennis
- Golf
- Track & Field
- Cross Country
- Volleyball



OFFICE OF NEW STUDENT RECRUITMENT

(251) 460-7834 | (800) USA-JAGS
recruitment@southalabama.edu

FOLLOW US

-  [@uofsouthalabama](https://www.instagram.com/uofsouthalabama)
-  [@theuniversityofsouthalabama](https://www.facebook.com/theuniversityofsouthalabama)
-  [@UofSouthAlabama](https://twitter.com/UofSouthAlabama)
-  [@University of South Alabama](https://www.linkedin.com/company/University%20of%20South%20Alabama)

USA does not discriminate on the basis of race, sex (including pregnancy), sexual orientation, religion, color, national origin, age, genetic information, disability or veteran status. For more information, contact the VP for Student Affairs at (251) 460-6172.



UNIVERSITY OF SOUTH ALABAMA
OFFICE OF NEW STUDENT RECRUITMENT
Meisler Hall Suite 2500
390 Student Center Circle
Mobile, Alabama 36688

Non-Profit
U.S. POSTAGE
PAID
Mobile, AL
Permit No. 506

