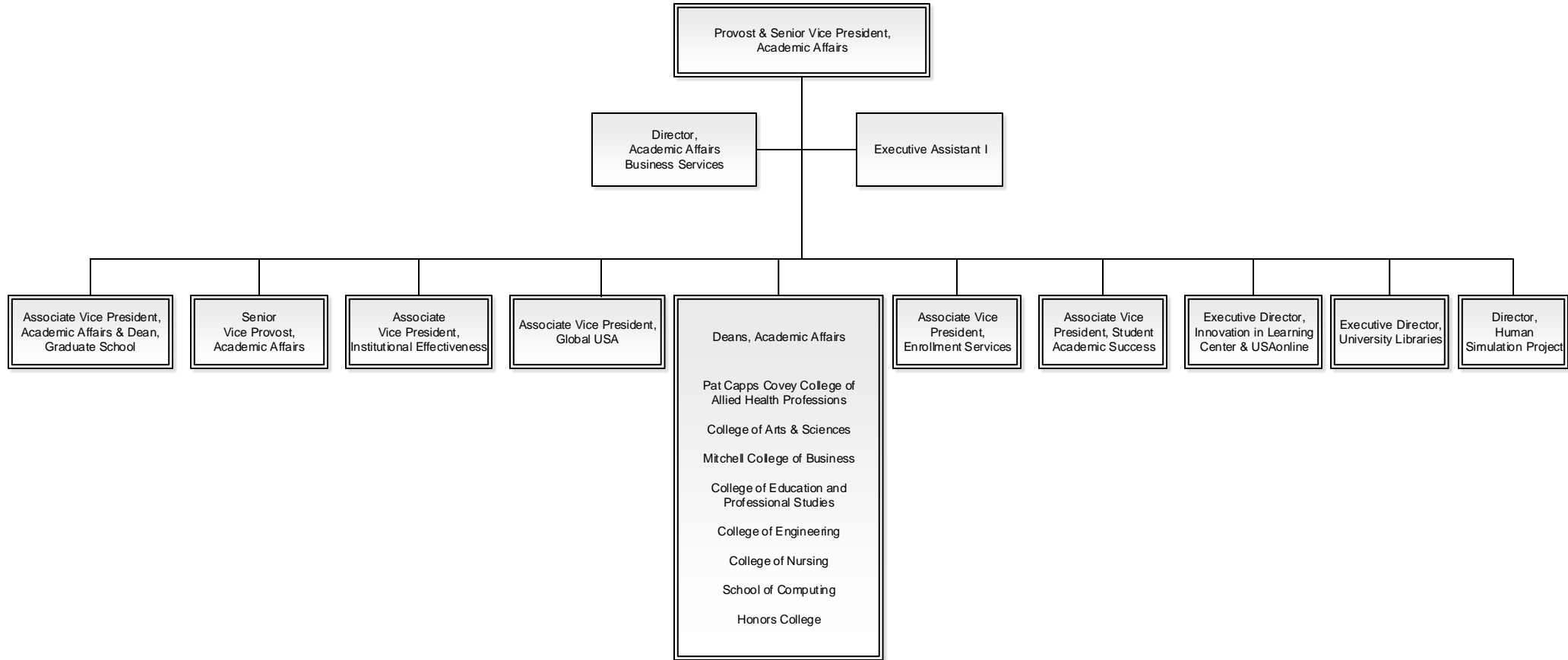


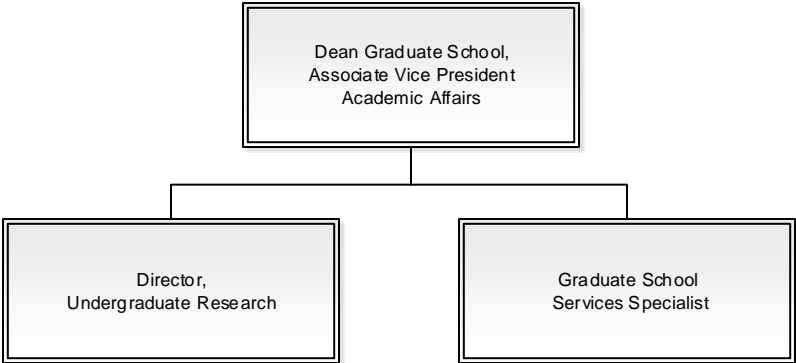
# University of South Alabama Office of Academic Affairs

---



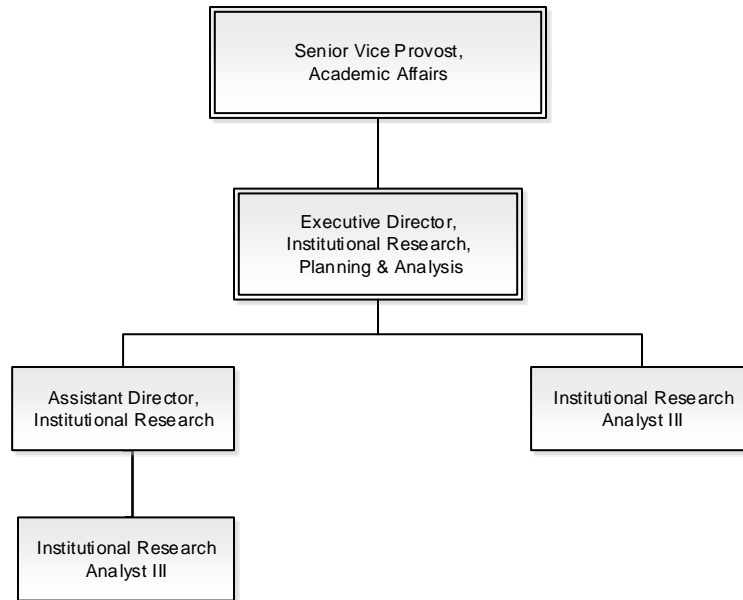
**Division of Academic Affairs  
Graduate School**

---



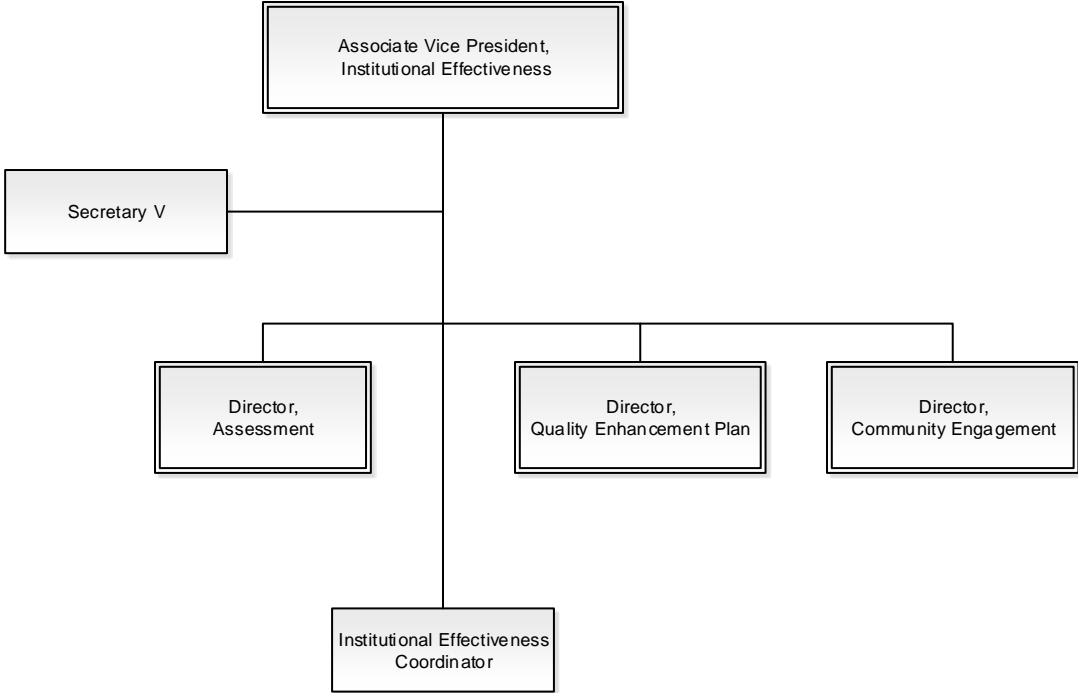
**Division of Academic Affairs  
Office of Institutional Research**

---

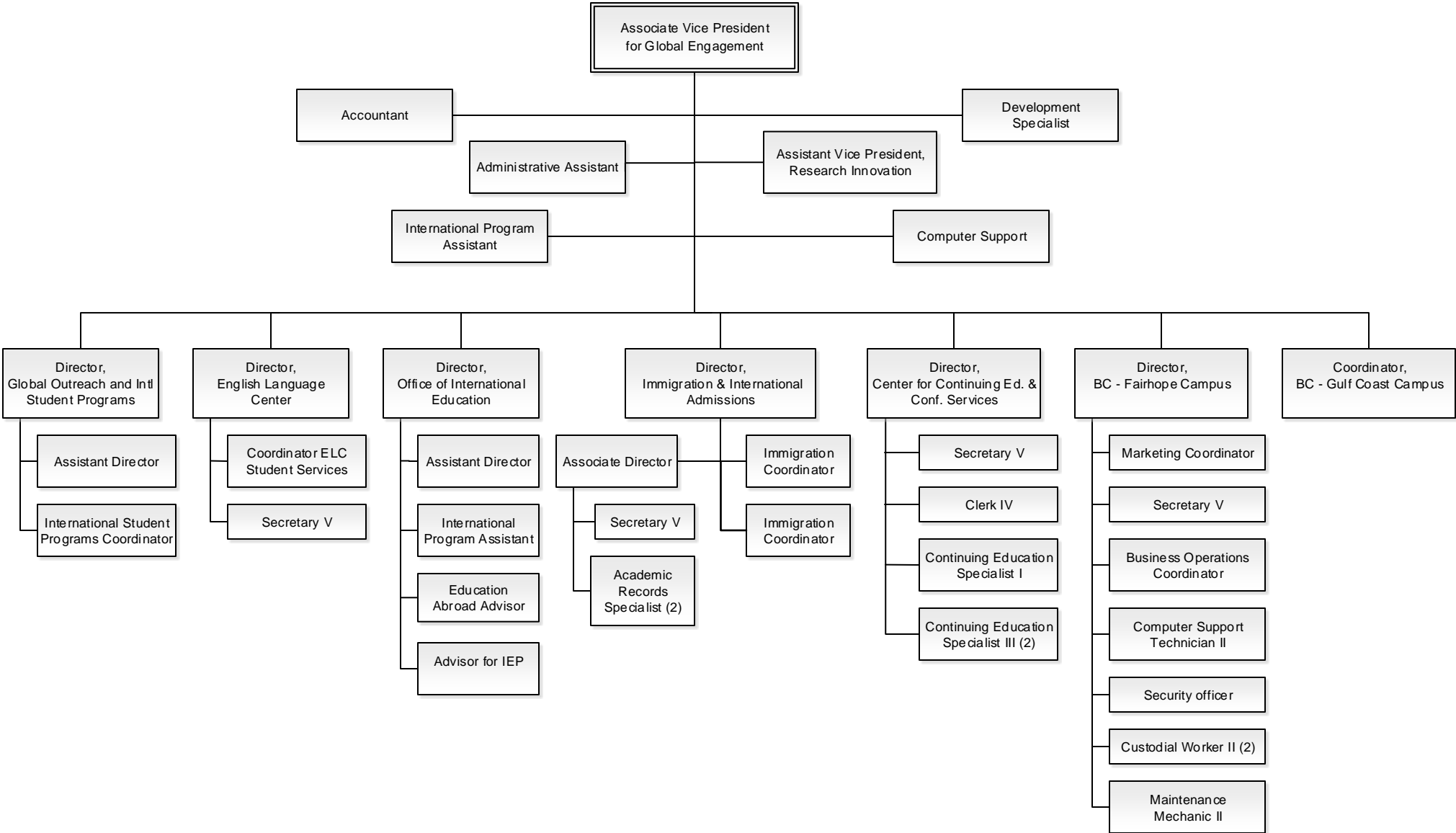


**Division of Academic Affairs  
Institutional Effectiveness**

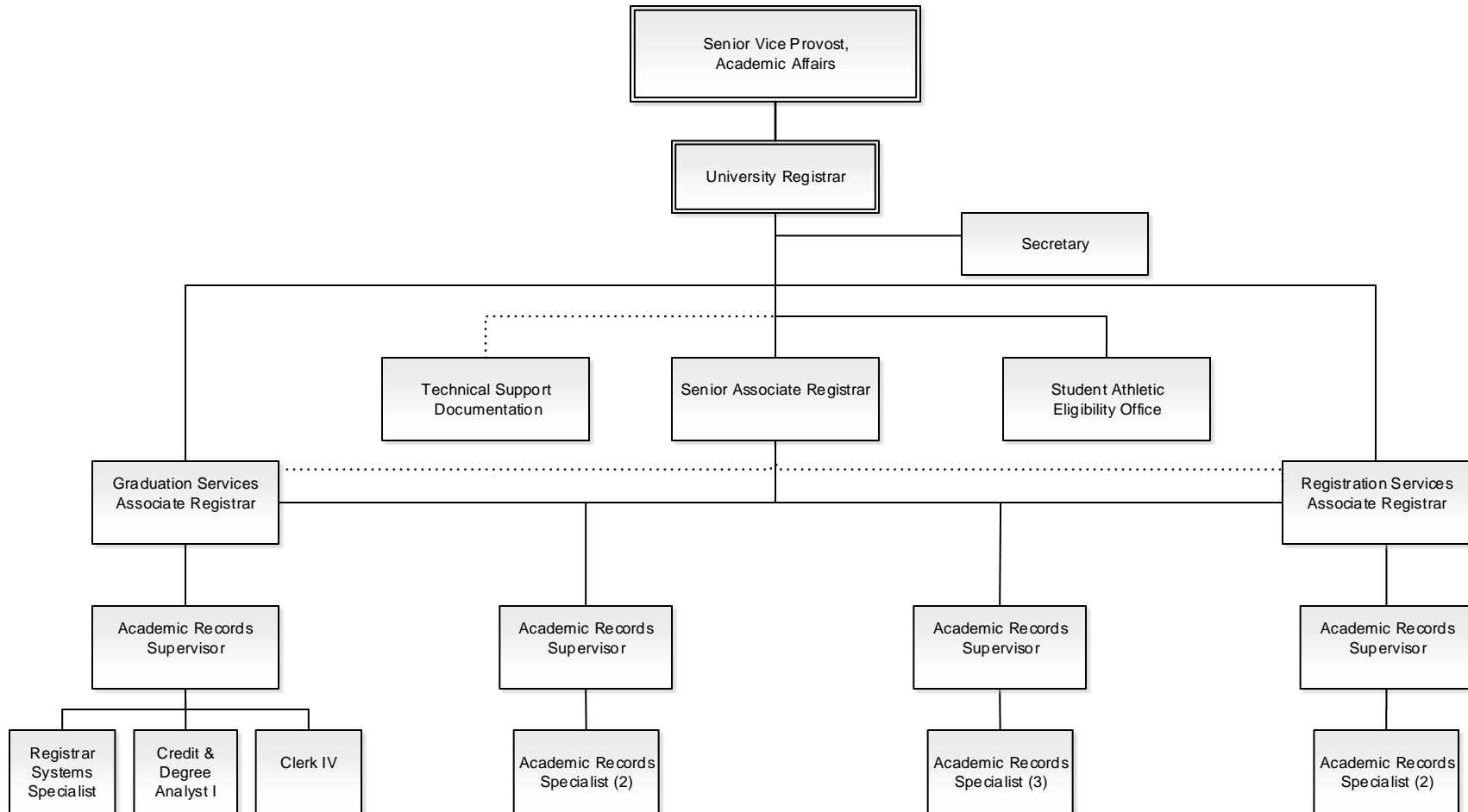
---



# Division of Academic Affairs Global USA

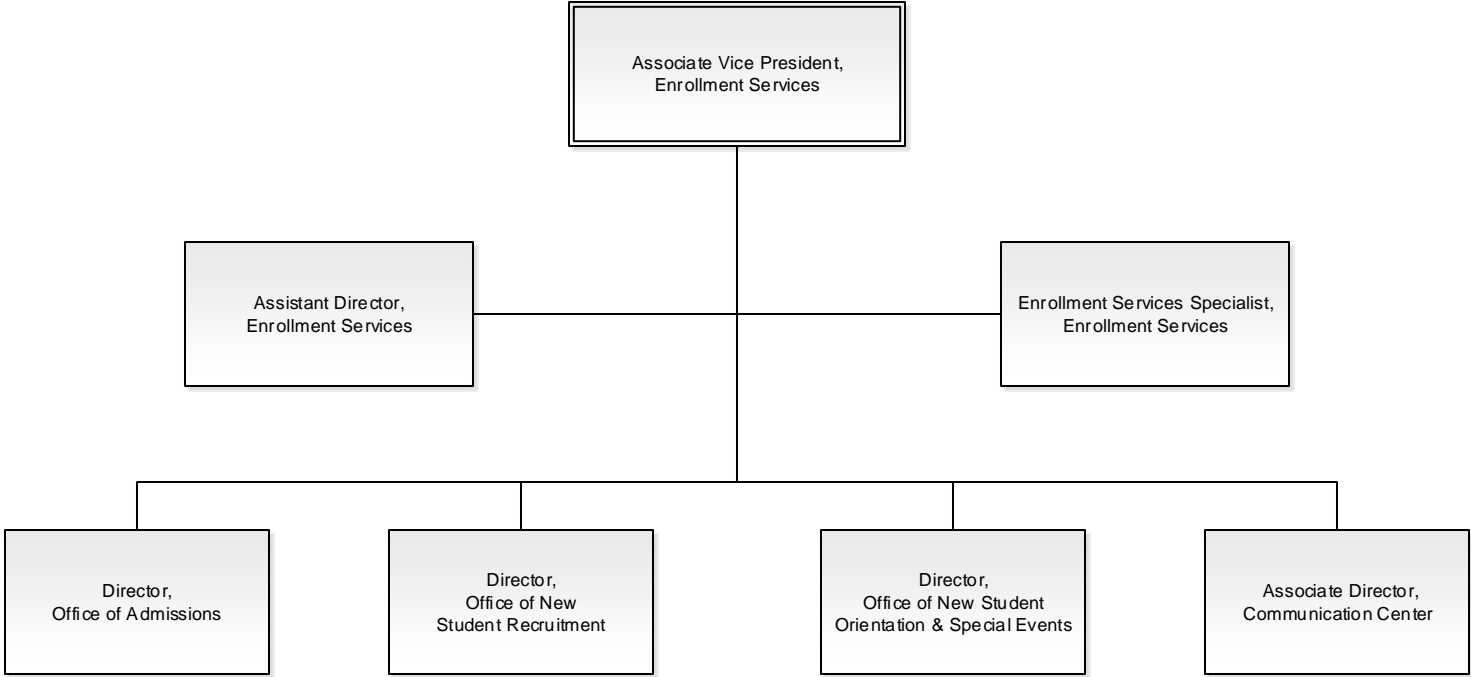


# Division of Academic Affairs Office of the Registrar

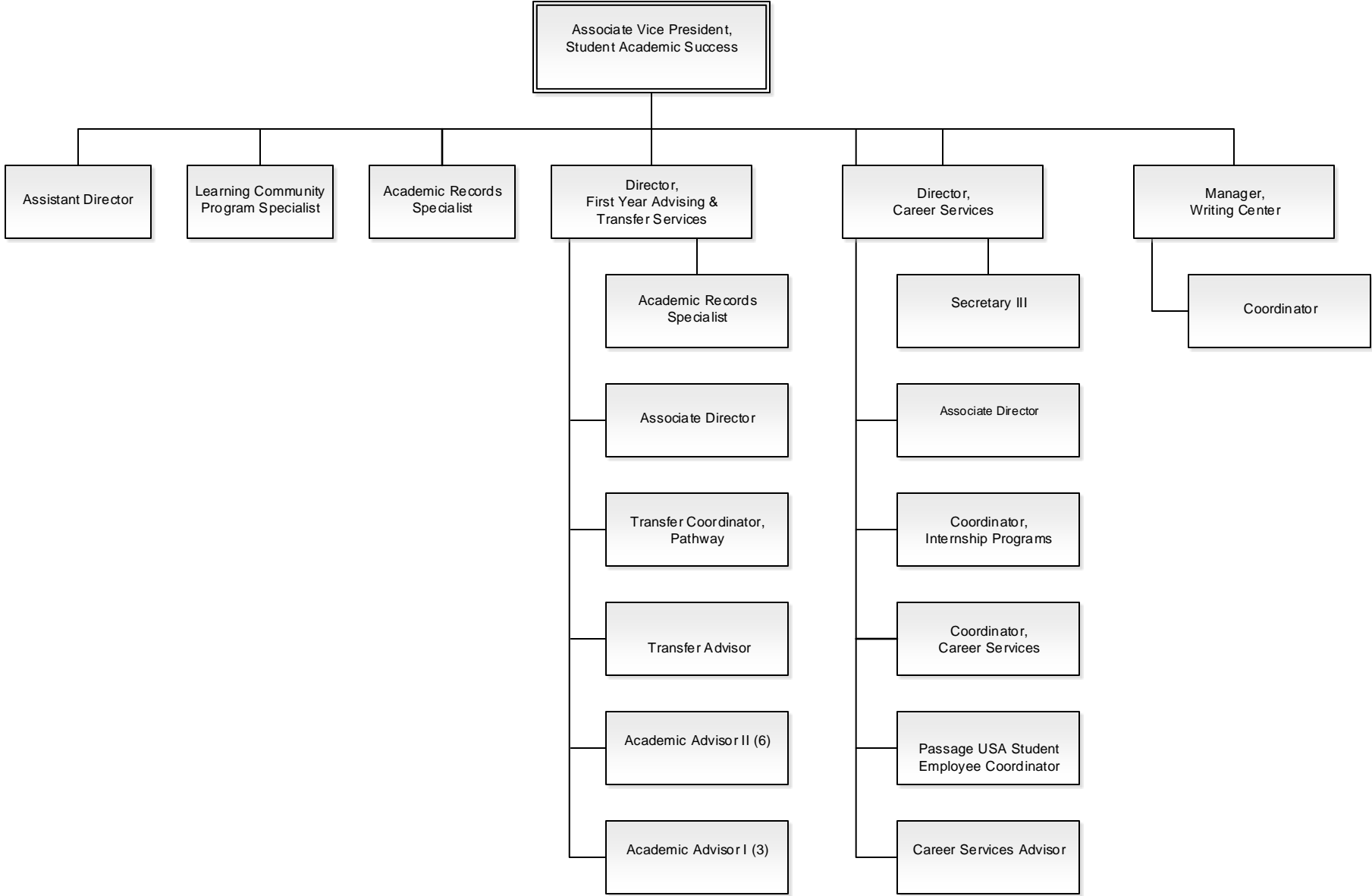


**Division of Academic Affairs  
Enrollment Services**

---



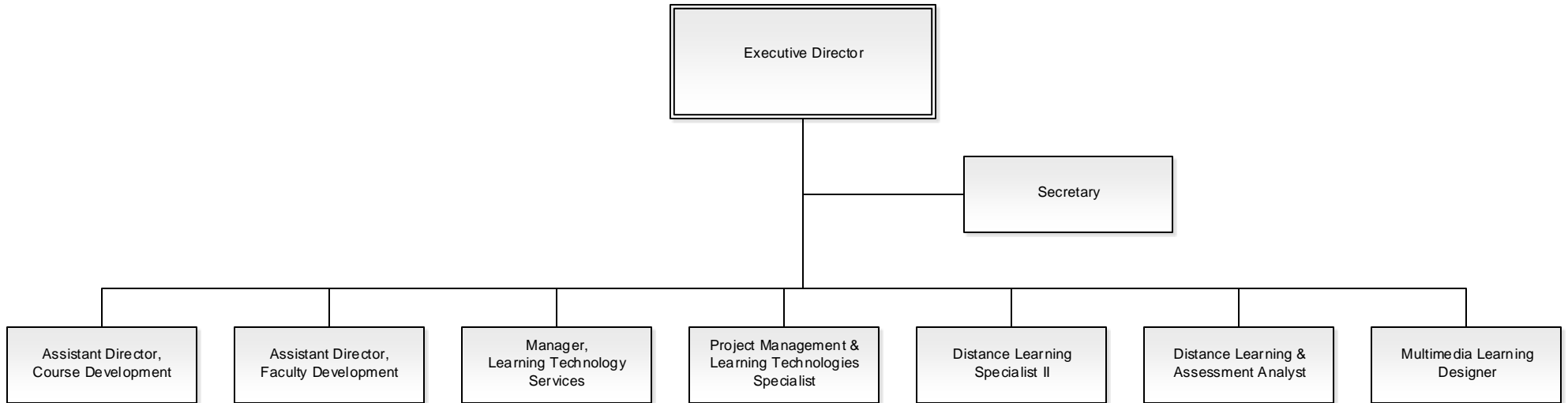
**Division of Academic Affairs  
Student Academic Success**





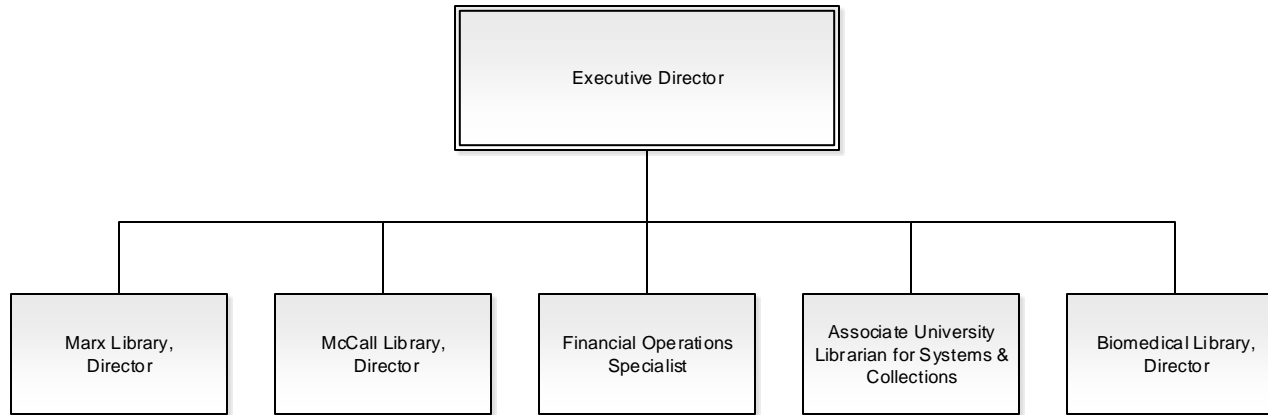
**Division of Academic Affairs  
Innovation in Learning Center & USAonline**

---



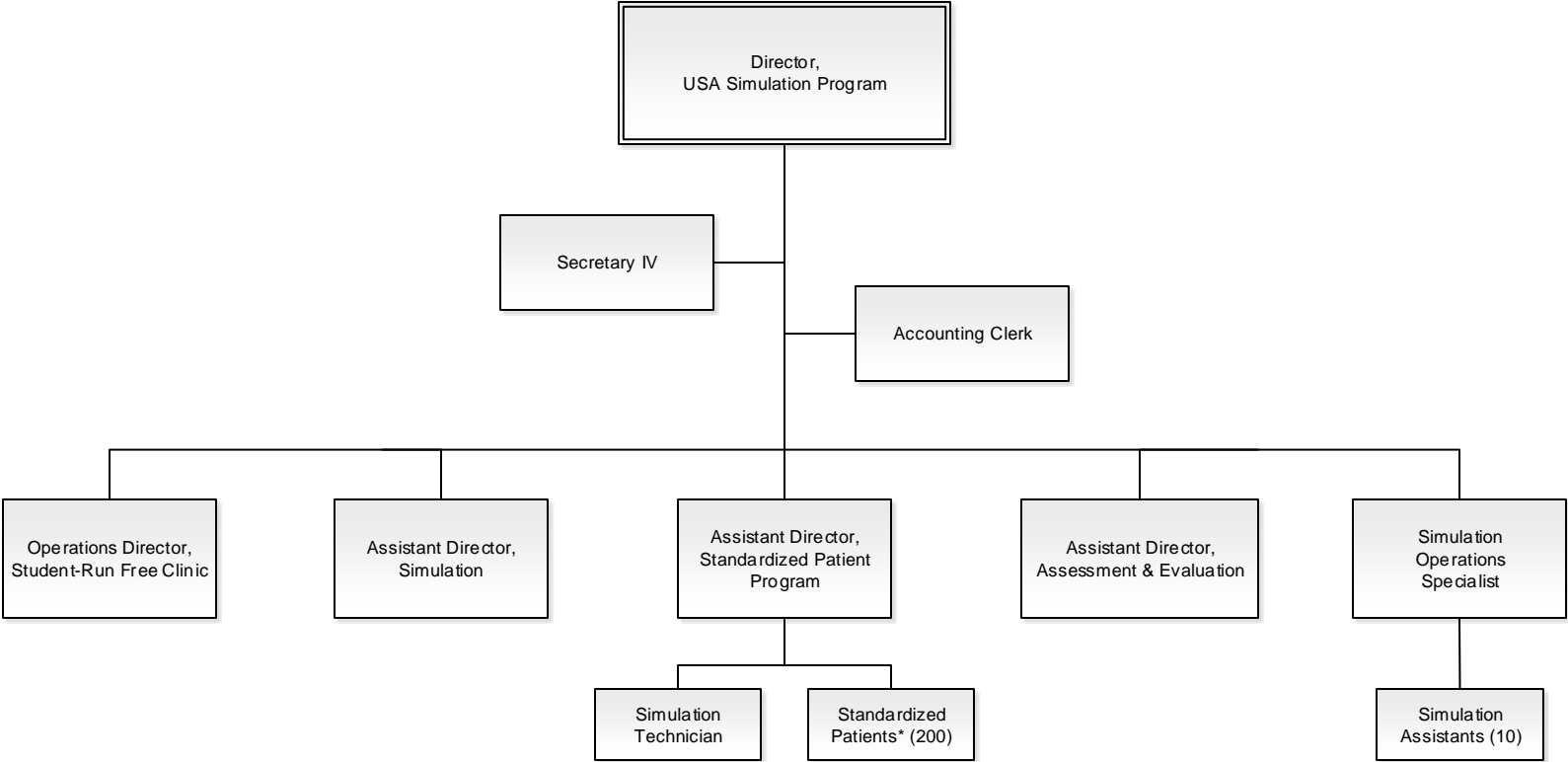
**Division of Academic Affairs  
University Libraries**

---



# Division of Academic Affairs Simulation Program

---



\*Standardized Patients are contract hires and fluctuate in numbers based on programmatic needs.