

2022

SOUTH  
BOUND



NEW STUDENT ORIENTATION / FALL



UNIVERSITY OF  
SOUTH ALABAMA

# CONTENTS

<b>PRESIDENT'S MESSAGE</b>	2	Academic Policies & Procedures	28
<b>SECTION 1</b>		Office of the Registrar	30
NEED TO KNOW	3	Paying for College	32
Timeline	4	Scholarship Guidelines	34
Important Dates	5	FERPA Release	35
<b>SECTION 2</b>		Logins	36
CAMPUS LIVING	7	PAWS	
USA Housing	8	USAonline/Canvas	
Contract Information	9	Student Health Information	37
USA Dining	10	Transfer Student Success Guide	38
Transportation	11	Frequently Asked Questions	39
Parking Permits & Zones	12	Contacts	41
<b>SECTION 3</b>		Alumni	43
INVOLVEMENT	13	Campus Map	44
Student Organizations	14	Orientation Staff	45
<b>SECTION 4</b>			
RESOURCES & SERVICES	18		
Campus Safety	19		
Student Support	20		
International Education & Study Abroad	21		
Student Academic Success	23		
Veteran Affairs	24		
The Center for Educational Accessibility & Disability Resources	25		
Math Placement	26		





# DEAR STUDENTS

A MESSAGE FROM USA PRESIDENT JO BONNER



Welcome to our Jaguar Family,

This is an exciting time to attend the University of South Alabama, and we are honored that you chose South as your university. No matter what path brought you here, please know that the entire university community is committed to your educational, social, and professional development. Like you, South is going places.

Consider SouthBound just the beginning of us rolling out the welcome mat. It's an introduction to your new home. This is a good time to learn about campus living, from getting to class to getting a meal plan. You'll want to find out where to live and park, and who's going to welcome you on Day 1.

Discover how to get involved in some of the more than 200 campus organizations, from special-interest clubs and student government to Greek, religious and civic organizations. South has something for everyone! Find out all the campus resources available to you, including Student Academic Success, The Center for Educational Accessibility & Disability Resources, Financial Aid and Scholarship Services. We are proud to have helped you get here, and our support continues after your arrival all the way through graduation.

We hope the information provided during orientation will aid in your success at the university. I urge you to ask questions, get involved and take advantage of all that South has to offer. Finally, please don't hesitate to let us know how we can help make your college experience all that you imagine.

Go Jags!

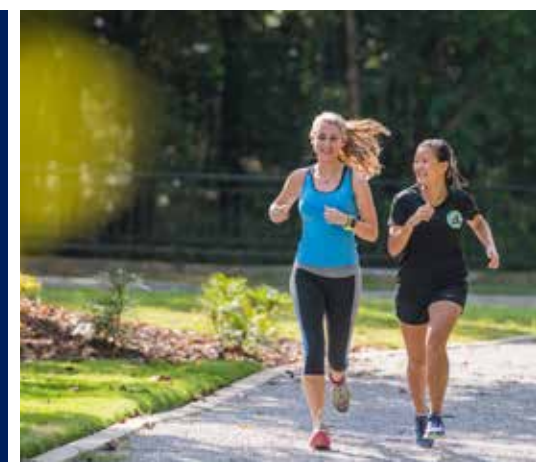
Jo Bonner, President  
University of South Alabama



# NEED TO KNOW



## SECTION 1





# TIMELINE

1

## REVIEW THE ADMITTED STUDENT CHECKLIST

The Checklist for Admitted Students can be found at [southalabama.edu/orientation](https://southalabama.edu/orientation). If you need help completing the steps, feel free to reach out to an Orientation Leader via email at [southbound@southalabama.edu](mailto:southbound@southalabama.edu). Alternatively, you can contact the appropriate office for assistance.

2

## MEET WITH AN ADVISOR & REGISTER FOR CLASSES

The Office of Academic Advising and Transfer Services will contact students via JagMail to schedule an in-person or virtual appointment for course registration. You will be added to an online advising course that must be completed prior to your appointment. Your advising appointment can take place before or after your scheduled orientation session and you must attend in order to register for classes.

**NOTE:** Advising and Orientation work independently, but in partnership. This means that after you register for orientation, you are eligible to be advised. In order to prepare for the upcoming semester, the following items need to be completed:

- All advising steps and attendance at your advising appointment
- Attendance at your scheduled orientation session and online course completion

3

## ACCEPT YOUR ORIENTATION CANVAS COURSE INVITATION

**7-10 BUSINESS DAYS** prior to your scheduled orientation session, a Canvas course invite will be sent to your JagMail. USAOnline is a learning management system (LMS) and is powered by Canvas. It is a user-friendly platform, where Jaguars learn, share, and communicate. Please accept your orientation course immediately. You will need to complete all the modules before attending your orientation session.

4

## START ORIENTATION CANVAS MODULES & CHECK ANNOUNCEMENTS

**BEFORE your scheduled Orientation date**, complete your Canvas modules. You will be invited to the course 7-10 days prior to your session. If you have questions, you can contact an Orientation Leader via email at [southbound@southalabama.edu](mailto:southbound@southalabama.edu).

**NOTE:** Orientation is two parts - the orientation Canvas modules and the scheduled orientation session.

5

## ATTEND SCHEDULED ORIENTATION

**THE DAY OF** your scheduled Orientation, you will meet with your Orientation Leaders, connect with other incoming Jags, and get additional information you need prior to starting classes. Directions for attending your session will be sent in a reminder email. You will receive this email no later than 48 hours prior to your session.

6

## STAY ENGAGED!

We're excited to see you on campus this Summer! In the meantime, if you have any questions prior to starting your session, don't be afraid to reach out to us. We are here to help! We also encourage you to check out our engagement page at [southalabama.edu/orientation](https://southalabama.edu/orientation) to find out about other engagement opportunities.

IF YOU HAVE ANY QUESTIONS ABOUT ORIENTATION,  
EMAIL US AT [SOUTHBOUND@SOUTHALABAMA.EDU](mailto:southbound@southalabama.edu)

# IMPORTANT DATES

## **FALL TERM 2022**

100% of fall balance* due	Aug. 10
All registration schedules released if 100% of balance* is not paid or participation in payment plan	Aug. 11
Residence halls open	Aug. 13
Convocation	Aug. 15
<b>Classes Begin</b>	<b>Aug. 16</b>
100% refund period begins on dropped classes and complete withdrawals	Aug. 16
Late registration begins	Aug. 16
Late registration ends at 10:00pm	Aug. 22
Late registration 100% balance* due	Aug. 22
Last day to add	Aug. 22
Financial Aid/Scholarship Bookstore charges end	Aug. 22
100% refund period on dropped classes and complete withdrawals ends at 10:00pm	Aug. 23
All late registration schedules released if 100% balance is not paid or participation in payment plan	Aug. 23
Last day to drop without a WD	Aug. 23
50% refund period begins on dropped classes and complete withdrawals	Aug. 24
Refunding financial aid credit balances* to students begins	Aug. 26
50% refund period ends. No course withdrawal refunds after this date	Aug. 29
Census date	Aug. 30
<b>Labor Day Holiday for students, faculty, staff, and administration</b>	<b>Sept. 5</b>
Last day for faculty reports on graduate and undergraduate incomplete grades for spring term	Sept. 30
Incomplete grades deadline for summer term	Sept. 30
Last day for spring graduation applications	Sept. 30
Mid-term grades posted	Oct. 5
<b>Fall break for students (includes weekend classes)</b>	<b>Oct. 6 - Oct. 9</b>
Time tickets posted for spring	Oct. 10
First submission deadline: theses/dissertations due in the Office of the Graduate Dean by 5pm.	Oct. 17
Spring registration for continuing students	Oct. 24
Last day to drop or withdraw by 11:59pm	Oct. 28
Spring registration for new undergraduate students begins	Nov. 8
Final deadline: Theses/dissertations due in the Office of the Graduate Dean by 5pm	Nov. 14
<b>Thanksgiving Holiday for students begins at 5pm (Includes weekend classes)</b>	<b>Nov. 22 - Nov. 25</b>
Spring registration for new graduate students	Nov. 28
Last day of classes	Dec. 2
Financial Aid/Scholarship Bookstore charges begin	Dec. 5

\*Balance includes all current term charges for tuition, fees, housing, and dining.

# IMPORTANT DATES

## **FALL TERM 2022 continued..**

Final examinations	Dec. 5 - Dec. 8
Residence halls close	Dec. 9
<b>Commencement Weekend</b>	<b>Dec. 9 - Dec. 10</b>
Final grades posted	Dec. 13

*\*Balance includes all current term charges for tuition, fees, housing, and dining.*







# CAMPUS LIVING

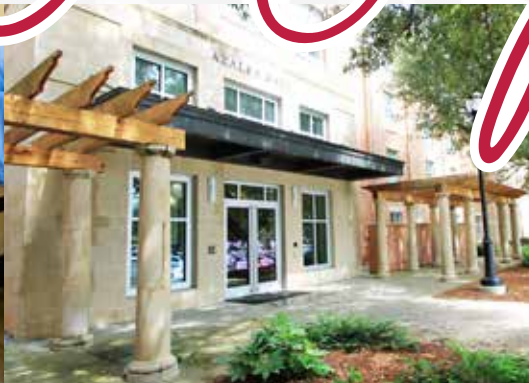






UNIVERSITY OF SOUTH ALABAMA  
HOUSING

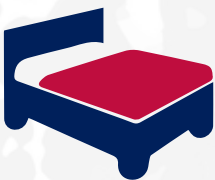
# Live On Campus!



## USA Housing offers the best student living experience!

- No need to commute • Steps away from Hancock Whitney Stadium •
- All-inclusive living with utilities covered – cable, wireless internet, unlimited laundry, and more • Ease of access to campus resources such as the Fresh Food Co., Rec Center, Marx Library, & the Student Center •
- 24/7 support and maintenance staff • Flexible payment options •
- Live in the heart of #JagNation

## EXPERIENCE WHERE YOU LIVE!



### Multiple room types available!

Private rooms, rooms for 2, suites, studio apartments, 2 bedroom apartments, and more! Each room also has its own bathroom.



### First-Year Communities

Azalea Hall, Camellia Hall, & Epsilon

### Upperclass Communities

Stokes Hall, Beta/Gamma, Delta, & Fraternity & Sorority Life

APPLY ONLINE at [SouthAlabama.edu/MyUSAHousing](https://SouthAlabama.edu/MyUSAHousing)



### **How do I apply?**

Visit [SouthAlabama.edu/MyUSAHousing](https://SouthAlabama.edu/MyUSAHousing) to complete a housing contract.



### **When should I apply?**

Once admitted, students should apply for housing as soon as possible. Room selection participation and assignments are made in order of contract completion date.



### **I want to see a room.**

Our rooms are exactly what you are looking for! But don't just take our word for it, visit our website and follow us on social media to view 3D floor plans, photos, video tours, and more!



**APPLY TODAY!**  
**ACADEMIC YEAR 2022-2023 CONTRACTS ARE OPEN!**

#### **HAVE QUESTIONS?**

Visit [SouthAlabama.edu/Housing](https://SouthAlabama.edu/Housing) OR call 251-341-HOME(4663)

**FOLLOW US ON FACEBOOK & INSTAGRAM: @SouthALResLife**

# USA DINING

## Residential Meal Plans

Living where you learn means that eventually, you'll need to eat. With the dining experience at South you'll never have to worry! The meal plan options for residential students offer quality food at a discounted price. The Dining Hall is conveniently located within the residential area. Visit the Meal Plan section of USA Housing's Rates page for detailed meal plan descriptions, requirements, and cost. All students living in University housing are required to have a meal plan.

## Commuter Meal Plans

Other meal plan options are available for faculty, staff, and commuter students. These plans provide a discounted price over purchasing individual meals on each visit to the dining facility. In addition, faculty, staff, residential and commuter students can purchase Dining Dollars to use at any food service location on campus. Dining Dollars are added to the JagCard and are deducted each time there is a food service transaction. Visit [www.southalabamadinig.com](http://www.southalabamadinig.com) and click on the Meal Plan tab to review detailed meal plan descriptions and cost.

## Meals

The number of allotted meals for your meal plan is available at the Fresh Food Company, South Alabama's all-you-care-to-eat dining location. The Fresh Food Company is located on the 2nd floor of the Dining Hall adjacent to the residential communities.

## Bonus Bucks and Dining Dollars

Bonus Bucks and Dining Dollars supplement your meal plan and can be used as payment at all USA Dining locations. Unused Bonus Bucks roll from fall to spring but expire at the end of the spring semester. Dining Dollars work just like Bonus Bucks, but are added separately and never expire.

## How it Works

Once you have a meal plan, your student ID works like a debit card. Just swipe your card and the amount is deducted each time there is a food service transaction with your balance on every receipt.

## Dining Locations

### Delta Deli

Delta Commons

### Einstein Brothers Bagels

Allied Health Building (HAHN)

### Fresh Food Company

Residential area, Dining Hall 2nd floor

### Fuel By Island Oasis

Student Recreation Center

### Greens To Go

Student Center

### P.O.D. Express

Student Center, Humanities Bldg (HUMB), and Mitchell College of Business (MCOB)

### Shelby Hall Cafe

Shelby Hall

### Starbucks

Marx Library

### Student Center Food Court

Chick-fil-A, Moe's Southwest Grill, Panda Express, and Prowler Bowls. Located on the 2nd floor of the Student Center



# TRANSPORTATION



## JagTran Routes

### RESIDENTIAL SIDE OF CAMPUS

#### Blue Route

All residential communities, Central House on Stadium, the front of the Humanities Building, the front of the Student Center, the Recreation Center, and Jaguar Drive.

#### Green Route

All residential communities, Central House on Stadium, the back side of the Humanities Building, Marx Library, and the back side of the Student Center.

### ACADEMIC SIDE OF CAMPUS

#### Red Route

Back of the Student Center, USA College of Medicine, Health Sciences Building, and Visitor Parking on Clinic Drive.

#### Yellow Route

Front of the Student Center, front of the Humanities Building, Mitchell Center, Mitchell College of Business, Shelby Hall, and UCOM.

#### Orange Route

Mitchell College of Business, Humanities, Academic Services Center, Student Center, Shelby Hall, Administrative Building parking lot, MSPB, Marx Library, and all four Alpha Halls.

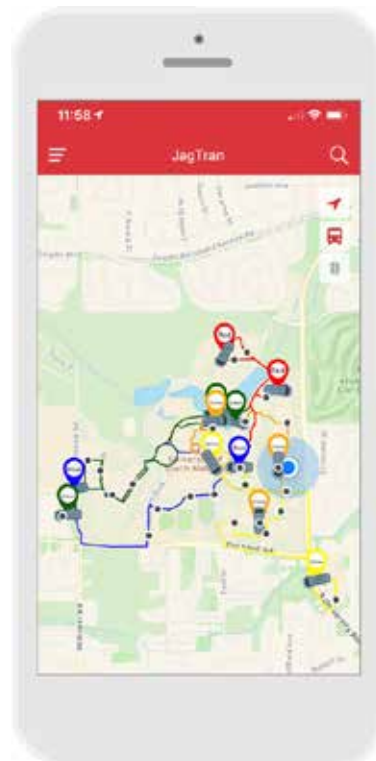
## JagTran

The University of South Alabama's campus transportation system, JagTran, was created to provide easy, safe and efficient transportation for USA students, employees, and visitors. JagTran vehicles run continuously throughout the day, starting at 7 a.m. (see our JagTran Tracker). No tickets, money, or reservations are needed.

## Get the JagTran Tracker App!

DoubleMap allows you to track your bus with live location updates and ETAs so you can get where you need to be.

Search *DoubleMap* in the App Store or Google Play.



# Parking

All vehicles operated on the USA campus must be properly registered and display a current USA parking permit; twenty-four (24) hours a day, and seven (7) days a week. Students must register online for a parking permit. Zone parking is in effect Monday – Friday, 7:00 a.m. to 3:45 p.m. during fall and spring semesters. After 3:45 p.m., vehicles with any valid USA parking permit may park in any student parking space on campus; however, a current permit must be displayed in the vehicle.

## How to Choose a Permit

### Commuter Students

Students living off-campus will choose a zone to park for the entire academic year (fall-summer semesters). They should choose a zone most convenient to their classes and activities taking place before 3:45 p.m.

### Residential Students

All on-campus resident students, including sorority, fraternity, and Central House\* residents, must obtain a Resident zone parking permit with the exception of Beta/Gamma residents who must obtain a Beta/Gamma permit. Obtaining a permit other than the allowed permit will result in disciplinary action and possible vehicle immobilization.

*\*Central House residents who bring a vehicle to campus must order a residential permit online. This is in addition to the window decal provided by Central House management.*

Student parking permits are obtained online at [SouthAlabama.edu/departments/parkingservices](https://SouthAlabama.edu/departments/parkingservices).

## Parking Zones

**North Zone** permits are only valid in North Chemistry, North Humanities, and the Library parking lots during the time of zone enforcement.

**Residential Zone** permits are for students who reside in Camellia Hall, Epsilon, Delta, Azalea Hall, Stokes Hall, Greek Houses, and Central House on Stadium.

**South Zone** permits are only valid in Laidlaw Performing Arts, Mitchell College of Business, Shelby Hall, University Commons, Health, Kinesiology and Sport (HKS), and Gamma parking lots during the time of zone enforcement.

**Central Zone** permits are only valid in South Chemistry, South Humanities, Science Laboratory, Communications, Gamma (not on Stadium Blvd), Student Center, and the Student Center parking lots during the time of zone enforcement.

**Beta/Gamma Zone** permits are for students who reside in Beta/Gamma and allows parking in Gamma Lot and along both sides of Jaguar Blvd. only.

**East Zone** permits are only valid in Alpha Hall East, Alpha Hall South, Biomedical Library, Health Sciences, Mathematical Sciences and Physics Building (MSPB), College of Medicine, and Visual Arts parking lots during the time of zone enforcement.





INVOLVEMENT



SECTION  
**3**





OVER 200 REGISTERED

# STUDENT ORGANIZATIONS

**Between honor societies, professional organizations, fraternities, sororities, social clubs, religious groups, and other organizations, we have something for everyone! If you want to get involved, we can find an organization to meet your needs. If you need additional information, call (251) 460-7003 or come by the Office of Student Activities located on the 1st floor of the Student Center.**

3D Print Club  
Abeneefoo Kuo Honor Society - ABK  
Active Minds  
ALPASS - Alabama Physician Assistant Student Society  
Alpha Epsilon Delta  
Alpha Gamma Delta  
Alpha Kappa Alpha  
Alpha Omicron Pi  
Alpha Phi Alpha  
Alpha Tau Omega  
American Institute of Aeronautics and Astronautics - AIAA  
American Institute of Chemical Engineers - AIChE  
American Chemical Student Society  
American Marketing Association  
American Medical Women's Association  
American Society of Biochemistry and Molecular Biology  
American Society of Civil Engineers - ASCE  
American Society of Mechanical Engineers - ASME  
Anesthesiology Interest Group  
Animal Rights Alliance  
Animation Association, University of South Alabama  
Association of Computing Machinery - ACM  
Baptist Campus Ministries  
Bangladesh Student Association  
Beta Alpha Psi  
Bioethics Club  
Biology Student Association  
Biology Graduate Association  
Biomedical Engineering Society - BEMS  
Biomedical Sciences Society - BMD  
Black Student Union - BSU (formerly African American Student Assoc.)  
Brain and Behavioral Sciences Graduate Student Organization  
Campus Outreach  
Catholic Student Association  
Chess Club, USACOM  
Chi Alpha Christian Fellowship  
Chi Omega  
Christian Medical & Dental Association  
Circle Kiwanis International (also known as Circle K)  
Civil Engineering Honor Society  
Clinical and Counseling Psychology Grad Student Org. - CCP GSO  
Culinary and Lifestyle Medicine Interest Group  
College of Medicine, 1st year  
College of Medicine, 2nd year  
College of Medicine, 3rd year  
College Panhellenic Council  
College Republicans  
Collegiate Entrepreneurs Organization  
Cottage Hill at South  
Collegiate 100  
Cricket Club, USA  
Criminal Justice Association, South Alabama  
Dance Marathon  
Dayspring U  
DayZero Cyber Competition Club  
Delight College Women's Ministry  
Delta Sigma Theta Sorority, Inc.  
Disc Golf Club, University of South Alabama  
Diamond Girls  
Donor to Diner  
Emergency Medicine Interest Group  
Endurance Athletics Club, USACOM  
Esports, USA  
Eta Kappa Nu  
Family Medicine Interest Group  
Filipino Cultural Society (formerly Pinoy South Society)  
Financial Management Association  
Friends of Internationals at USA  
Future PharmD.  
Game Development Club  
Geography Club  
Gerontology Club  
Glass Club, USA  
Global Health Collaborative  
Graduate Student Association  
GRITS/ITE - Intelligent & Transportation Engineers  
Green Jags, USA (Sustainability Council)  
Hallyu, USA  
Health and Physical Education Majors Club  
History Club  
HOSA Future Health Professionals  
Honors College Association  
Improv USA  
INCOSE, USA Jaguar Division  
Independent Music Collective  
Indian Student Association (ISA)  
Institute of Electronics and Electrical Engineers - IEE Student Chapter  
Instructional Design & Development Graduate Association  
Interfraternity Council -IFC  
Internal Medicine Interest Group  
Jags Against Trafficking

Jaguar Productions  
Jaguar Women in Technology - J WIT  
Kappa Delta  
Kappa Sigma  
Latin American Student Organization (LASO)  
Leadership in Medicine  
Marine Science Graduate Student Organization  
Marine Science Student Association  
Mathematics & Statistics Club  
Medical Spanish Interest Group  
Meditation & Mindfulness Club  
MedPride and Allies  
Meteorology Club  
Military Medicine Interest Group  
Minority Association of Premedical Students  
Mortar Board Honor Society  
Muslim Student Association  
Muslims in Medicine  
National PanHellenic Council - NPHC  
National Society of Black Engineers  
National Society of Collegiate Scholars  
National Society of Leadership and Success - NSLS  
The National Student Speech Language and Hearing Assoc. -  
NSSLHA  
Native American Student Association  
Neurosurgery Interest Group  
Ob/Gyn Interest Group  
Omega Chi Epsilon, National Chemical Engineering Honor  
Society  
Omega Psi Phi  
Oncology Interest Group  
Oracle Fine Arts Review  
Orthopaedic Surgery Interest Group  
Phi Beta Sigma  
Phi Boota roota  
Phi Kappa Phi Honor Society  
Phi Kappa Sigma  
Phi Mu Alpha Sinfonia Fraternity of America  
Phi Mu  
Phi Sigma Iota  
Pi Kappa Phi  
Pi Theta Epsilon  
Political Science Club  
Pre-Dental Society, University of South Alabama  
Pre-Law Society, USA  
Pre-Occupational Therapy Club  
Pre-Physical Therapy Association  
Pre-Physician Assistant Society  
Psi Chi  
PsychSIGN  
Public Administration Club  
Public Health Interest Group, USACOM  
Radiological Sciences Club  
Ransom  
Recreational Therapy Association  
Reformed University Fellowship  
Rock Climbing Club  
Sigma Alpha Epsilon Fraternity  
Sigma Alpha Iota  
Sigma Gamma Rho  
Soccer Club  
Society for American Military Engineers

Society for Sustainable Engineering  
Society of Automotive Engineers  
Society of Healthcare Management Students  
Society of Human Resource Management  
Society of Women Engineers  
South Alabama Campus Civitan  
South Alabama Student Occupational Therapy Assoc. - SASOTA  
Southerners  
SouthFit Club  
Spectrum  
Spikeball Club  
Steel Band Club, USA  
Student Academy of Audiology  
Student Anthropology Society  
Student Assembly, USA College of Medicine Student  
Government Association  
Student History Society  
Student National Medical Association Student Nurses  
Association, USA  
Student Run Free Clinic  
Student Veterans Association (JagVets)  
Students Interested in Chinese Culture  
Surgery Interest Group  
Table Tennis Club  
Tau Beta Pi  
Therapeutic Recreation Association Ultrasound Interest Group -  
(USIG)  
Vietnamese Student Association  
Wesley Foundation - South Wesley  
Wilderness Medicine Interest Group  
Women of Excellence  
Women's Pre-Health Club  
Zeta Phi Beta

*Updated Spring 2022*



## Student Government Association

The Student Government Association is the voice and governing body of the students. All South Alabama students are members of the SGA and are encouraged to get involved. The purpose of SGA is to protect and advance the students' interests as well as to promote the welfare of the students by providing student services. The SGA operates as a constitutional democracy and is composed of three branches: the Executive Branch, the Judicial Branch and the Legislative Branch. Meetings are open to all students, faculty, and staff at the University of South Alabama. For more information, visit the SGA office, which is located in the Student Center, Suite 214. For questions, contact the SGA office at (251) 460-7191 or by email at [sga@southalabama.edu](mailto:sga@southalabama.edu).

## Jaguar Productions

Jaguar Productions is the official University of South Alabama Activities Board and is dedicated to providing entertaining and educational events and programs for USA students. Jaguar Productions plans over 30 events a semester including Jags After Dark, comedy shows, coffee house music events, karaoke nights, movies, special events, and much more! Join a committee to help plan events, meet new people, form lasting friendships, and have a once-in-a-lifetime experience. Jaguar Productions also sells discounted movie, symphony, and ballet tickets at our window. Visit the Jaguar Productions office on the 1st floor of the Student Center or call (251) 460-7144.

## University Choirs

All students are invited to sing in one of the University Choirs. Membership is open to all students of the University, both full- and part-time. Singing is an opportunity to meet new people, relax from the hectic grind of classes, and express yourself. Various styles of music are performed, and a concert is given each semester. Be part of an exciting and dynamic group of people who enjoy great music. For more information, call the Music Department at (251) 460-6136.

## Greek Life

The Office of Greek Life is located in the Student Center and is the headquarters for Inter-Fraternity, NPHC, and Panhellenic Councils. These three organizations are the governing bodies for the 22 Greek life organizations at the University of South Alabama. These organizations sponsor informal recruitment and intake periods during which bids are extended to new members. Fraternities and sororities have much to offer incoming students — a group of supportive friends, excellent scholastic resources, campus events and intramural sports, service projects and philanthropies, a chance to develop leadership skills, and career opportunities through interaction with alumni. Please call the Office of Greek Life at (251) 460-7003 for more information.





## Student Newspaper

The Vanguard is the official student newspaper of the University of South Alabama, servicing the University's student, staff, faculty and campus community since 1965. The Vanguard is a student-produced newspaper, designed to provide a learning environment as well as to inform the public of campus news and issues. New articles are published online weekly.

## Army ROTC and Air Force ROTC

The United States Army and United States Air Force operate Reserve Officer Training Corps (ROTC) programs on the USA campus. The Department of Military Science (Army ROTC) and the Department of Aerospace Studies (Air Force ROTC) offer introductory courses to freshmen and sophomores designed to give general information about each service. Some courses are free of charge and can count in place of physical education credit. If students are qualified and desire to continue, they may compete for selection to enter the junior and senior years of the ROTC program. Military Science and Air Force Studies are accredited fields of minor study at the University of South Alabama. Although you may usually choose whatever major course of study is desired, you should contact ROTC enrollment officers to discuss which majors are in most demand by each service. Successful completion of the ROTC program leads to a commission as a second lieutenant.

## Campus Recreation

The Student Recreation Center at the University of South Alabama is a state-of-the-art, 116,000-square-foot facility, a focal point for campus life. Opened fall semester 2009, it houses multipurpose weight rooms containing both machines and free weights, heated swimming pools, a spa, saunas, racquetball courts, fitness studios for activities such as aerobic classes and martial arts, a rock climbing wall, a dining facility featuring smoothies and other healthy refreshments, and a children's play area. Students simply present their Jag Card for admission into the Student Recreation Center.

The Department of Campus Recreation invites all students to become involved in its programs. In addition to open recreation, Campus Recreation sponsors fitness classes, sports clubs, outdoor recreation, and intramurals.

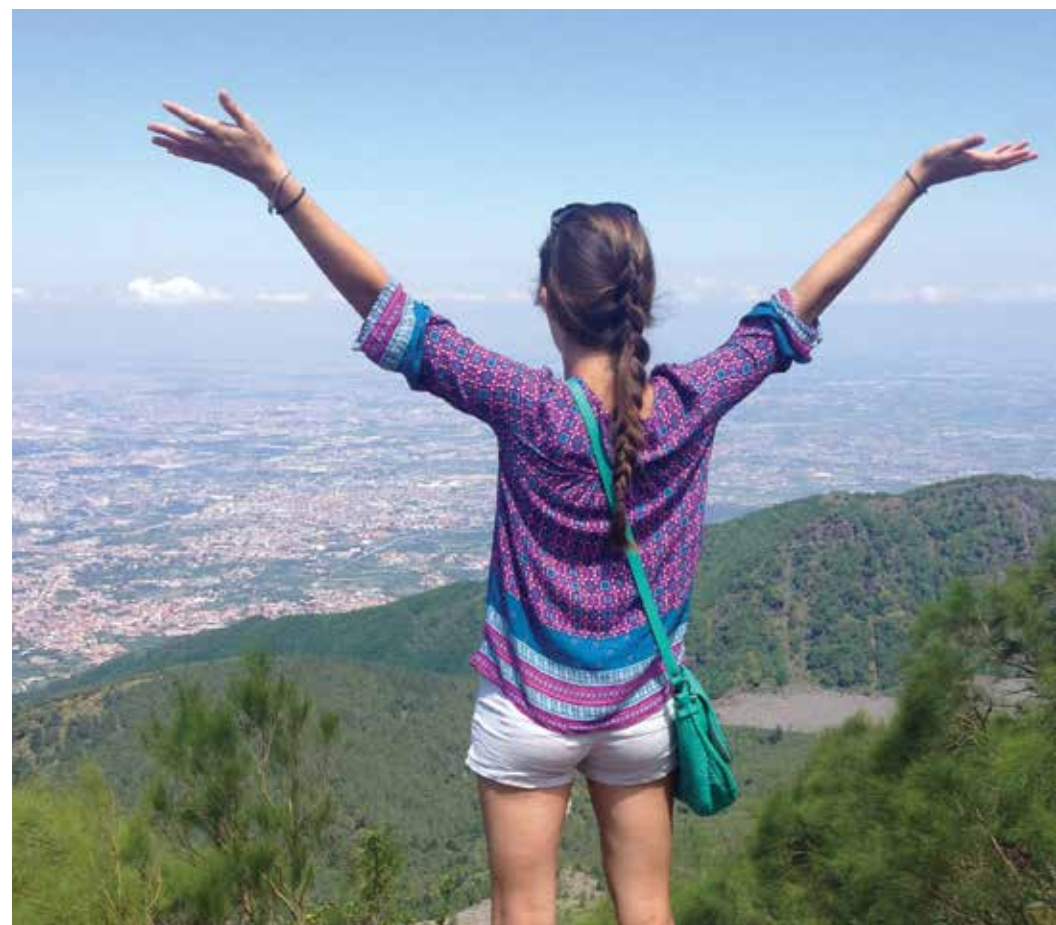
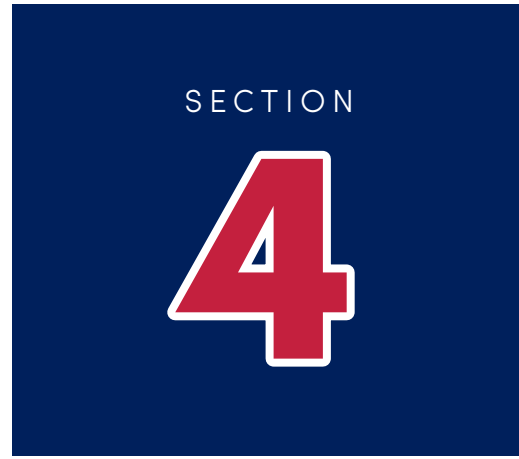
## Multicultural Student Affairs

The Office of Multicultural Student Affairs is committed to building a sense of community through special programs, mentoring, relationships, and encouraging membership in majority groups for minority students. This office works to aid retention and to assist in leadership development for students. For questions, call the Office of Multicultural Student Affairs at (251) 460-6895.





## RESOURCES & SERVICES



# CAMPUS SAFETY

## University Police

The University of South Alabama Police Department exists to meet the unique law enforcement needs of the University community. The Department is led by a Chief of Police and reports to the Vice President of Student Affairs. The department is comprised of approximately 29 sworn law enforcement officers, six civilian support staff and several student assistants. All sworn University Police Officers are state law enforcement officers with full arrest powers as provided by Alabama State Law (Title 16-55-10) and have been certified by the Alabama Peace Officers Standards and Training Commission.

The Department's primary mission is to provide a safe environment so the University can fulfill its educational purpose. The department offers crime prevention programs throughout the year and is responsible for enforcing all state criminal and traffic laws, as well as the policies of the institution.

Everyone plays a role in safeguarding the campus community. Please report all crimes or suspicious activity to the University Police immediately at (251) 460-6312, 24/7. You can also file a report in person at Police Headquarters which is centrally located in the residential area of campus, in the Beta/Gamma Commons Bldg. at 250 Jaguar Blvd. and is staffed 365 days a year.

Learn about crime prevention programs, fire safety, emergency/evacuation procedures and relevant campus safety policies by reading the Annual Security and Fire Safety Report. This report, which also contains crime and fire statistics, is updated annually by October 1st in accordance with Federal Law. You can read and print the electronic version of this report at [SouthAlabama.edu/departments/police/](http://SouthAlabama.edu/departments/police/). You may also request a paper copy at the University Police Department Headquarters.

## LiveSafe

Designed to prevent crime and enable better incident response, the LiveSafe technology includes an app for smartphone users that is connected to a cloud-based dashboard monitored by campus safety officials. The core features include quick tip submittal via text with picture and video attachments (including the option to stay anonymous), live chat with safety officials, fast access to emergency phone numbers that initiate location tracking when called, and a peer-to-peer tool called SafeWalk that allows friends to watch out for each other through location monitoring and group chat. Additionally, app users can receive important broadcast notifications sent by University police.

You can download LiveSafe for FREE on iPhone or Android devices.





# STUDENT SUPPORT

## Counseling & Testing Services

Our mission is to provide high quality counseling, testing, and consultative services to the university community. We strive to facilitate the academic, emotional, social, and career development of students.

### SERVICES PROVIDED

- Individual and Group counseling
- Support Groups
- Substance Abuse assessment and counseling
- Assisting referrals to community providers
- Outreach educational programs
- Consultation for faculty, staff, and students
- Proctoring of standardized tests
- Resources as needed

### ELIGIBILITY AND COST FOR SERVICES

All currently enrolled USA students are eligible for counseling services. Counseling services are provided free of charge. However, the department does charge fees to students directly for some of the standardized tests that are administered.

### CONFIDENTIALITY

Counseling services are provided confidentially. Information is not divulged to others without a student's consent, unless there are compelling ethical and/or legal reasons for doing so, such as when there is a threat of serious harm to self or others.

## Dean of Students

The Dean of Students Office is a central point for student concerns. The department aims to help make the educational experience of students a meaningful and memorable one. The Dean of Students Office strives to facilitate cooperation among students, faculty, and administrators. It provides direction and works in conjunction with the offices, programs, and services to help ensure the retention, academic progress, and graduation of USA students.

## Student Employment

### WORK-STUDY

The Federal Work-Study Program is a joint effort by the federal government and the University to provide part-time jobs for students who need financial assistance. You may be awarded a federal work-study job as part of your financial aid package. For more information about this program, contact the Office of Financial Aid at (251) 460-6231.

### HANDSHAKE

This modern platform is USA's primary career management system. The platform changes to your needs, pushing out customized information that is relevant and timely based on your career interests, experiences and major. It allows students to search for local part-time, internship, and co-op student employment opportunities, in addition to full-time positions at graduation. Every USA student has access to an account by creating a profile and signing an agreement. Students may access their account at [SouthAlabama.edu/careerservices](https://SouthAlabama.edu/careerservices) to begin searching for employment opportunities. For information about Handshake, visit [SouthAlabama.edu/careerservices](https://SouthAlabama.edu/careerservices).

## Banking

Two 24-hour automatic teller machines (ATMs) serviced by Regions Bank and Hancock Whitney Bank are located on the main campus inside the Student Center. An additional ATM serviced by USA Credit Union is located outside of Meisler Hall. The USA Federal Credit Union is located at 103 Hillcrest Road and offers various financial services to students.

# International Education & Study Abroad

Many students do not realize it, but studying abroad is an option for all USA students, regardless of major or ability to speak a different language. The Study Abroad Office offers more than 800 program options in over 60 countries all over the globe. Students can choose to study abroad during any year, semester, or summer of their college career. The longest programs run for a full academic year and the shortest last one week, so students can go abroad for the amount of time that fits their needs best.

While abroad, students can earn credit towards their degree so their time abroad does not prolong their college experience. Regardless of the country in which they study, students can take classes completely in English. Of course, those looking to begin learning, improving, or mastering a different language are welcome to take classes in foreign languages as well. Service learning and intern opportunities abroad are offered, so students can get real life experience in a cross-cultural setting. Students can travel abroad with USA faculty and students or participate in independent experiences. The Office of International Education and Study Abroad even offers virtual opportunities to meet, learn, and interact with peers and professors all over the world from your home!

The department also has substantial scholarship funds for which study abroad students can apply. Studying abroad is an amazing opportunity to expand students' horizons and stand out to future employers. To learn more, students can drop by the office during walk-in hours (see website), attend a study abroad fair, or contact the office to set up a one-on-one appointment.

## OFFICE OF INTERNATIONAL EDUCATION AND STUDY ABROAD

2300 Meisler Hall

(251) 460-7053

[intledu@southalabama.edu](mailto:intledu@southalabama.edu)

[SouthAlabama.edu/studyabroad](http://SouthAlabama.edu/studyabroad)



UNIVERSITY OF SOUTH ALABAMA  
INTERNATIONAL EDUCATION  
AND STUDY ABROAD







# ACADEMIC SUCCESS

Student Academic Success (SAS) supports the mission of the University by developing, implementing, and assessing initiatives and practices to ensure all students are offered the resources and relationships necessary for high quality learning, academic persistence, and degree completion.

## STUDENT ACADEMIC SUCCESS

Dr. Nicole Carr, Associate Vice President  
Academic Services Center  
111 Student Services Drive, Suite 1304  
Mobile, AL 36688  
(251) 460-7103  
studentsuccess@southalabama.edu

## Academic Advising & Transfer Services

The mission of Academic Advising & Transfer Services is to guide the University's diverse undergraduate population in developing and implementing sound educational plans consistent with students' stated values and academic and career goals. Advisors in Academic Advising & Transfer Services hope to encourage students to become self-directed learners and decision-makers and to help facilitate their transition into their academic programs.

## Pre-Health Programs

Administrators, faculty, and professional staff at South believe that advising is a responsibility and an opportunity for enhancing your undergraduate experience. Graduate health programs are selective, and applying is a very competitive process. Pre-health advisors at South help you understand and navigate requirements by providing resources to assist you in becoming a strong, well-rounded applicant.

Academic Advising & Transfer Services  
1375 Student Services Drive  
Mobile, AL 36688  
(251) 341-4017  
SouthAlabama.edu/academicadvising

## Career Services

Making thoughtful and informed academic major and career decisions can be exciting, yet challenging. The Career Services staff is knowledgeable, enthusiastic, and eager to assist students. They offer career-related services and advising for all students at the University. The staff's goal is to work with students each academic year to help students achieve their personal and professional goals. Come in to meet with a career advisor to discuss academic major and career decisions, prepare for an internship or co-op experience prior to graduation, and begin to practice skills such as resume writing, interviewing, networking, and more. Working with our Career Services staff early and often will make you more competitive for employment and graduate/professional school upon graduation.

Academic Services Center  
111 Student Services Drive, Suite 1370  
(251) 460-6188  
SouthAlabama.edu/careerservices  
careerservices@southalabama.edu

## Center for Academic Excellence

The Center for Academic Excellence's mission is to provide learning resources for all USA students. At the Center for Academic Excellence, we strive to help every student reach their academic goals. Our academic enrichment services are grounded in a growth mindset, and we strongly advocate that students can learn anything with hard work, perseverance, and good study habits. With this in mind, the Center for Academic Excellence offers collaborative learning opportunities in which peers work together to develop knowledge, build skills, and think critically and creatively to solve problems. The Center for Academic Excellence offers individual and small-group peer tutoring for a large variety of general education courses, as well as writing consultations for courses in any discipline. Additionally, the CAE provides workshops, events, and programs aimed at empowering USA students in their coursework and beyond.

Marx Library, Second Floor  
(251) 460-6480  
SouthAlabama.edu/CAE  
cae@southalabama.edu



# VETERAN AFFAIRS

Most military-affiliated students will access federal benefits, state benefits, or a combination of both. For some brief assistance, please see the checklists below.

## Using Federal Benefits

1. Students using the Post 9/11 GI Bill® and Vocational Rehabilitation have the option to have the orientation fee added to their account or be reimbursed by the GI Bill. Email us at [vets@southalabama.edu](mailto:vets@southalabama.edu)
2. Create a file with the OVA and follow the process at <https://www.southAlabama.edu/departments/veteransaffairs/vausingmygibill.html> or scan the QR code using your mobile device.



Create a file with the OVA.

*Note: It could take up to 2 months to receive your Certificate of Eligibility (COE) from the VA. Please plan accordingly!*

3. Certifying your classes for funding. Certification = money.

Complete the Student Request for Certification at <https://www.southalabama.edu/departments/veteransaffairs/varequestforcertification.html> or scan the QR code using your mobile device. Follow the steps to have your courses reviewed and approved by your academic advisor. A certification will be sent to the VA for payment. Be sure to communicate with your advisor to review your class schedule.



Request certification with the OVA.

## Using State Benefits

1. Benefits will vary based on the date of the student's original application for the scholarship. For a detailed breakdown of benefits, please visit <https://www.southalabama.edu/departments/veteransaffairs/vabenefits.html#alabamagidepscholar> or scan the QR code using your mobile device.



Learn about the Alabama GI Dependents Scholarship.

2. Students who are eligible for the Alabama GI Dependents Scholarship must apply with the State of Alabama and we recommend using the information found on the website provided above. In addition, new students must provide a FERPA Release form. This allows the state of Alabama to contribute scholarship funds to the student's account. This form is different from forms used for the financial aid process and can be found at <https://www.southalabama.edu/departments/veteransaffairs/resources/ferpareleaseauthorizationform.pdf> or by scanning the QR code below using your mobile device.



Alabama GI Dependents Scholarship FERPA Form.

3. Finally, eligible students that wish to use their scholarship must complete an application for Financial Aid through the Financial Aid Office. Be sure to reach out to them for assistance. Once all three steps have been completed, Student Accounting will apply the scholarship to the student's account.

# EDUCATIONAL ACCESSIBILITY & DISABILITY RESOURCES

The Center for Educational Accessibility & Disability Resources provide services to students with disabilities. Services include academic and personal counseling, priority registration, special parking arrangements, and reasonable classroom accommodations.

## Step 1

- Visit the Center for Educational Accessibility & Disability Resources website: [SouthAlabama.edu/departments/sds](http://SouthAlabama.edu/departments/sds).
- Review the departmental handbook.
- Complete the Application for Accommodations.
- Upload supporting documentation.

## Step 2

- Students must access their USA JagMail account at **[jagmail.southalabama.edu](mailto:jagmail.southalabama.edu)** Students will be contacted via JagMail within 2 weeks after completing the above steps and may be asked to provide additional documentation or schedule an accessibility meeting. During the accessibility meeting, the student will meet with a CEADR staff member to discuss their disability and accommodations.
- Students can also email, fax, mail or hand deliver their documentation to CEADR.

## Step 3

- On the first day of class, students should provide their instructors with the accommodation letters. Students can choose to email or hand deliver the accommodation letters to your instructors.
- For questions, contact the Center for Educational Accessibility & Disability Resources.

### **The Center for Educational Accessibility & Disability Resources**

320 Student Center Circle  
Educational Services Building, Suite 19  
Mobile, AL 36688  
Phone (251) 460-7212  
Fax (251) 414-8176  
[disabilityservices@southalabama.edu](mailto:disabilityservices@southalabama.edu)





# MATHEMATICS PLACEMENT TEST

Students will be permitted to enroll in mathematics classes based on either a prerequisite course, their ACT math score, their SAT math score, or the Mathematics Placement Test as follows.

USA Math Course	Prereq/ACT/SAT	Grade/Score
MA 112 with co-requisite MTH 100	Math-ACT or	18 or above
	Math-SAT (taken before 5/2016) or	460 or above
	Math-SAT (taken 5/2016 or later) or	500 or above
	Math Placement Test	60-69
MA 112	Math-ACT or	22 or above
	Math-SAT (taken before 5/2016) or	510 or above
	Math-SAT (taken 5/2016 or later) or	540 or above
	Math Placement Test	70-79
MA 113	MA 112 or	C or above
	Math-ACT or	24 or above
	Math-SAT (taken before 5/2016) or	560 or above
	Math-SAT (taken 5/2016 or later) or Math Placement Test	580 or above 80-89
MA 115	Math-ACT or	25 or above
	Math-SAT (taken before 5/2016) or	570 or above
	Math-SAT (taken 5/2016 or later) or	590 or above
	Math Placement Test	80-89
MA 120	MA 112 or	C or above
	Math-ACT or	23 or above
	Math-SAT (taken before 5/2016) or	530 or above
	Math-SAT (taken 5/2016 or later) or	560 or above
	Math Placement Test	80-89
MA 125	MA 113 or	C or above
	MA 115 or	C or above
	Math-ACT or	27 or above
	Math-SAT (taken before 5/2016) or	620 or above
	Math-SAT (taken 5/2016 or later) or	640 or above
	Math Placement Test	90-100

*(Note: The Mathematics Placement Test is the version given starting in Fall 2019 and later.)*

## Math Placement FAQs

- MA 110 does not require the placement test or any minimum ACT math or SAT math score or any previous math class. But MA 110 does not serve as a substitute for the prerequisites for any core course, such as any precalculus or any calculus course. MA 110 only fulfills the mathematics requirements in selected academic programs. Check the University Bulletin for further details.

### Who cannot take the Mathematics Placement Test?

- Students who receive transfer credit for mathematics courses at or above the level of MA 110. Please refer to the student transfer credit evaluation.
- Students who have taken a mathematics course.

### Who does not have to take the Mathematics Placement Test?

- Students who have either a SAT or ACT score.
- Students who receive transfer credit for mathematics courses at or above the level of MA112. Please refer to the student transfer credit evaluation.

### Who has to take the Mathematics Placement Test?

- Students who have neither a SAT or ACT score.
- Students who need courses which have math prerequisite of MA 112 or above but no transfer credit for the courses.

### Who might wish to take the Mathematics Placement Test?

- Students who have course credit may take the exam to check their mastery of the material.
- Students who disagree with the course placement as determined by their ACT or SAT score. A student who disagrees with their placement based on their ACT or SAT score must take the Math Placement Test before enrolling in any mathematics course.

**The PAWS registration system will enforce the placement and course prerequisites as indicated in the course placement table on the previous page.**

## Notes:

- Prerequisite overrides can be granted by the chair of the Department of Mathematics and Statistics, but these will only be given in exceptional cases.
- Students should anticipate a 24-hour delay between the time they take the Mathematics Placement Test and the time they can register for a math class.
- Students should be encouraged to take the Mathematics Placement Test early in their college career. Furthermore, they should be encouraged to fulfill their math requirements early. Mathematics knowledge and ability are necessary in quantitative courses, scientific courses, and a variety of applied business courses.
- Retaking the Mathematics Placement Test is allowed only under special circumstances. To do so, students must have a signed letter from their advisor sent to the Mathematics Placement Test coordinator in the Department of Mathematics and Statistics (MSPB 325). The letter should state this need and the reason for the request. Each request will be reviewed by the Mathematics Placement Test coordinator and the department chair. If a retake is granted, the student will be allowed to register for the last placement exam date prior to the start of the next term.





# ACADEMIC POLICIES AND PROCEDURES

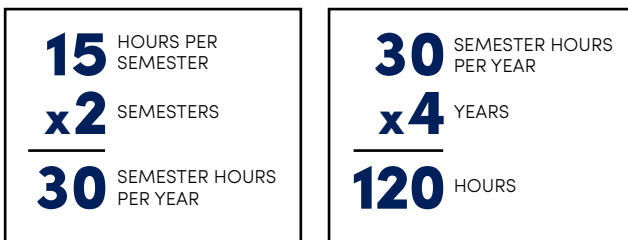


## Academic Calendar

The University operates on the semester system with courses beginning in August, January, and June. The calendar is found in the University Bulletin and on the University's website.

## University Bulletin

Students can view the Bulletin at SouthAlabama.edu. This publication contains regulations concerning academic and administrative policies. The Bulletin describes each academic college and division, and provides details regarding majors or programs of study, degree requirements, and standards of performance.



Note: Students do not always graduate in four years. Some programs require more than 120 hours. Students may attend in the summer to get ahead or make up hours when fewer than 15 hours are completed in Spring and Fall.

## Degree Requirements

Each academic major at USA has specific requirements for degree completion which are listed in the Bulletin. The number of courses required depends on the student's selected major or program of study. All undergraduate programs require a minimum of 120 semester hours. The standard class unit is three semester hours. Undergraduate students taking a full semester schedule of 15 hours usually graduate in eight semesters.

## Degree Audit

Degree Works is the University's web-based degree audit tool. It facilitates real-time and in-progress monitoring of a student's academic progress toward degree completion. Degree Works combines USA's degree requirements and students' completed coursework in checklist format that helps students see how completed courses count towards the declared major or program of study. Degree Works also displays outstanding requirements to help students finish their degree on time.

## Transfer Credit

Transfer credit is accepted from post-secondary institutions that are fully accredited by regional accrediting agencies. Students can view lists of equivalent courses accepted by USA from other institutions on the Transfer Equivalency System (TES) at SouthAlabama.edu/departments/registrar/transfercenter/tes/. Students can see their accepted credit by viewing their unofficial USA transcript on PAWS seven to ten days after the transcript has been received by USA.

## Alternative Forms of Credit

### Advanced Placement (AP)

Students who completed courses in high school and sat for the end-of-year examination should have their official AP scores mailed to USA's Office of Admissions to receive credit.

### International Baccalaureate Program (IB)

Students participating in the International Baccalaureate Program who achieve examination scores of 5 or higher may receive course credit. Individual courses may require scores higher than 5. IB transcripts should be mailed to the Office of Admissions.

### Dual Enrollment

Students who earned collegiate credit while in high school must send an official transcript from the institution through which dual enrollment credit was earned to the Office of Admissions to receive credit.

### College Level Examination Program (CLEP)

Students can earn credit by completing general and/or subject examination and achieving the required minimum scores. A list of approved examinations and required scores is available on the Office of the Registrar website, Transfer Credit Center, SouthAlabama.edu/departments/registrar/transfercenter. Students should consult their academic advisor to determine appropriate exams to take prior to contacting the Office of Counseling and Testing Services to register for exams.





# REGISTRAR

## What do they do?

The Office of the Registrar exists to support the University community by providing information and services to facilitate and promote the educational mission of the University. This role specifically includes providing information and services related to academic program and degree requirements, registration and enrollment verification, and maintenance of permanent academic records for students, faculty, staff, and external constituencies in a timely, accurate, confidential, and supportive manner in accordance with University policy, state and federal law.

## Registration

Each semester, students are assigned a time ticket in PAWS (Personal Access Web System) that specifies when they can register for upcoming semesters. Students should meet with their advisor and check their PAWS accounts for holds that prevent registration. Holds should be cleared prior to registration in PAWS.

## Schedule of Classes

The schedule of classes for each semester is displayed in PAWS (Personal Access Web System) approximately eight weeks prior to registration. South Scheduler is a tool in PAWS to assist students in planning their academic schedule. Students can view multiple schedule options based on courses and offering times. Schedule options can be saved until the student's time ticket date.

## Academic Records

Students can request official USA academic transcripts, verifications of enrollment/degree, and letters of good standing. Students also have access to their unofficial transcripts online via PAWS. Under FERPA, a student has the right to request that the University not release directory information. To request non-disclosure of directory information, students must complete the required form in the Registrar's Office or obtain forms online at [SouthAlabama.edu/departments/eforms/registrar](http://SouthAlabama.edu/departments/eforms/registrar).

## Changes in Personal Information

Students wishing to change their address, phone number and emergency contacts can do so in PAWS. To update social security number, change a legal name or provide a preferred name, students should submit proper documentation and complete the required forms which can be found at [SouthAlabama.edu/departments/eforms/registrar](http://SouthAlabama.edu/departments/eforms/registrar).

## Classification of Students

Freshman	0–29 semester hours
Sophomore	30–59 semester hours
Junior	60–89 semester hours
Senior	90+ semester hours



## Classification of Courses

Courses are numbered according to the following plan:

Non-credit	001-099
Freshman	100-199
Sophomore	200-299
Junior	300-399
Senior	400-499
Graduate	500 and above

## Midterm and Final Grades

Grades will be available to students in PAWS at midterm and at the end of each semester. Students who stop attending all classes at midterm may be unofficially withdrawn. Here is an example of how a student would calculate his or her grade point average (GPA):

### English 102:

B = 3 points x 3 semester hours = 9 grade-points

### Psychology 120:

C = 2 points x 3 semester hours = 6 grade-points

### History 101:

A = 4 points x 3 semester hours = 12 grade-points

### TOTALS:

27 grade-points/9 semester hours = 3.00 GPA

## The University's Undergraduate Grading System

<b>A</b>	4 grade-points per semester hour	Excellent
<b>B</b>	3 grade-points per semester hour	Good
<b>C</b>	2 grade-points per semester hour	Satisfactory
<b>D</b>	1 grade-point per semester hour	Minimum
<b>F</b>	Failure, no grade-points	
<b>S</b>	Satisfactory, no grade-points	
<b>U</b>	Unsatisfactory, no grade-points	
<b>I</b>	Incomplete (must be cleared by mid-term of following semester)	
<b>WD</b>	Withdrawal	
<b>P</b>	Course in progress	
<b>AU</b>	Audit	
<b>F*</b>	Failure due to excessive absences	
<b>U*</b>	Unsatisfactory due to excessive absences	
<b>N</b>	No grade (assigned only by the registrar)	

## Graduation and Commencement Ceremonies

The Office of the Registrar receives applications for graduation and plans the college commencement ceremonies.





# PAYING FOR COLLEGE

The Division of Student Financial Services (SFS) understands how complex the world of financial aid and educational expenses can appear. We are committed to offering students support in meeting their financial obligations, understanding the policies of the institution, understanding how to budget for the now AND plan for the future, as well as navigate the everyday college experience.

SFS is composed of four primary offices – Financial Aid, Scholarship Services, Student Accounting, as well as a shared model in the USA One Stop. We also offer a student support program in South CARES.

## Applying for Student Aid

**Federal Student Aid:** Federal student aid includes grants, loans and part-time employment. Eligibility for most of these programs is based upon the “demonstrated financial need” of the student applicant and their family. However, financial need is not a criterion for all programs. Most federal student aid applicants will be eligible for some form of federal student aid regardless of demonstrated financial need. In order for eligibility to be determined, a Free Application for Federal Student Aid (FAFSA) **must be filed each year** at [fafsa.gov](http://fafsa.gov). USA’s school code is 001057. The FAFSA opens on October 1 each year.

Data provided on the FAFSA will be analyzed according to the federal, state and institutional guidelines. When the Office of Financial Aid receives the FAFSA, an email will be sent to the student to notify them that their FAFSA has been received and if any additional information is needed to determine eligibility. Please remember that it is the student’s responsibility to submit FAFSA and all additional requested information as soon as possible to ensure adequate processing time for meeting payment deadlines.

**Scholarships:** JagSPOT is USA’s Scholarship Program Opportunity Tracker. JagSPOT allows both incoming and current USA students the ability to research, apply, and access their scholarship information, campus-wide, through one online system. Students are encouraged to explore all the scholarship opportunities available – which can be searched through our A-Z Scholarship Directory or through our Departmental Scholarship Directory.

## Student Aid Offers

**Federal Student Aid:** Once all information has been received and reviewed, the Office of Financial Aid will process the student’s federal student aid offer. This process may take approximately two to three weeks to complete. Offers are based on individual eligibility and the availability of funds. Students will be notified via JagMail to review their offers in PAWS.

**Scholarships:** Once the individual application deadlines close, students can track and monitor the progress of their open applications, as well as the progress of the scholarship award, in JagSPOT. Any notifications and communication with the student, including pending items and award notifications, will be made by the system through the student’s JagMail account.

## Student Aid Refunds

If the total amount of student aid exceeds the charges on the student account, the student account will be assessed for eligible refunds. Any refunds are processed by the Office of Student Accounting.

1

Any tuition refunds for which tuition was originally paid by credit card will be refunded to credit card.

If enrolled for electronic direct deposit (EDD) through the Office of Student Accounting, the refund will be deposited to the student’s checking account.

2

If not enrolled in EDD, the refund will be mailed by the Office of Student Accounting to the mailing address in PAWS. This process may take up to 10 business days.

3

Please refer to the Academic Calendar for the dates each semester that refunds will be issued.

### STUDENT FINANCIAL SERVICES

(251) 341-4USA (341-4872)  
[SouthAlabama.edu/SFS](http://SouthAlabama.edu/SFS)

## Thinking about dropping a course?

Follow these steps before making a decision.

### First, ask these questions:

- Could your decision impede your progress towards finishing your degree?
- Is it a waste of money spent on tuition, fees and books?

### Second, talk to someone:

- Talk to your professor. You might not be doing as badly as you think.
- Talk to your academic advisor. The course might be taught only once a year or once every two years. The course might be a prerequisite to a required course. You might step out of a course sequence, thus delaying your graduation.
- Talk to a Financial Aid Representative. You might put your scholarship, grant or financial aid in jeopardy.

## Student Aid Charging Privileges at the USA

### Bookstore

If a student has excess eligible student aid funds after all charges on the student account, students may charge up to \$1,500. The Bookstore will have the student's account balance available at checkout after the student has registered. Bookstore charges will be placed on the student's account and covered by excess student aid funds. Please refer to the Academic Calendar for the Bookstore charge periods each semester.

### Tuition Payment

If student aid does not cover all charges on the student account, the student can pay the difference with ACH web checks, MasterCard, VISA, American Express, Discover Card online through PAWS. Checks can be made payable to: University of South Alabama. Always write student number (J#) on checks. No cash please.

### Tuition Payment Plan

USA offers the option to pay via participation in the USA Payment Plan. Students must enroll in the payment plans in accordance with each semester's payment deadlines or their class schedule is subject to cancellation. For more information, visit [SouthAlabama.edu/studentaccounting](http://SouthAlabama.edu/studentaccounting).

## How Student Aid is Disbursed

Student aid will be applied to the student's account and will officially "pay" towards the student's institutional charges at the beginning of each term if they have met all eligibility requirements. All eligible credit balances and refunds of student aid are handled by the Office of Student Accounting and will not be issued until after the drop/add period.

The amount of aid a student received depends on the number of credit hours they are enrolled in on the last official drop/add day. Classes MUST BE taken for credit and be required for a student's degree to count towards student aid eligibility. Classes taken as audit will not count towards eligibility. Initial eligibility for student aid is based on full time enrollment and may be prorated for lesser enrollment. Any additions to a student's registration after the 5th day of class at 5:00 p.m. will not be counted towards student aid eligibility.

### Can loans be cancelled?

Yes. Students can request to have their loans reduced or canceled by emailing the financial aid office at [finaid@southalabama.edu](mailto:finaid@southalabama.edu).

## Student Accounting

The Office of Student Accounting is located in Meisler Hall, Suite 1300, and provides a variety of financial services to students. The office is responsible for implementing tuition and fee policies approved by the University Board of Trustees. Services provided by the Office of Student Accounting include collecting payment of tuition and fees, disbursing of aid funds to students, administering third party tuition contracts, and providing students with copies of their student accounts and 1098-T forms.



# SCHOLARSHIP GUIDELINES



- Scholars must be enrolled full-time each fall and spring semester and earn 30 credit hours during the academic year. Students are highly encouraged to take, on average, 14-16 hours each fall and spring to stay on track for 30 hours. Be aware that repeating a course for which you have already earned credit will not contribute credit hours toward satisfying the 30-hour requirement for the year.
- Most institutional scholarship recipients must also maintain a minimum 3.0 cumulative institutional GPA (after spring semester) to be eligible for renewal in subsequent years.
- If a student does not meet the renewal requirements at the end of the spring semester (i.e. had to withdraw from a course or GPA dropped below 3.0), the student may enroll at USA, at their own expense, during the summer term to meet the requirements. The scholarship will be forfeited if renewal requirements are not met at the end of summer semester.

- Institutional scholarships are typically applied towards the payment of USA tuition and fees. In some cases, the award may also be used for USA Housing, USA Dining, and required textbooks at the USA Bookstore. Scholarships may have additional award specifics or restrictions – please review your award letter carefully for individual scholarship guidelines.
- Institutional scholarships are non-refundable.
- Institutional scholarship funds do not roll from term to term or year to year.
- Institutional scholarship funds may not be used for the summer term.
- All institutional scholarship funds must be used prior to the end of the 50% period.
- Renewable scholarships will be reviewed at the end of the spring term, once all grades have been certified by the Office of the Registrar.
- Grade replacement requests must be completed and submitted to the Office of the Registrar at the end of completing term and must be processed prior to the first day of the subsequent term.
- Student-athletes that participate in a head-count sport for the University of South Alabama receive athletic aid that covers 100% of their USA tuition and fees, room, board, and books. These student-athletes are not eligible to receive USA Freshman Admission Scholarships.

## **STUDENT FINANCIAL SERVICES**

(251) 341-4USA (341-4872)  
[SouthAlabama.edu/SFS](https://SouthAlabama.edu/SFS)

# FERPA RELEASE



## Authorization to Release Financial Information

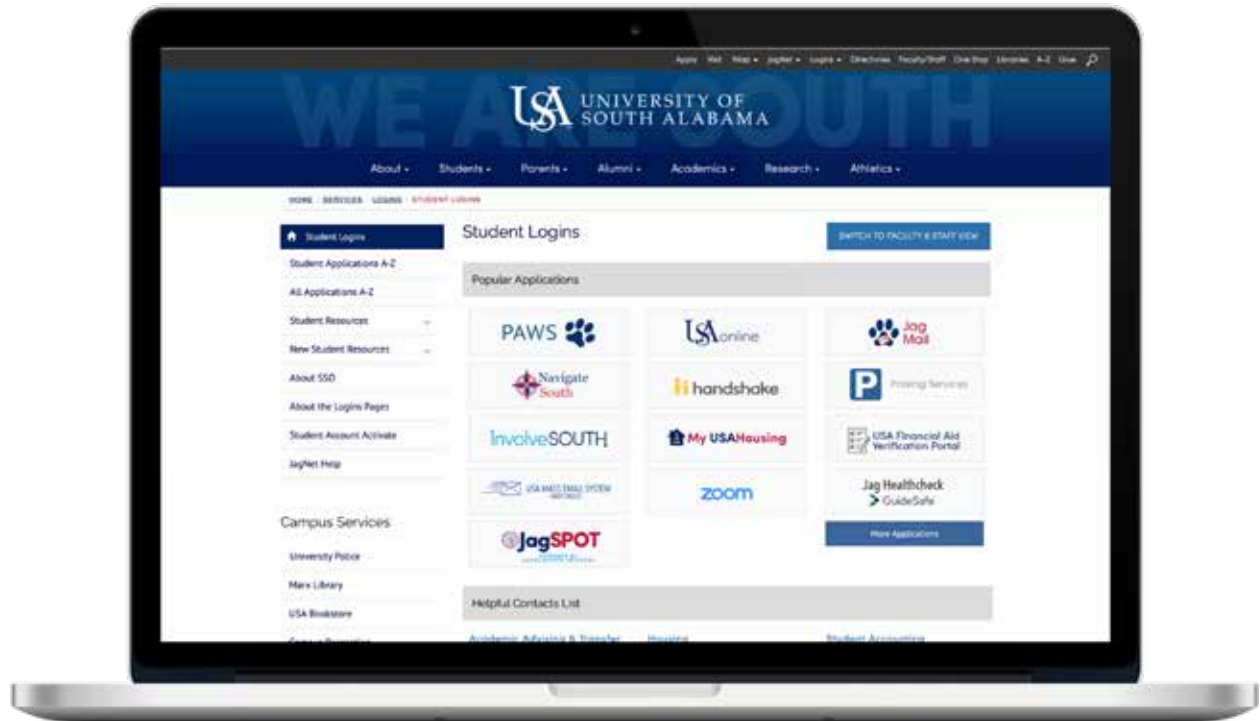
The Family Educational Rights and Privacy Act (FERPA) of 1974 is designed to protect the privacy of a student's educational records. These confidential records include academic, financial aid, scholarship and billing/account information, and will not be released without written consent from the student. By submitting this form, the student authorizes University personnel to release only confidential financial information.

This means that parents and/or guardians do not have access to the above-mentioned items nor can they gain access without written permission from the student. This is important for students whose parents or guardians may be paying tuition on their behalf. Until the FERPA form has been completed, turned in, and processed, parents and/or guardians will not be able to pay tuition statements over the phone without the student present and actively involved in the process.

To complete the form, visit [SouthAlabama.edu/OneStop](https://SouthAlabama.edu/OneStop) and click One Stop Forms > eForms in the left navigation. You will need your login credentials to access this form.



# LOGINS



## What is PAWS?

PAWS is a web accessible, dynamic, and interactive computer system providing services to the students, faculty and staff of USA. Students will register for classes using PAWS.

## What is available?

- Financial aid status
- Demographic information
- Bulletin and schedule of classes
- Course registration
- Student accounting information
- Payment portal
- Hold information
- Grade reports
- Unofficial transcripts
- Enrollment verification

## What is Single Sign On?

The Single Sign On (SSO) login credentials can be used to access any USA apps.

## Logging On

- Visit SouthAlabama.edu
- Select the “Logins” tab
- Click desired app (shown above)
- Enter username and password
- Username is the student’s Jag Number, J00#####
- Password is the student’s JagMail password

## Where are the courses that I registered for via PAWS?

Students can find all of their courses under the “sites” button at the top right hand corner of USAonline. Add courses to favorites by selecting the star next to the course. The site will appear at the top when you open USAonline.

## What if a course is missing?

First, check the class syllabus. Not all teachers use USAonline. If the syllabus references USAonline or Canvas, email the professor. Include name, Jag Number, and course information and ask why that particular class is missing.

# STUDENT HEALTH

The Student Health Center is located in front of the Student Center at 5870 USA South Dr. Services are offered to currently enrolled students by a team of fully licensed and board-certified providers. Hours of operation are Monday–Wednesday–Friday 8:00 a.m. until 5:00 p.m. and Tuesday – Thursday 9:00 a.m. until 5:00 p.m. when classes are in session.

## Mandatory Immunization Policy

- The University of South Alabama requires that all students born after 1956 must have two (2) doses of a measles-containing vaccine (rubeola, MR, MMR) prior to class registration. One dose must have been after 1980, and at least one of those doses must have been an MMR.
- The University of South Alabama requires that all enrolling international and ESL students provide acceptable proof of tuberculosis screening. The screening result date must be within the past six (6) months.
- All students living in the residence halls must provide proof of having received immunization for bacterial meningitis within the last five (5) years. The meningitis vaccine must be the Meactra or Menvea.

Please submit all three immunization information and records outlined above through the Student Health web portal: [Studenthealth.southalabama.edu](http://Studenthealth.southalabama.edu)

## Tuberculosis

All first time entering domestic students are also required to fill out a Tuberculosis questionnaire. The questionnaire form can be downloaded at: [SouthAlabama.edu/studenthealth/forms.html](http://SouthAlabama.edu/studenthealth/forms.html)

### STUDENT HEALTH CENTER

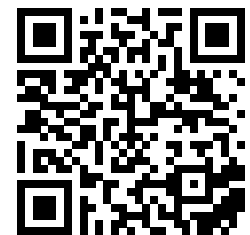
Phone: (251) 460-7151

Fax: (251) 414-8227

[studenthealth@southalabama.edu](mailto:studenthealth@southalabama.edu)

[SouthAlabama.edu/studenthealth](http://SouthAlabama.edu/studenthealth)

# ALCOHOL AWARENESS



University Counseling and Testing Services Center strongly recommends Southbound Orientation students complete “eCheckup to Go” before your orientation session.

### What is “eCheckup to go?”

An evidence-based, personalized online intervention/prevention program that

- Provides objective and confidential feedback about drinking
- Compares a student’s drinking to that of peers
- Assesses personal risk for alcohol problems

### Where is “eCheckup to go?”

- Scan the QR code to access the link.
- After completing the program, authorize electronic verification of completion.

For more information contact Joel Dobson, USA Counseling and Testing Services, (251) 460-7051.



# TRANSFER STUDENT SUCCESS GUIDE

ADVICE FOR TRANSFER STUDENTS FROM  
TRANSFER STUDENTS

## Before the semester begins

- Carefully check the course requirements in the STARS guide for specific programs at USA.
- Submit official transcripts and all necessary paperwork to the USA Office of Admissions at least four weeks prior to the scheduled orientation session. Failure to do this could cause class registration to be delayed.
- Prior to the start of classes, visit the campus and become familiar with it. Note the location of classrooms, explore dining options, and plot out where you can park.
- Check with Financial Aid about how to transfer financial aid from a previous school to USA.

## After the semester begins

- Students should check their JagMail account daily and all records in PAWS at least once a week
- Allow extra time to find a parking spot during the first few weeks of classes.
- Get involved in student organizations (over 200 to choose from).
- Go to class, find the time to study, and complete assigned homework on schedule.
- There are a number of counseling and academic services to help students be successful. Students needing help should ask their instructors for guidance right away.
- Balance work and family demands. Students should plan time in their weekly schedule for reading assignments and studying.
- Student should make an appointment to meet with their academic advisor every semester.
- Enjoy all the advantages of being on a vibrant college campus!



# FAQ

## When do students pay for tuition and fees?

The Office of Student Accounting accepts payment via cash, check, ACH, online through PAWS, VISA, MasterCard, American Express or Discover. Student aid awarded to the student's account or approval in the USA Payment Plan is also applied as payment towards the total charges on the student account. Please refer to the Academic Calendar for payment deadlines each semester. If a student misses the payment deadline, their registration will be canceled due to nonpayment by the Office of Student Accounting. Students will be given the opportunity to re-register for classes. However, if a student's schedule is canceled, there is no guarantee that their preferred classes will be available at the time the re-register.

## Is there a way to pay for tuition, fees, housing and meal plan in installments?

USA provides the option to pay via participation in the USA Payment Plan. Students must enroll in the payment plans in accordance with each semester's payment deadlines or their class schedule is subject to cancellation. For more information, visit [SouthAlabama.edu/studentaccounting](https://SouthAlabama.edu/studentaccounting).

## How do students get information regarding the residency classification process? (Out-of-state to in-state residency status)

An overview of the policy and an application for in-state residency reclassification is available at [SouthAlabama.edu/registrar/residency.html](https://SouthAlabama.edu/registrar/residency.html). Should students have questions regarding the application procedure for residency reclassification, contact the Registrar's Office, who manages the entire application process.

**Note:** Residents of Escambia and Santa Rosa counties in Florida, and George, Greene, Harrison, Jackson, Perry, and Stone counties in Mississippi are NOT charged out-of-state fees and pay the in-state rate for tuition. Students should check PAWS to verify their residency classification.

## How is tuition residency classification determined?

The Office of Admissions determines a student's residency status at the time of admission. Resident and non-resident determinations are based on the application information, transcripts, and other documents required for admission. Any out-of-state information received will default a student to a "non-resident" status. It is the student's responsibility to check their residency status when accepted to the University.

## How do students verify residency classification?

The residency determination can be found on the acceptance letter, student account bill, and the student Personal Access Web System (PAWS). In PAWS, select the "Student Service & Financial Aid" tab, select "Student Records," select "General Student Information," view "Residence Status." Students' tuition charges are assessed based on the "Residence Status" displayed in PAWS.

## How do students request a residency reclassification?

To be reclassified for tuition purposes, a non-resident student must prove by sufficient evidence, as determined by the institution, that the individual has been a resident of the state of Alabama or an approved service area for the 12 consecutive months preceding the semester of registration or meets a qualified exception. Visit the link below for further details and to obtain the Application for Residency Reclassification. [SouthAlabama.edu/departments/registrar/residency.html](https://SouthAlabama.edu/departments/registrar/residency.html)

## How do students provide proof of immunizations?

Each new student accepted for admission must submit, prior to registration, completed immunization forms to the USA Student Health Center. Students must submit their records on the Student Health Web Portal. [StudentHealth.SouthAlabama.edu](https://StudentHealth.SouthAlabama.edu)

## What about books and supplies?

Students will reserve their books and supplies at the USA Bookstore after registering for classes and attending Orientation. The USA Bookstore has a large selection of used and new textbooks available for purchase and rental. The estimated cost of books and supplies for a full time student is \$650 per semester. Payment for books and supplies is due at the time of purchase unless using federal student aid or scholarships. Please refer to the Academic Calendar for the Bookstore charge periods each semester.

## What about student ID cards?

The USA student ID card is a permanent card that is valid for students as long as they are enrolled in classes at USA. The cost of the card is \$10, which will be added to the students tuition statement. Prior to orientation, visit [southalabama.edu/departments/studentcenter/photosubmission.html](https://southalabama.edu/departments/studentcenter/photosubmission.html) to upload a student ID card photo.

## When do students get a parking zone permit?

All students will order their parking permits online at [SouthAlabama.edu/parkingservices](https://SouthAlabama.edu/parkingservices) approximately two weeks before classes. Students will need to know their JagNet ID (JagMail Username) and password, along with their license plate number, year, make and model of their vehicle. The campus police will be issuing citations the first week of class. Student tuition and fees include one student parking permit per academic year and permits will be mailed to students for a fee of \$5.00.

## Does USA have a hurricane plan in place?

Yes! In the event a hurricane is forecasted and is being tracked towards Mobile or the Alabama Gulf Coast, information regarding emergency plans can be found online at [SouthAlabama.edu](https://SouthAlabama.edu) or by calling the Weather Hotline at **(251) 360-6195**.

## How do students get a campus mailbox?

Students who live on campus are assigned a campus mailbox at no additional cost. Resident mail and packages are available for pick up at the USA Mail Hub located on the first floor of the Student Center.

## What if an employer is paying for my tuition?

Contact the Office of Student Accounting at **(251) 460-6195** for assistance. You must have all proof of payment documentation to the Office of Student Accounting by 5pm on the payment deadline.

## I have pre-paid tuition plan. What do I do?

Many students from Alabama and other states have pre-paid tuition plans. Eligibility cards should be submitted to the Office of Student Accounting in Meisler Hall so the University can bill the plan. The Office of Student Accounting manages these plans, and is happy to assist. Students can call the Office of Student Accounting at **(251) 460-6195** prior to registration for assistance.

## I received a scholarship from an outside organization. What should I do?

All external scholarships should be reported to the Office of Scholarship Services even if they are paid to the student directly. These scholarships are considered resources to help pay for educational costs and may impact federal financial aid eligibility. Any unreported scholarships may result in an over award if a student is also receiving federal student aid and/or other scholarships.

## I will be receiving VA benefits. How does that work?

Contact the Office of Veteran Affairs at **(251) 460-6230** for assistance.

## What kind of payment does the University accept?

Tuition, fees and housing: Check, ACH web check, MasterCard, VISA, Discover or American Express  
Dining Services: Check, money order, MasterCard, VISA  
Bookstore: MasterCard, VISA, Discover or American Express  
Mail Hub: Cash, MasterCard, VISA or Discover

## How do I obtain an enrollment verification letter to send to my insurance company?

Visit the Registrar's Office in Meisler Hall after you register for classes to make a request. It takes two to three business days for the request to be processed. Undergraduate students must be enrolled in at least 12 hours to be considered full-time for insurance purposes.

## Does USA have a student code of conduct?

Yes! The Code of Student Conduct is the University's policy regarding non-academic discipline of students. For more information, please visit [SouthAlabama.edu/departments/studentaffairs/lowdown.html](https://SouthAlabama.edu/departments/studentaffairs/lowdown.html)

## What should a student do once they have been admitted?

Once a student has been admitted to South, they should reference the checklist found here:

[www.southalabama.edu/departments/orientation/freshmanorientation.html](https://www.southalabama.edu/departments/orientation/freshmanorientation.html)



# CONTACTS

OFFICE	LOCATION	WEBSITE	PHONE
Academic Advising	ASC 1375	SouthAlabama.edu/academicadvising	(251) 341-4017
Admissions	MH 2500	SouthAlabama.edu/departments/admissions	(251) 460-6141
Adult Learner Services	75 S. University Blvd.	SouthAlabama.edu/adultlearner	(251) 460-6257
Athletics	300 Joseph E. Gottfried Dr.	usajaguars.com	(251) 460-7121
Bookstore	Student Center	southalabama.bncollege.com	(251) 460-7012
Campus Police	290 Jaguar Blvd.	SouthAlabama.edu/police	(251) 460-6312
Campus Recreation	51 Jaguar Blvd.	SouthAlabama.edu/campusrec	(251) 460-6065
Career Services	ASC 1370	SouthAlabama.edu/careerservices	(251) 460-6188
Center for Academic Excellence	Marx Library, Second Floor	SouthAlabama.edu/CAE	(251) 460-6480
Counseling & Testing Services	300 Student Center Circle	SouthAlabama.edu/counseling	(251) 460-7051
Dining	232 Student Center	SouthAlabama.edu/departments/dining	(251) 460-6296
Enrollment Services	MH 2400	SouthAlabama.edu/departments/enrollmentservices	(251) 460-6494
Financial Aid	MH 1200	SouthAlabama.edu/finaid	(251) 460-6231
Housing	251 Delta Loop	SouthAlabama.edu/housing	(251) 341-HOME (4663)
International Admissions	MH 2200	SouthAlabama.edu/international	(251) 460-6050
Marx Library	5901 USA North Dr.	SouthAlabama.edu/library	(251) 460-7025
Multicultural Student Affairs	5930 USA South Dr.	SouthAlabama.edu/omsa	(251) 460-6895
New Student Orientation	Mobile Townhouse	SouthAlabama.edu/orientation	(251) 460-7093
New Student Recruitment	MH 2500	SouthAlabama.edu/departments/admissions/recruitmentteam/	(251) 460-7834
Registrar	MH 1100	SouthAlabama.edu/registrar	(251) 460-6251
Scholarship Services	MH 1225	SouthAlabama.edu/scholarships	(251) 461-1958
Student Academic Success	ASC 1304	SouthAlabama.edu/departments/academicsuccess	(251) 460-7103
Student Accounting	MH 1300	SouthAlabama.edu/studentaccounting	(251) 460-6195
Student Activities	SC 101	SouthAlabama.edu/departments/studentactivities	(251) 460-7003
Student Center	350 Student Center Circle	SouthAlabama.edu/studentcenter	(251) 460-6077
Center for Educational Accessibility & Disability Resources	6001 South Dr, Suite 75	SouthAlabama.edu/sds	(251) 460-7212
Student Health Center	5870 USA South Dr.	SouthAlabama.edu/departments/studenthealth	(251) 460-7151
USA Baldwin County	10 N. Summit St. Fairhope, AL	SouthAlabama.edu/departments/usabc	(251) 928-8133
USA Federal Credit Union	103 Hillcrest Rd.	SouthAlabama.edu/departments/usafedcr	(251) 706-0255
Veterans Affairs	ASC 1345	SouthAlabama.edu/veteransaffairs	(251) 460-6230

Know South. Go South.



## One Stop – All of South

At the University of South Alabama, there's a shortcut for students with questions about everything from financial aid to academic resources to campus activities. It's called One Stop. And it's making problem-solving more convenient so students can focus on school and make the most of their college experience.

Visit [SouthAlabama.edu/onestop](https://SouthAlabama.edu/onestop), call (251) 341-4872 from 8 am to 5 pm or come see us in Meisler Hall, First Floor.

# CONTACTS

ACADEMIC COLLEGES	DEAN	LOCATION	WEBSITE	PHONE
Pat Capps Covey College of Allied Health Professions	Dr. Susan Gordon-Hickey, Interim Dean	HAHN 3042	SouthAlabama.edu/alliedhealth	(251) 445-9260
College of Arts & Sciences	Dr. Andrzej Wierzbicki	HUMB 118	SouthAlabama.edu/artsandsci	(251) 460-6280
Mitchell College of Business	Dr. Alvin Williams, Interim Dean	5811 USA South Dr.	SouthAlabama.edu/mcob	(251) 460-7167
College of Education and Professional Studies	Dr. John E. Kovaleski, Interim Dean	UCOM 3600	SouthAlabama.edu/ceps	(251) 380-2889
College of Engineering	Dr. John Usher	SHEC 2114	SouthAlabama.edu/engineering	(251) 460-6140
College of Medicine	Dr. John Marymont	5795 USA North Dr.	usahealthsystem.com/com	(251) 341-3030
College of Nursing	Dr. Heather Hall	HAHN 3068	SouthAlabama.edu/con	(251) 445-9400
School of Computing	Dr. Harold Pardue, Interim Dean	SHEC 2101	SouthAlabama.edu/soc	(251) 460-6390
Honors College	Dr. Doug Marshall, Interim Dean	Seaman's Bethel Theatre	SouthAlabama.edu/honors	(251) 461-1637

## Advising Contacts

DEPARTMENT	NAME	PHONE
<b>Academic Advising &amp; Transfer Services</b>		(251) 341-4017
<b>Adult Degree Program</b>	Diane Harvey	(251) 460-6263
	Pamela James	(251) 460-6263
<b>Adult Learner Services</b>	Bob Charlebois	(251) 460-6257
<b>Allied Health</b>	Nancy Dunn	(251) 445-9260
	Linda Sterns	(251) 445-9260
	Brittney Day	(251) 445-9260
	Jason Brooks	(251) 461-1832
<b>Arts and Sciences</b>	Nancy Howell	(251) 460-7233
	Kelly Taylor	(251) 460-7233
	Shylonda Stewart	(251) 460-7586
<b>Athletic Academic Services</b>	Cody Crisp (Baseball, Soccer, Women's Golf, Tennis)	(251) 460-7341
	Pat Johnson (Women's Basketball, Track & Field, Cross Country)	(251) 461-1415
	Summer Stover (Football)	(251) 414-8240
	Ethan Vicars (Football)	(251) 414-8230
	Jason Kelly (Softball)	(251) 460-6072

DEPARTMENT	NAME	PHONE
<b>Baldwin County Campus</b>	Paige Rucker	(251) 928-8133
<b>Business</b>	David Potter	(251) 460-7167
<b>Computing</b>	Beth Simmons	(251) 460-7299
	Sally Morris	(251) 380-2889
<b>Education &amp; Professional Studies</b>	Diane Harvey	(251) 380-2889
	Pamela James	(251) 380-2889
<b>Engineering</b>	Nani Perez Uribe	(251) 461-6140
<b>Honors College</b>	Alan Sells	(251) 460-7145
<b>Nursing</b>	Kristyn Seawell	(251) 445-9411
	Camry McCants	(251) 445-6738
<b>Pre-Health Professions/BMD</b>	Amanda Freyaldenhoven	(251)445-9280
	Patty Davis	(251)445-9280
<b>Pre-Law</b>	Ron Nelson	(251) 460-6725
<b>Center for Educational Accessibility &amp; Disability Resources</b>	Mario Sheats	(251) 460-7212

# ALUMNI



## Welcome, Students!

Stop by our office and get connected. You are an important part of our USA family.

- Network with over 83,000 alumni
- Enjoy tailgating at USA football games
- Become eligible to join USA's Rec Center (graduates only)
- Save 10% at the USA Bookstore



100 Alumni Dr.  
(251) 460-7084  
alumni@southalabama.edu  
Facebook: @USAAumni  
Twitter: @USAAumni  
Instagram: @usa\_alumni  
LinkedIn: University of South Alabama  
National Alumni Association



# CAMPUS MAP



**FOLLOW THE PAW PRINTS FOR CAMPUS TOUR**

**Menora College**  
2000 University Center  
(251) 461-8137

**New Student Orientation**  
100 Student Center  
(251) 461-8137

**Mitchell College of Business**  
100 Mitchell College of Business  
(251) 461-8137

**College of Education and Professional Studies**  
1000 University Center  
(251) 461-8137

**College of Engineering**  
214 Shelby Hall  
(251) 461-8137

**Graduate School**  
200 Wharton Administration Building  
(251) 461-8137

**School of Computing**  
100 Shelby Hall  
(251) 461-8137

**MEISLER HALL**  
Administration: 1000  
Graduate Services: 1400  
Financial Aid: 1200  
International Education Programs: 1300  
International Services: 1300  
New Student Recruitment: 1300  
Registrar: 900  
Student Accounting: 1300

## CAMPUS FACILITIES, ALPHABETICAL LISTING

- |   |   |  |  |   |
|---|---|--|--|---|
| 85 Academic Services Center             | 64 Communication Building                           | 49 Gamma Residence Hall 7                                  | 110 Life Sciences Lecture Hall               | 118 Shelby Hall                             |
| 19 Alpha Gamma Delta Sorority House     | 88 Computer Services Center                         | 50 Gamma Residence Hall 8                                  | 84 Lubel Memorial Tennis Courts              | 22 Sigma Chi Fraternity House               |
| 103 Alpha Hall East                     | 73 Construction Services & Facilities Warehouse     | 51 Gamma Residence Hall 9                                  | 53 Luis Gonzalez Hitting Facility            | 58 Soccer Field (The Cage)                  |
| 107 Alpha Hall South                    | 89 Counseling and Testing                           | 109 Glass Arts Building                                    | 77 MacQueen Alumni Center                    | 57 Softball Field (Jaguar Field)            |
| 18 Alpha Omicron Pi Sorority House      | 26 Delta Commons                                    | 38 Grounds Department                                      | 74 Maintenance Garage                        | 56 Softball/Soccer Fieldhouse               |
| 67 Archaeology Building                 | 27 Delta Residence Hall 3                           | 8 Hancock Whitney Stadium                                  | 60 Marching Band Practice Field              | 55 Stanky Field                             |
| 68 Archaeology Lab 1                    | 28 Delta Residence Hall 4                           | 86 Health, Kinesiology & Sport Building/Jag Gym            | 61 Marching Band Practice Field Pavilion     | 25 Stokes Hall                              |
| 69 Archaeology Lab 2                    | 29 Delta Residence Hall 5                           | 101 Health Sciences Building                               | 95 Marx Library                              | 93 Student Center                           |
| 70 Archaeology Storage                  | 30 Delta Residence Hall 6                           | 102 Health Simulation Building                             | 112 Mathematical Sciences & Physics Building | 87 Student Health Center                    |
| 9 Athletics Administration Building     | 15 Dining Facility (Fresh Food Company)             | 75 Humanities Building                                     | 105 Medical Sciences Building                | 12 Student Recreation Center                |
| 63 Athletics Annex                      | 97 Education & Outreach Building                    | 90 Innovation in Learning Center                           | 94 Meisler Hall                              | 100 Technology & Research Park              |
| 32 Azalea Hall                          | 91 Educational Services Building                    | 1 Intramural Fields  | 82 Mitchell Center                           | 98 Technology & Research Park, Building III |
| 33 Beta Apartment Residence Hall 1      | 13 Epsilon Residence Hall 1                         | 2 Intramural Fieldhouse                                    | 116 Mitchell College of Business             | 72 Telecommunications Building              |
| 34 Beta Apartment Residence Hall 2      | 14 Epsilon Residence Hall 2                         | 66 Jag Fitness Trail                                       | 117 Mitchell Learning Resource Center        | 114 Tholos of Delphi Replica                |
| 35 Beta Apartment Residence Hall 3      | 10 Faculty Club                                     | 62 Jaguar Track  | 80 Mobile Townhouse                          | 78 Tolmin House (formerly Alumni Hall)      |
| 36 Beta Apartment Residence Hall 4      | 59 Farish Beard Indoor Practice Facility (Softball) | 6 Jaguar Training Center                                   | 81 Moulton Tower & Alumni Plaza              | 4 Transportation Services                   |
| 37 Beta Apartment Residence Hall 5      | 7 Football Fieldhouse                               | 5 James A. and Frances H. Yance Football Practice Facility | 11 Outdoor Adventures                        | 39 Treatment Storage & Disposal             |
| 99 BMA Dialysis Center                  | 42 Gamma Residence Hall 0                           | 54 Jon Lieber Clubhouse                                    | 52 Parking Services                          | 119 University Commons                      |
| 92 Bookstore                            | 43 Gamma Residence Hall 1                           | 24 Kappa Alpha Fraternity House                            | 17 Phi Mu Sorority House                     | 108 Visual Arts Complex                     |
| 31 Camellia Hall                        | 44 Gamma Residence Hall 2                           | 20 Kappa Delta Sorority House                              | 23 Pi Kappa Alpha Fraternity House           | 113 Whiddon Administration Building         |
| 3 Central House on Stadium Apartments   | 45 Gamma Residence Hall 3                           | 41 Kappa Sigma Chapter Room                                | 11 Pi Kappa Phi Fraternity House             |   |
| 106 Central Services Admin Building     | 46 Gamma Residence Hall 4                           | 96 Laboratory of Infectious Diseases                       | 52 Police/Beta-Gamma Commons                 |   |
| 71 Central Utilities Plant              | 47 Gamma Residence Hall 5                           | 115 Laidlaw Performing Arts Center                         | 40 Property Inventory Warehouse              |   |
| 104 Charles M. Baugh Biomedical Library | 48 Gamma Residence Hall 6                           | 111 Life Sciences Building                                 | 65 Science Laboratory Building               |   |
| 76 Chemistry Building                   | 49 Gamma Residence Hall 7                           |  | 79 Seamen's Bethel/Honors College            |   |
| 16 Chi Omega Sorority House             |   |  |  |   |

## CAMPUS FACILITIES, NUMERICAL LISTING

- |  |                                    |   |   |  |
|--|------------------------------------|---|---|--|
| 1 Intramural Fields  | 25 Stokes Hall                     | 50 Gamma Residence Hall 8                           | 73 Construction Services & Facilities Warehouse | 97 Education & Outreach Building             |
| 2 Intramural Fieldhouse                                    | 26 Delta Commons                   | 51 Gamma Residence Hall 9                           | 74 Maintenance Garage                           | 98 Technology & Research Park, Building III  |
| 3 Central House on Stadium Apartments                      | 27 Delta Residence Hall 3          | 52 Parking Services/Police/Beta-Gamma Commons       | 75 Humanities Building                          | 99 BMA Dialysis Center                       |
| 4 Transportation Services                                  | 28 Delta Residence Hall 4          | 53 Luis Gonzalez Hitting Facility                   | 76 Chemistry Building                           | 100 Technology & Research Park               |
| 5 James A. and Frances H. Yance Football Practice Facility | 29 Delta Residence Hall 5          | 54 Jon Lieber Clubhouse                             | 77 MacQueen Alumni Center                       | 101 Health Sciences Building                 |
| 6 Jaguar Training Center                                   | 30 Delta Residence Hall 6          | 55 Stanky Field                                     | 78 Tolmin House (formerly Alumni Hall)          | 102 Health Simulation Building               |
| 7 Football Fieldhouse                                      | 31 Camellia Hall                   | 56 Softball/Soccer Fieldhouse                       | 79 Seamen's Bethel/Honors College               | 103 Alpha Hall East                          |
| 8 Hancock Whitney Stadium                                  | 32 Azalea Hall                     | 57 Softball Field (Jaguar Field)                    | 80 Mobile Townhouse                             | 104 Charles M. Baugh Biomedical Library      |
| 9 Athletics Administration Building                        | 33 Beta Apartment Residence Hall 1 | 58 Soccer Field (The Cage)                          | 81 Moulton Tower & Alumni Plaza                 | 105 Medical Sciences Building                |
| 10 Faculty Club  | 34 Beta Apartment Residence Hall 2 | 59 Farish Beard Indoor Practice Facility (Softball) | 82 Mitchell Center                              | 106 Central Services Admin Building          |
| 11 Outdoor Adventures                                      | 35 Beta Apartment Residence Hall 3 | 60 Marching Band Practice Field                     | 84 Lubel Memorial Tennis Courts                 | 107 Alpha Hall South                         |
| 12 Student Recreation Center                               | 36 Beta Apartment Residence Hall 4 | 61 Marching Band Practice Field Pavilion            | 85 Academic Services Center                     | 108 Visual Arts Complex                      |
| 13 Epsilon Residence Hall 1                                | 37 Beta Apartment Residence Hall 5 | 62 Jaguar Track                                     | 86 Health, Kinesiology & Sport Building/Jag Gym | 109 Glass Arts Building                      |
| 14 Epsilon Residence Hall 2                                | 38 Grounds Department              | 63 Athletics Annex                                  | 87 Student Health Center                        | 110 Life Sciences Lecture Hall               |
| 15 Dining Facility (Fresh Food Company)                    | 39 Treatment Storage & Disposal    | 64 Communication Building                           | 88 Computer Services Center                     | 111 Life Sciences Building                   |
| 16 Chi Omega Sorority House                                | 40 Property Inventory Warehouse    | 65 Science Laboratory Building                      | 89 Counseling and Testing                       | 112 Mathematical Sciences & Physics Building |
| 17 Phi Mu Sorority House                                   | 41 Kappa Sigma Chapter Room        | 66 Jag Fitness Trail                                | 90 Innovation in Learning Center                | 113 Whiddon Administration Building          |
| 18 Alpha Omicron Pi Sorority House                         | 42 Gamma Residence Hall 0          | 67 Archaeology Building                             | 91 Educational Services Building                | 114 Tholos of Delphi Replica                 |
| 19 Alpha Gamma Delta Sorority House                        | 43 Gamma Residence Hall 1          | 68 Archaeology Lab 1                                | 92 Bookstore                                    | 115 Laidlaw Performing Arts Center           |
| 20 Kappa Delta Sorority House                              | 44 Gamma Residence Hall 2          | 69 Archaeology Lab 2                                | 93 Student Center                               | 116 Mitchell College of Business             |
| 21 Pi Kappa Phi Fraternity House                           | 45 Gamma Residence Hall 3          | 70 Archaeology Storage                              | 94 Meisler Hall                                 | 117 Mitchell Learning Resource Center        |
| 22 Sigma Chi Fraternity House                              | 46 Gamma Residence Hall 4          | 71 Central Utilities Plant                          | 95 Marx Library                                 | 118 Shelby Hall                              |
| 23 Pi Kappa Alpha Fraternity House                         | 47 Gamma Residence Hall 5          | 72 Telecommunications Building                      | 96 Laboratory of Infectious Diseases            | 119 University Commons                       |
| 24 Kappa Alpha Fraternity House                            | 48 Gamma Residence Hall 6          |   |   |  |



**DELISA JOHNSON**  
Director



**MARISSA MCCRANEY**  
Coordinator

**OFFICE OF PROSPECTIVE STUDENT PROGRAMS &  
NEW STUDENT ORIENTATION**

University of South Alabama  
Mobile Townhouse  
5910 USA South Drive  
Mobile, AL 36608  
Ph: (251) 460-7093  
Fax: (251) 460-6540  
[southbound@southalabama.edu](mailto:southbound@southalabama.edu)