

GY360 Structural Geology

Structure Contour Strike and Dip Example Problem

Given the attached structure contour map of a hypothetical water table surface, calculate the average strike and dip of the surface from points (A) and (B) on the map. To begin solving the problem, first draw a line from point (A) to point (B) and assume that this is a direction that is perpendicular to the structure contour passing through point (A). Report the strike and the dip of the water table in the upper left-hand portion of the map. Check your graphical result using trigonometry.

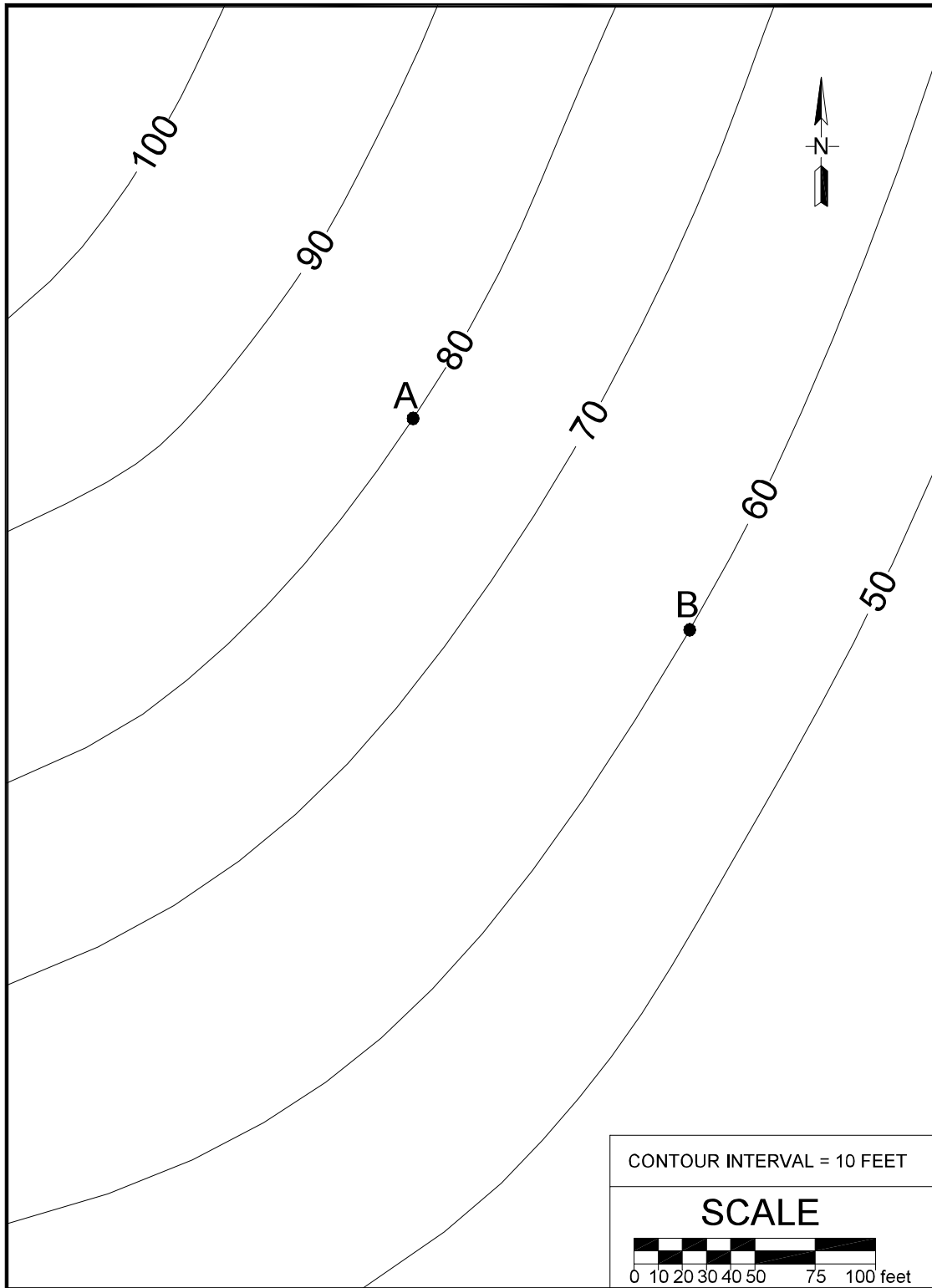


Figure 1-1: Map for calculating strike and dip from structure contours.