

We
CAN
relieve
Your
mailing
HEAD-
ACHES
and **lower**
the **COST** of
postage!

PUBLICATION
SERVICES
251.380.2828

DID YOU KNOW...

In 1775 Benjamin Franklin was appointed the first Postmaster General by the Continental Congress and has been credited with establishing the foundation for many of the systems still in place today.

The Postal Service processes and delivers more than 212 billion pieces of mail each year; which equates to 700 million pieces per day; 29 million pieces per hour; 486,000 pieces per minute; 8,000 pieces per second.

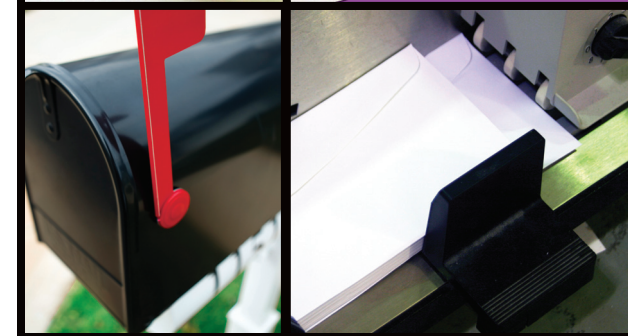
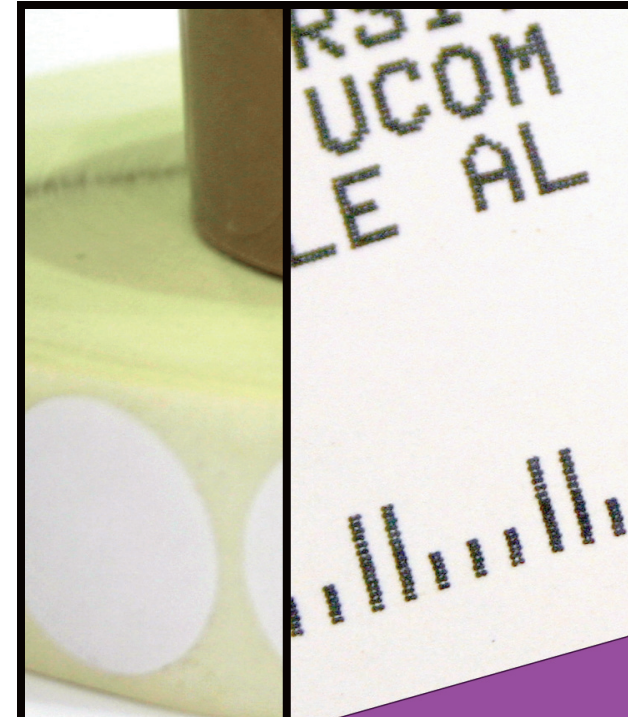
A Postmaster delivered mail to Revolutionary War soldiers on foot because he lacked the money to buy a horse.

Rural carriers once picked up and delivered groceries for customers along their routes.

OUR MISSION STATEMENT Publication Services is charged with the responsibility of providing the University community (students, faculty, and staff) with a high-quality, cost efficient print management service.



University of South Alabama
Publication Services
6500 UCOM
307 N. University Blvd.
Mobile, AL 36688-0002



PS NEWS

VOLUME 23
WINTER
2009



UNIVERSITY OF SOUTH ALABAMA
PUBLICATION SERVICES

www.southalabama.edu/publications 251.380.2828

SMARTMAIL

In America, there are over 149 million addresses and approximately 45 million Americans move each year.

records with customer-filed change-of-address orders.

There is a minimum charge of \$0.42 for each piece returned by the post office as undeliverable as addressed (UAA). Mailing lists should be updated often to eliminate extra charges being assessed and charged to you.

Publication Services is always working to stay abreast of changes in mailing requirements to serve you better. If you have any questions about the above information, please call 380-2828.

November 23, 2008, the Postal Service implemented a requirement (**MOVE UPDATE**) for all discount mailings. **MOVE UPDATE** requires that all addresses used in a bulk mailing be verified within 95 days prior to a mailing OR that a return service endorsement be placed on the outside of the mailing.

Publication Services has the capability to verify names and addresses within your database — checking it against the National Change of Address (NCOA) link. This will help reduce the number of mail pieces that are forwarded or returned by matching a mailer's address

GOT *mailing* QUESTIONS?

We've got answers!

Publication Services strives to deliver professional, quality printing to the University community. Each project is handled in an efficient and accurate manner in the time frame required.

Our dedicated team combines experience, knowledge, and flexibility to carry out all phases of your project including design, printing, binding and mailing. Staff members are consistently up-to-date on ever changing postal regulations to provide cost-efficient mailings.

Publication Services is committed to working with you, the University community, to insure that the University of South Alabama is portrayed in a professional and consistent manner.

This issue of P.S. News is printed on white 80# enamel cover. Font families used are CENTURY GOTHIC and RAGE ITALIC. Variable Data was used to process this mailing.

U.S. POST OFFICE

E S E K Z I J G Y R R W C A E
 L E S M I O A T E E K O D X N
 B G U G P O I D T N M V L Z V
 A A B X N R S S D M E E A S E
 R K B U O I A E U R T R T P L
 E C A I L M L N T T E A A A O
 V A R V T K I I E U M S R L P
 I P C S N T S R A P O U S W E
 L G O R Y E S R S M R R K E S
 E P D T M S R E M O T S U C S
 D E E E P O S T A G E O Y S S
 N Y N G O V E R N M E N T B C
 U T E V I T A R O M E M M O C
 S S E R P X E I N D I C I A S
 S S M C A R D S W S R E T E M

ADDRESSES
 BULK
 COMMUNITY
 EXPRESS
 INDICIA
 METERS
 POSTMASTER
 RURAL
 ZIP

ADVERTISEMENTS
 CARDS
 CUSTOMERS
 GENERAL
 LETTERS
 PACKAGES
 PRIORITY
 STAMPS

BARCODE
 COMMEMORATIVE
 ENVELOPES
 GOVERNMENT
 MAILINGS
 POSTAGE
 ROUTES
 UNDELIVERABLE

PUBLICATION SERVICES ON THE WEB:

www.southalabama.edu/publications/

Visit us on the web to see more about the services we offer.

Design • Printing

Mailing • Binding

Large Formats

Mounting • Laminating

Logo and Symbol Usage

Signs • Name Tags

Desk Plates • Plaques

