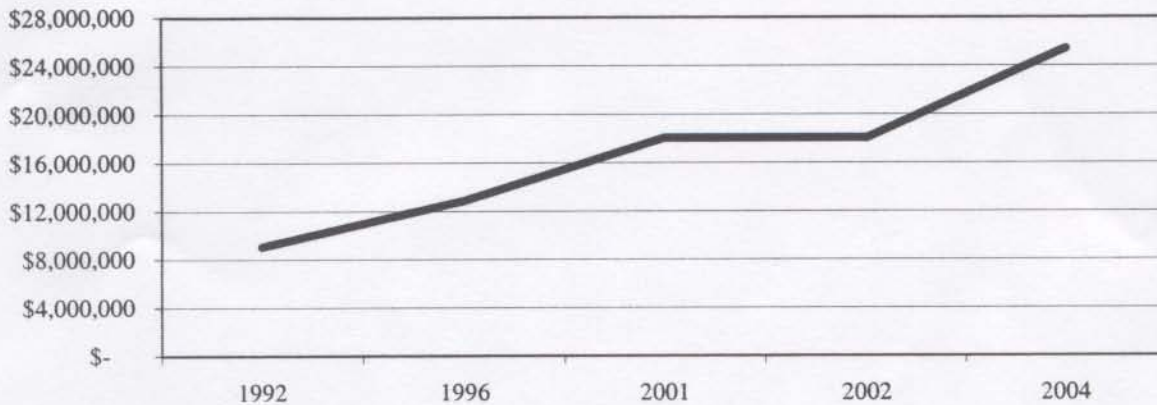


U. S. A. Health Plan

2 Health Plan Costs

	1992	1996	2001	2002	2,003	2004
Total health care costs (in thousands)	\$ 9,055	\$ 12,873	\$ 18,068	\$ 18,034	\$ 21,682	\$ 25,427
Pharmacy costs (prescriptions) (in thousands)	\$ 760	\$ 1,580	\$ 3,936	\$ 3,412	\$ 3,640	\$ 4,268

**USA Health Plan Total Costs
1992-2002**



**USA Health Plan Prescription Costs
1992-2004**

