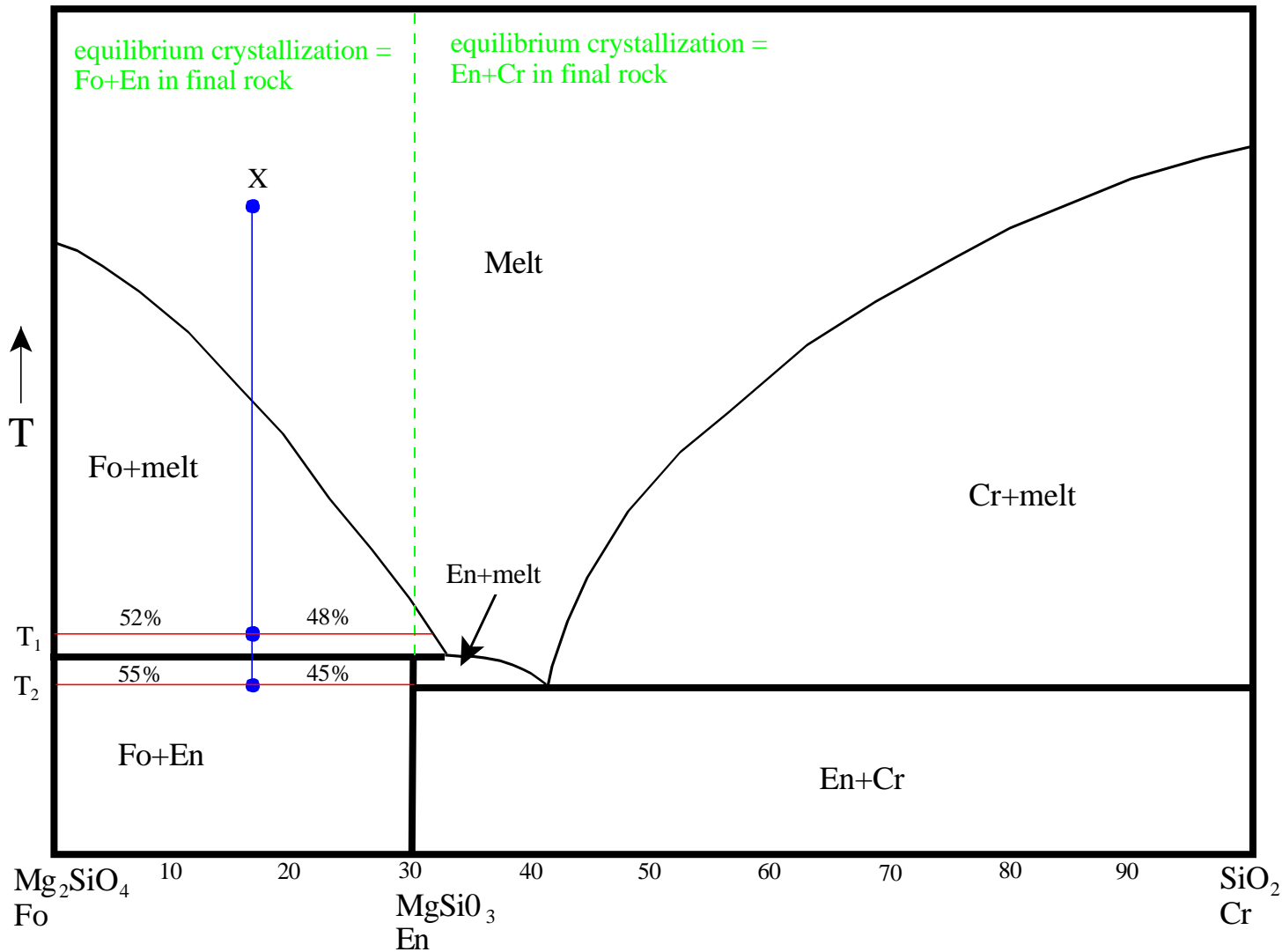


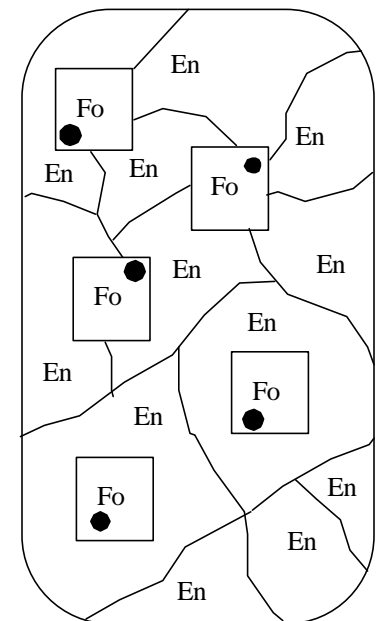
Binary Peritectic Phase Diagram



Equilibrium crystallization of composition X

T₁: %Solid = 48 (pure Fo)
%Melt = 52
(32% SiO₂+68% Mg₂SiO₄)

T₂: %Solid = 100
(45% Fo+55% En)



Groundmass composition =
100% En (55% of chamber)

Phenocryst composition =
100% Fo (45% of chamber)

● Replacement of Fo by
En