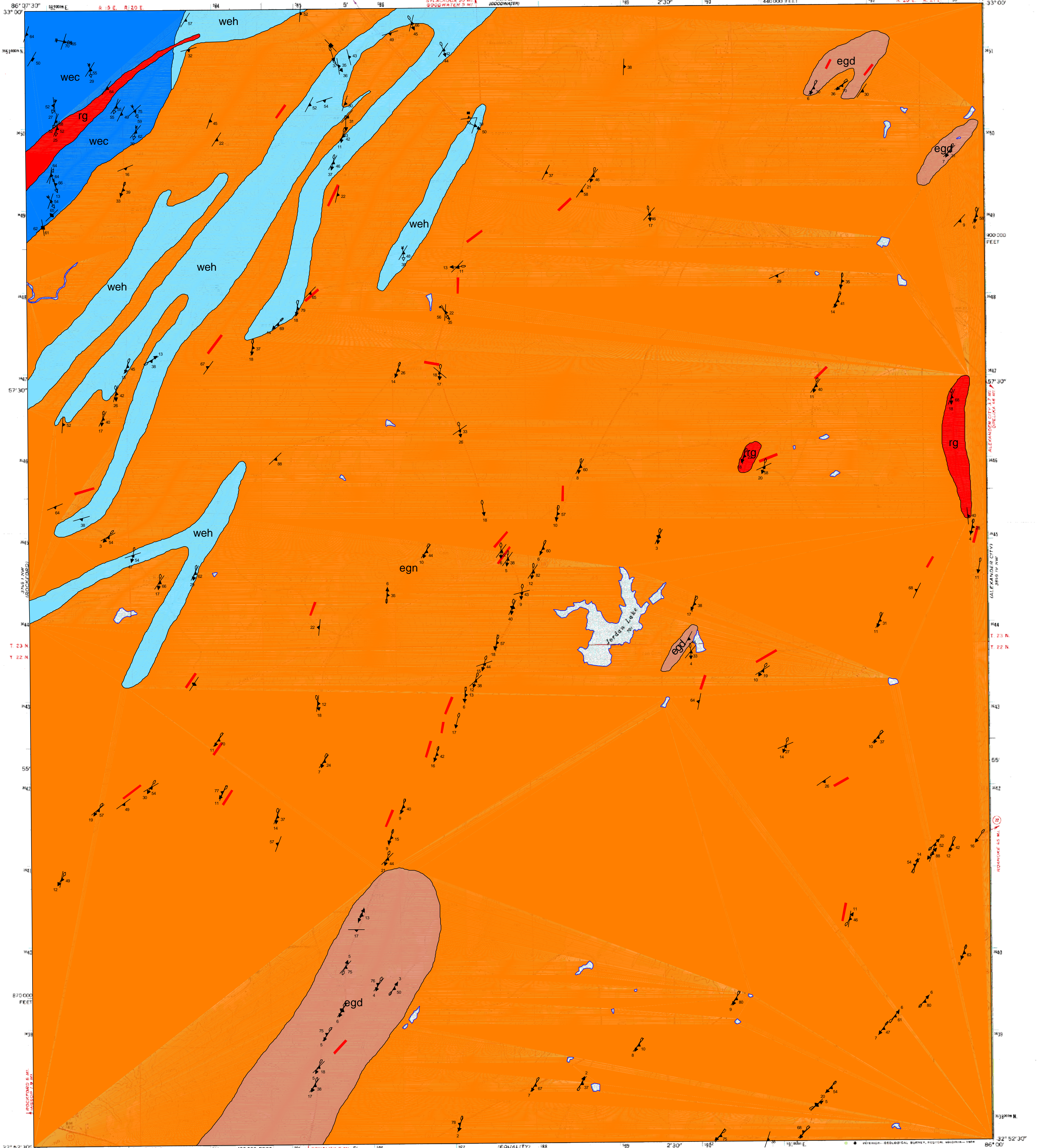
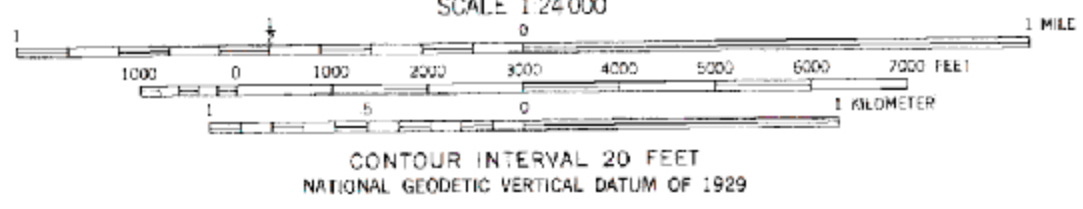
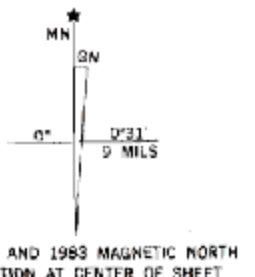


UNITED STATES
DEPARTMENT OF THE INTERIOR
GEOLOGICAL SURVEY

KELLYTON QUADRANGLE
ALABAMA
7.5 MINUTE SERIES (TOPOGRAPHIC)



Mapped, edited, and published by the Geological Survey
Control by USGS and NOS/NOAA
Topography by photogrammetric methods from aerial
photographs taken 1969. Field checked 1971
Polyconic projection. 10,000-foot grid ticks based on
Alabama coordinate system, and zone. 1000-meter Universal
Transverse Mercator grid ticks, zone 16, shown in blue
1927 North American Datum
To place on the predicted North American Datum 1983
move the projection lines 20 meters south and 4 meters west
as shown by dashed corner ticks
Fine red dashed lines indicate selected fences and field lines where
generally visible on aerial photographs. This information is unchecked
Revisions shown in purple and woodland compiled from
aerial photographs taken 1953 and other sources
This information not field checked. Map edited 1983



CONTOUR INTERVAL 20 FEET
NATIONAL GEODETIC VERTICAL DATUM OF 1929



ROAD CLASSIFICATION

Primary highway, hard surface	Light-duty road, hard or improved surface
Secondary highway, hard surface	Unimproved road
Interstate Route	U. S. Route
	State Route

KELLYTON, ALA.
32086 H1-TF-024
1971
PHOTOREVISED 1983
DMA 3749 1 NE-SERIES V844

THIS MAP COMPLIES WITH NATIONAL MAP ACCURACY STANDARDS
FOR SALE BY U. S. GEOLOGICAL SURVEY, RESTON, VIRGINIA 22092
A FOLDER DESCRIBING TOPOGRAPHIC MAPS AND SYMBOLS IS AVAILABLE ON REQUEST